

**Cambria Community Service District
Adaptive Management Plan
Biological Bi-Monthly Monitoring Report**



Prepared by

Cleveland Biological, LLC
cindycleve@gmail.com
805.234.3759


August 4, 2022

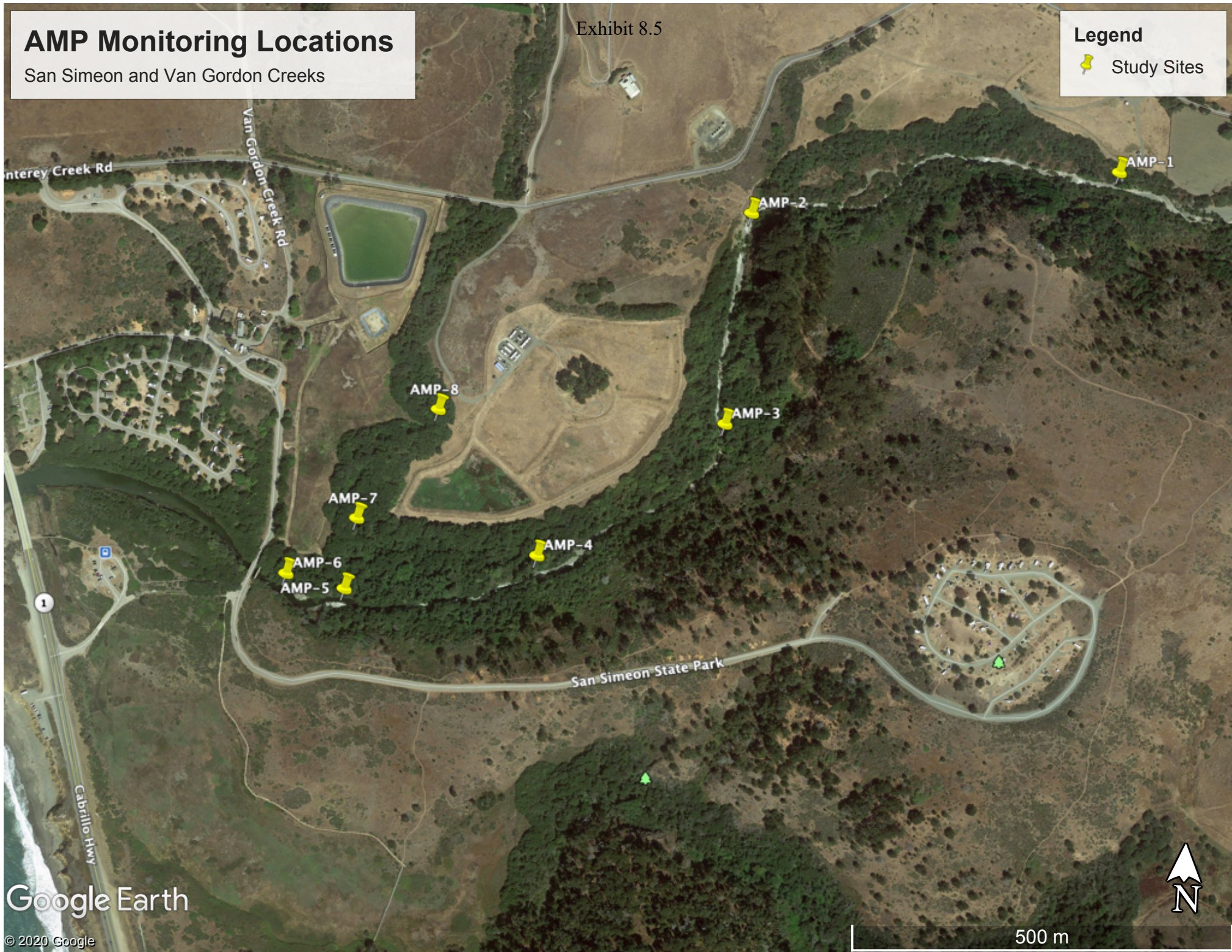
AMP Monitoring Locations

San Simeon and Van Gordon Creeks

Exhibit 8.5

Legend

 Study Sites



Google Earth

© 2020 Google

500 m

Exhibit 8.5

Cleveland Biological, LLC		CCSD AMP Biological Monitoring in San Simeon and Van Gordon Creeks							
Cindy & Paul Cleveland									
Survey Date: 8-4-2022	High Tide: 5.01 ft @ 3:50 PM	Low Tide: 1.58 ft @ 8:53 AM			Sandbar Breached: No		Stage (718): 2.04		
Location	<u>Site 1</u>	<u>Site 2</u>	<u>Site 3</u>	<u>Site 4</u>	<u>Site 5</u>	<u>Site 7*</u>	<u>Site 8</u>		
Time	1:45 PM	1:16 PM	12:48 PM	12:33 PM	12:05 PM	11:37 AM	11:11 AM		
Weather (°F, Cloud cover)	76, Cloudy	74, Cloudy	64, Cloudy	70, Clearing	68, Fog	68, Fog	62, Fog		
Habitat									
Stream type (run, riffle, pool)	Pool	Riffle	Run	Run	Run	Run	Riffle		
Instream cover type (lwd,swd,etc)	swd	riparian veg	none	swd	riparian veg	none	none		
Substrate type (cobble, gravel, silt)	c, s	c, g	c, g	c, g	s, c	c	c		
Substrate embededness (%)	75	50	50	100	100	100	75		
Algae Surface (%)	0	0	100	0	5	0	0		
Algae Subsurface (%)	75	75	100	75	75	0	0		
Vegetation									
Instream cover (%)	0	0	0	10	10	0	0		
Overhead cover (%)	10	0	10	30	10	80	80		
Riparian width-Rt Bank (ft)	150	35	210	135	25	30	30		
Riparian width-Lt Bank (ft)	100	10	8.6	230	85	85	55		
Riparian Moisture-Rt Bank (%)	7.6	0.8	24.1	7.8	8.0	14.5	10.6		
Riparian Moisture-Lt Bank (%)	0.0	0.0	0.0	22.0	20.7	20.7	12.8		
Hydrology									
Maximum depth (ft)	dry	dry	dry	0.7	1.7	dry	dry		
Wetted width (ft)	dry	dry	dry	13.0	22.5	dry	dry		
Flow = Area x Rate (cfs)	dry	dry	dry	0.3	1.8	dry	dry		
Hydrology Calculations									
Depth 1 @ 1/4 (ft)	dry	dry	dry	0.5	0.6	dry	dry		
Depth 2 @ 1/2 (ft)	dry	dry	dry	0.6	1.0	dry	dry		
Depth 3 @ 3/4 (ft)	dry	dry	dry	0.5	1.6	dry	dry		
Average Depth = total/4 (ft)	dry	dry	dry	0.4	0.8	dry	dry		
Area = Width x Avg Depth (ft^2)	dry	dry	dry	5.2	18.0	dry	dry		
Rate from meter (ft/sec)	dry	dry	dry	0.05	0.1	dry	dry		

Exhibit 8.5

	<u>Site 1</u>	<u>Site 2</u>	<u>Site 3</u>	<u>Site 4</u>	<u>Site 5</u>	<u>Site 7*</u>	<u>Site 8</u>
Water Quality							
Temperature (F)	dry	dry	dry	61.9	63.1	dry	dry
Dissolved Oxygen (%)	dry	dry	dry	47.3	75.7	dry	dry
Dissolved Oxygen (ppm)	dry	dry	dry	4.6	7.25	dry	dry
Total Dissolved Solids (mg/L)	dry	dry	dry	709	828	dry	dry
Salinity (ppt)	dry	dry	dry	0.54	0.64	dry	dry
Water Guage							
Water Level (ft)				na	na		
Site 4 guage is in pool approx.50 m upstream of Site 4 near right bank. Site 5 guage is at site on left bank.							
Species Observed	One Western pond turtle observed downstream of Site 5. Stickleback @ Sites 4 & 5.						
Comments							
Location Descriptions	Trail by SS-1	Downstream of rock pool	Draw a line from 9P7 along road to the creek	Stream flow starts/ends	Upstream of Van Gordon confluence	Van Gordon accessed at MW-4	Van Gordon accessed from AWTP
GPS	35°36'0.23"N	35°35'57.55"N	35°35'48.09"N	35°35'41.88"N	35°35'40.00"N	35°35'43.10"N	35°35'48.06"N
	121° 6'33.42"W	121° 6'53.39"W	121° 6'54.29"W	121° 7'4.04"W	121° 7'14.25"W	121° 7'13.85"W	121° 7'9.81"W
*Site 6 is on State Parks property and is not accessible at this time.							
9P7 Soil Moisture †							
North (%)	3.9						
East (%)	0.0						
South (%)	0.0						
West (%)	0.0						
†Moisture measured on each side of well casing. Max reading is 50%.							

CCSD Monitoring August 4, 2022

Exhibit 85



Site 1



Site 1



Site 1



Site 1

CCSD Monitoring August 4, 2022

Exhibit 85



Site 2



Site 2



Site 2



Site 2

CCSD Monitoring August 4, 2022

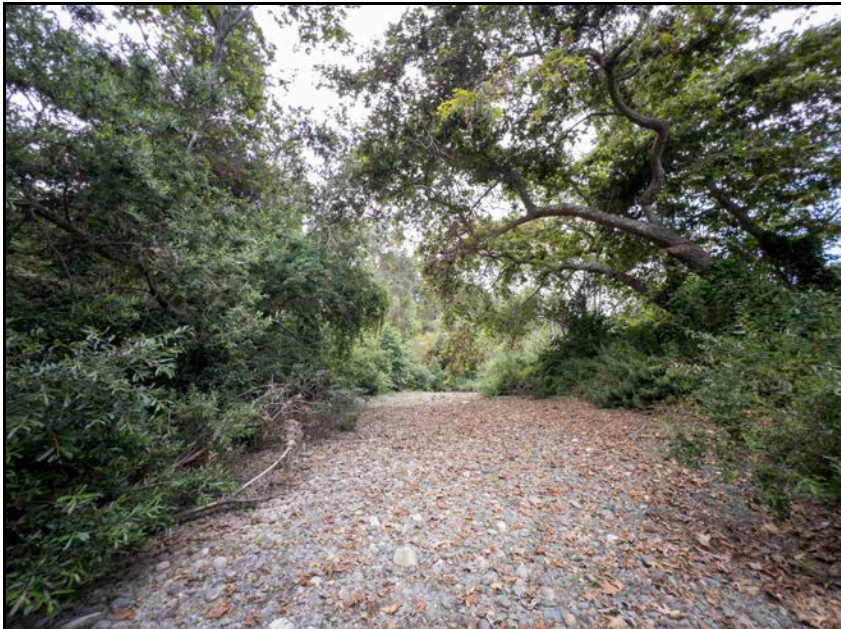
Exhibit 85



Site 3



Site 3



Site 3



Site 3

CCSD Monitoring August 4, 2022

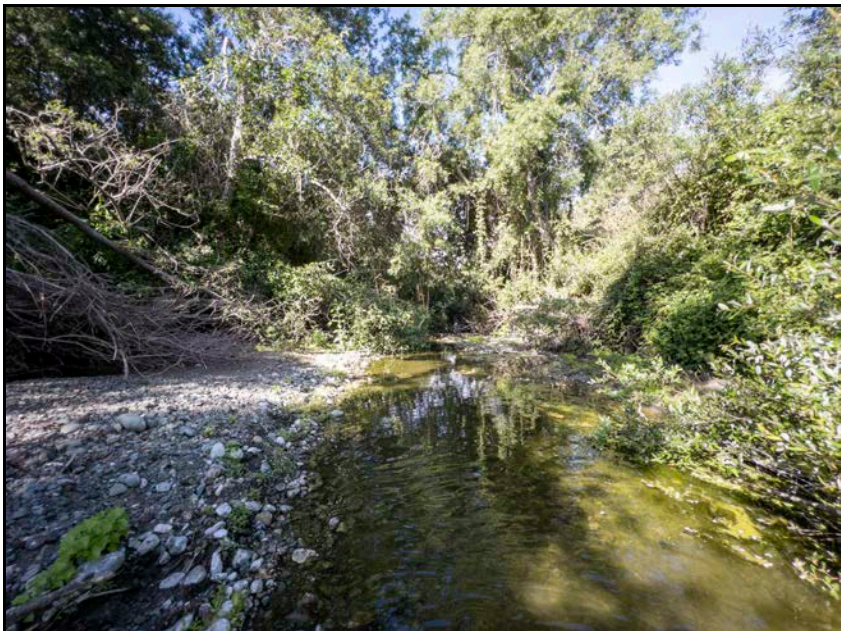
Exhibit 85



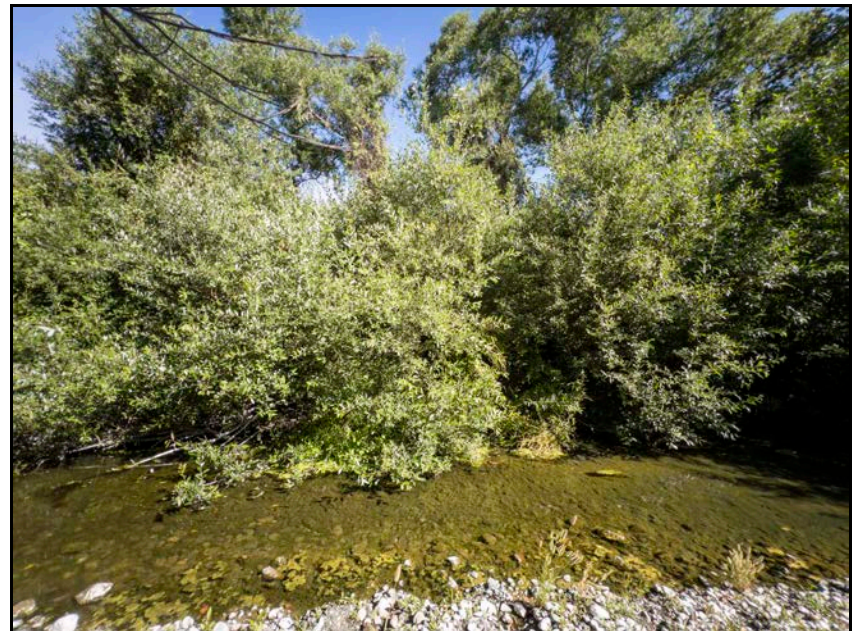
Site 4



Site 4



Site 4



Site 4

CCSD Monitoring August 4, 2022

Exhibit 85



Site 5



Site 5



Site 5



Site 5

CCSD Monitoring August 4, 2022

Exhibit 85



Site 7



Site 7



Site 7



Site 7

CCSD Monitoring August 4, 2022

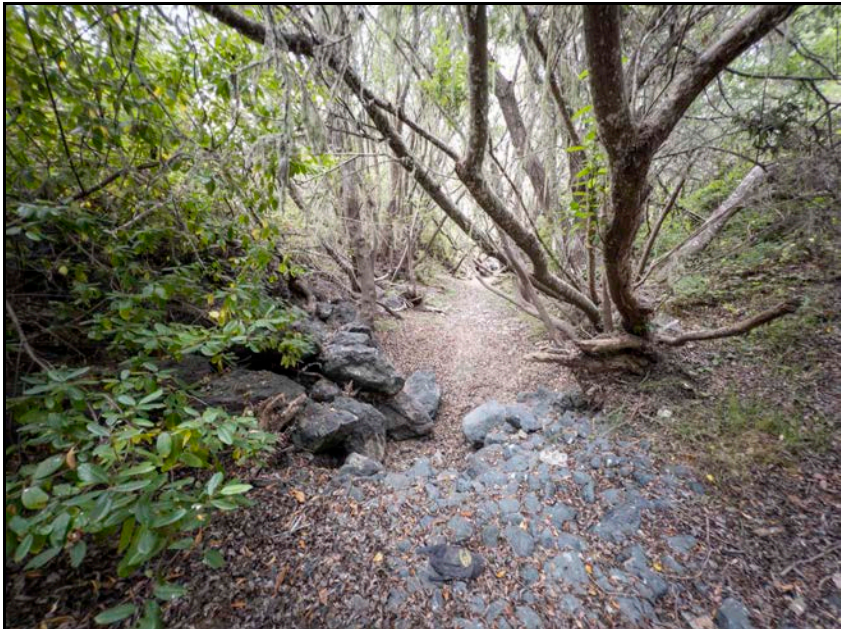
Exhibit 8/5



Site 8



Site 8



Site 8



Site 8

CCSD Monitoring August 4, 2022

Exhibit 85



9P7 Well



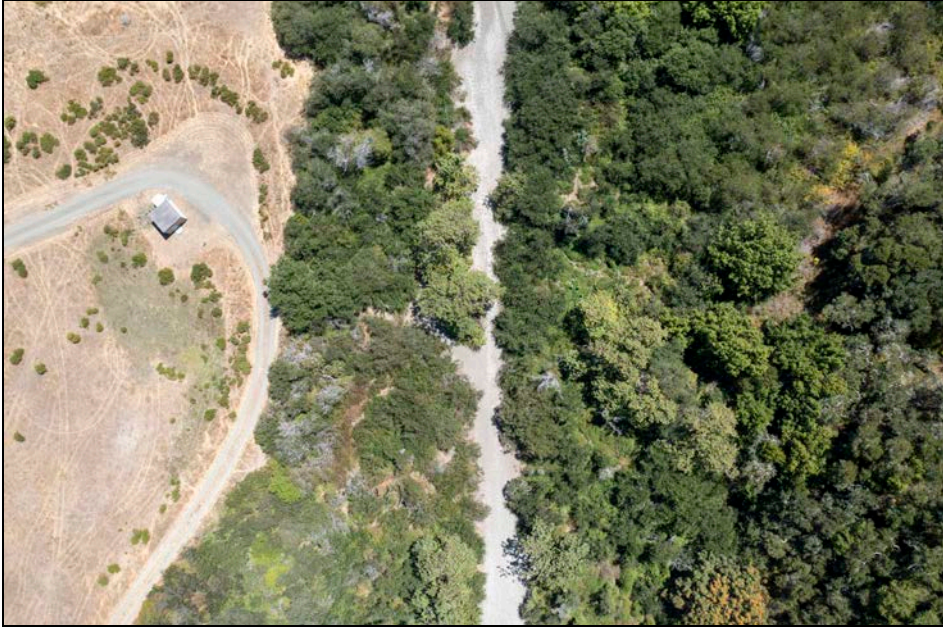
Walking Bridge PS-1



Estuary PS-2

CCSD Monitoring August 4, 2022

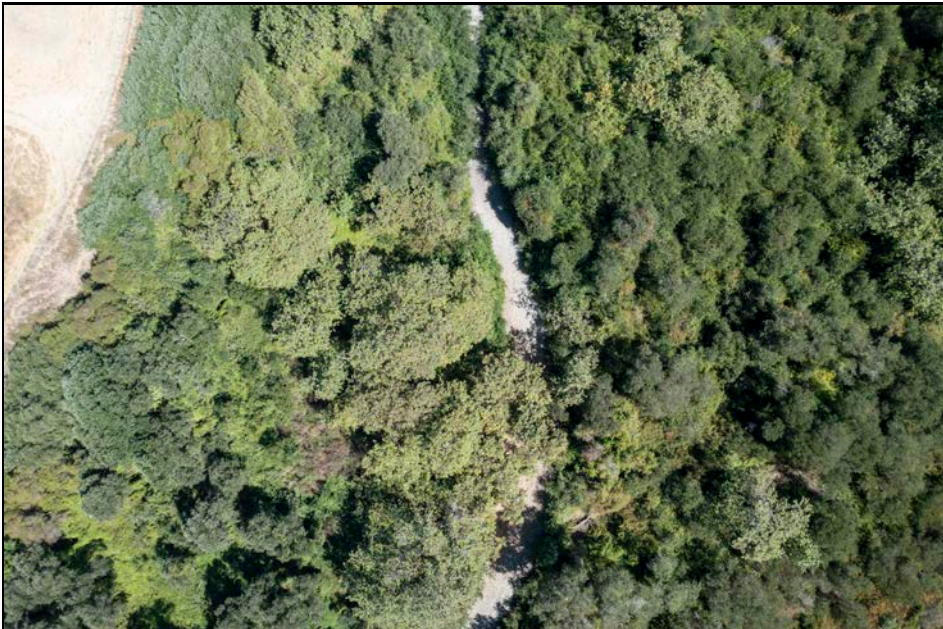
Exhibit 85



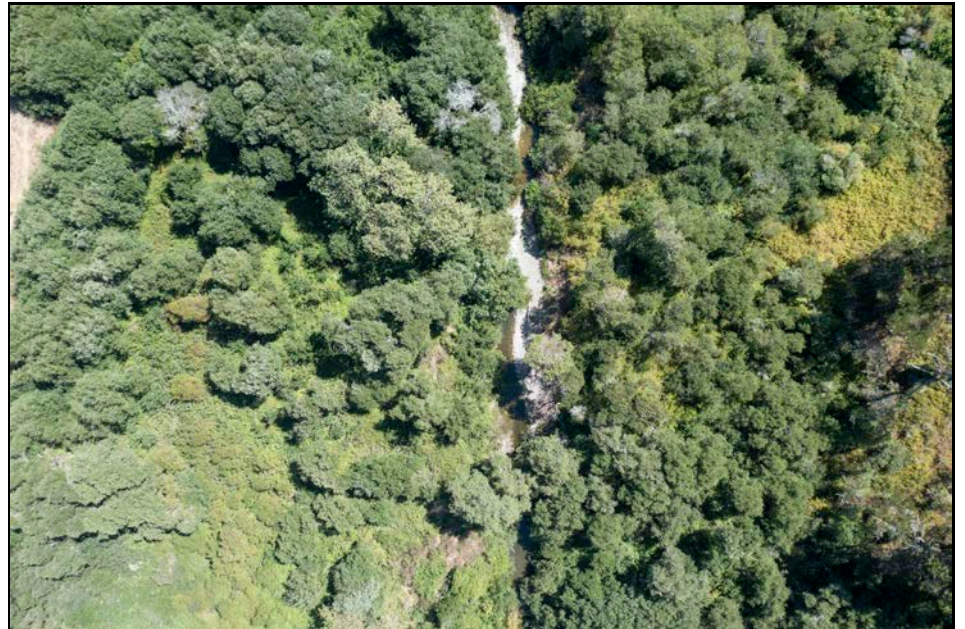
Site 1 Aerial



Site 2 Aerial



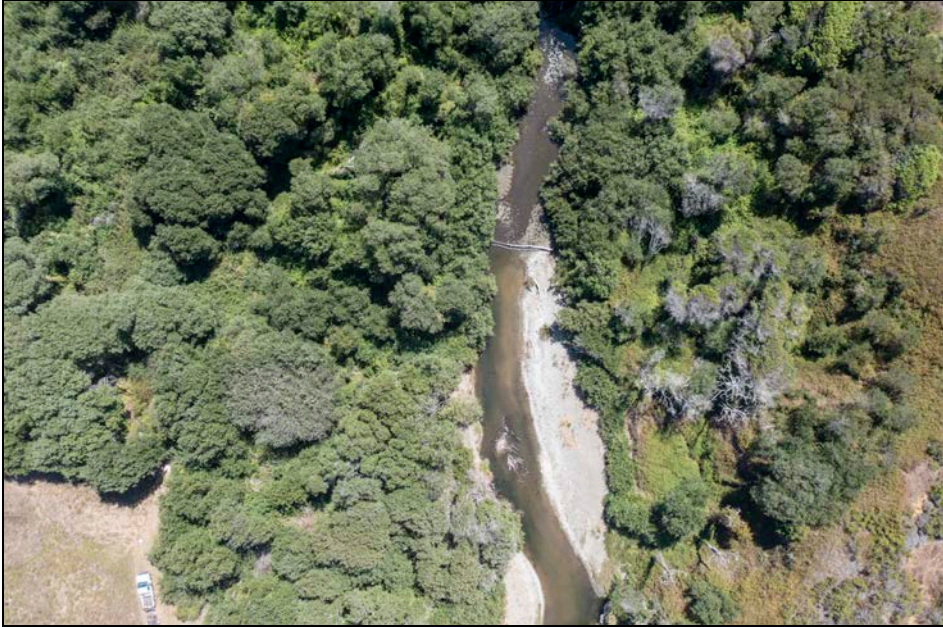
Site 3 Aerial



Site 4 Aerial

CCSD Monitoring August 4, 2022

Exhibit 85



Site 5 Aerial



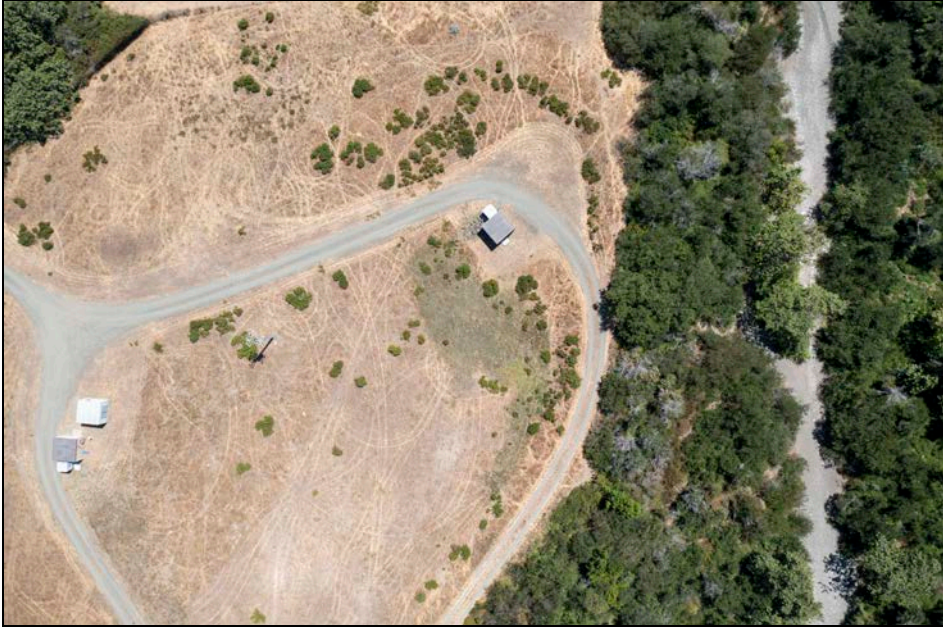
Site 7 Aerial



Site 8 Aerial

CCSD Monitoring August 4, 2022

Exhibit 85



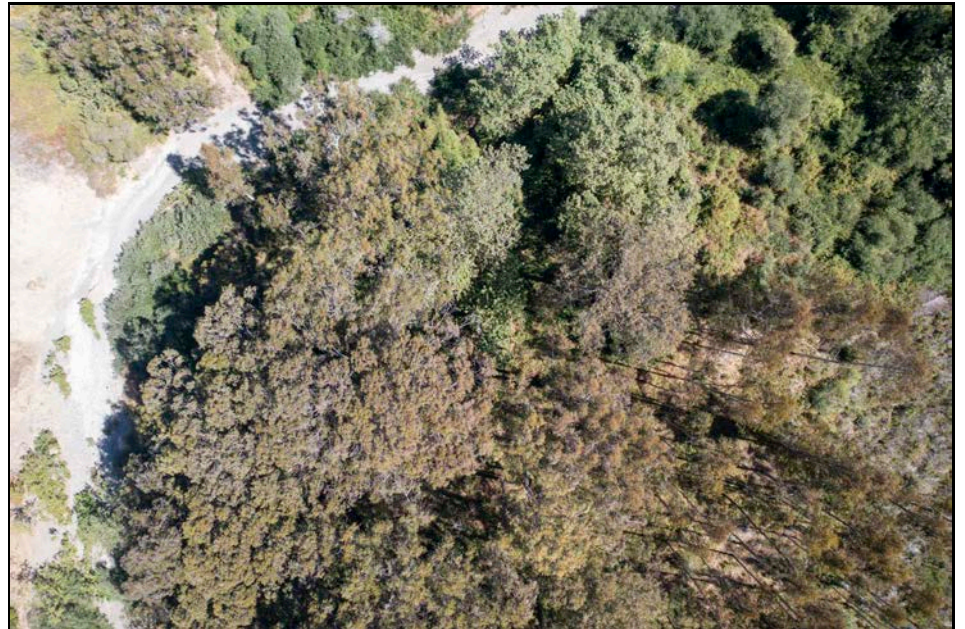
Site 1 Riparian Left



Site 1 Riparian Right



Site 2 Riparian Left



Site 2 Riparian Right

CCSD Monitoring August 4, 2022

Exhibit 85



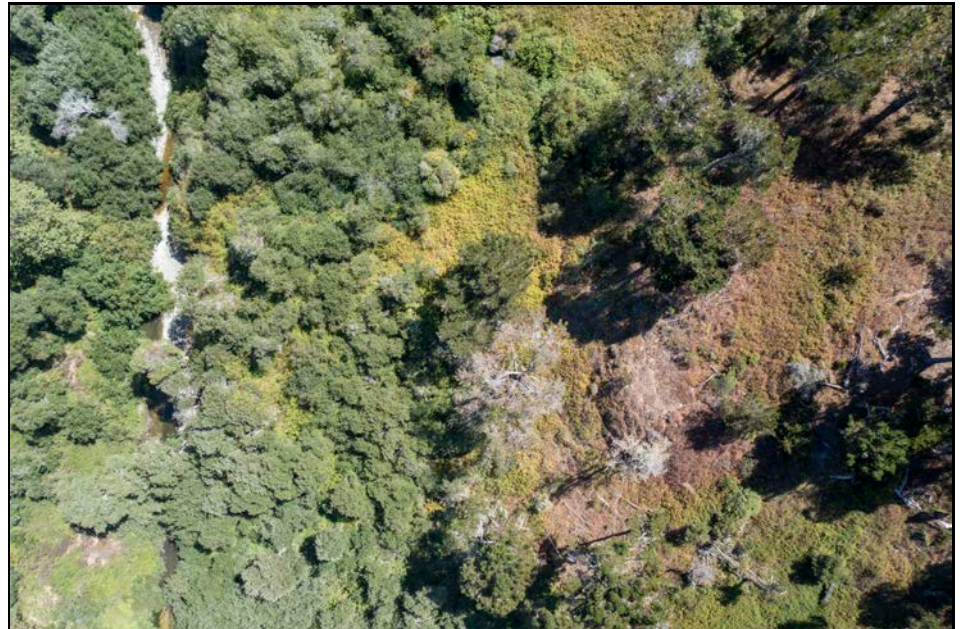
Site 3 Riparian Left



Site 3 Riparian Right



Site 4 Riparian Left



Site 4 Riparian Right

CCSD Monitoring August 4, 2022

Exhibit 85



Site 5 Riparian Left



Site 5 Riparian Right



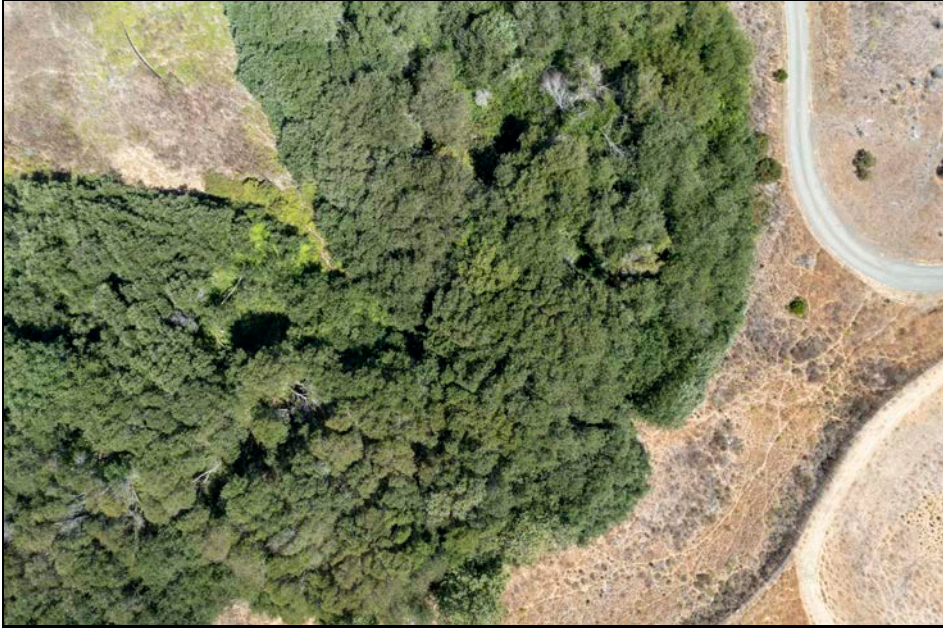
Site 7 Riparian Left



Site 7 Riparian Right

CCSD Monitoring August 4, 2022

Exhibit 85



Site 8 Riparian Left & Right