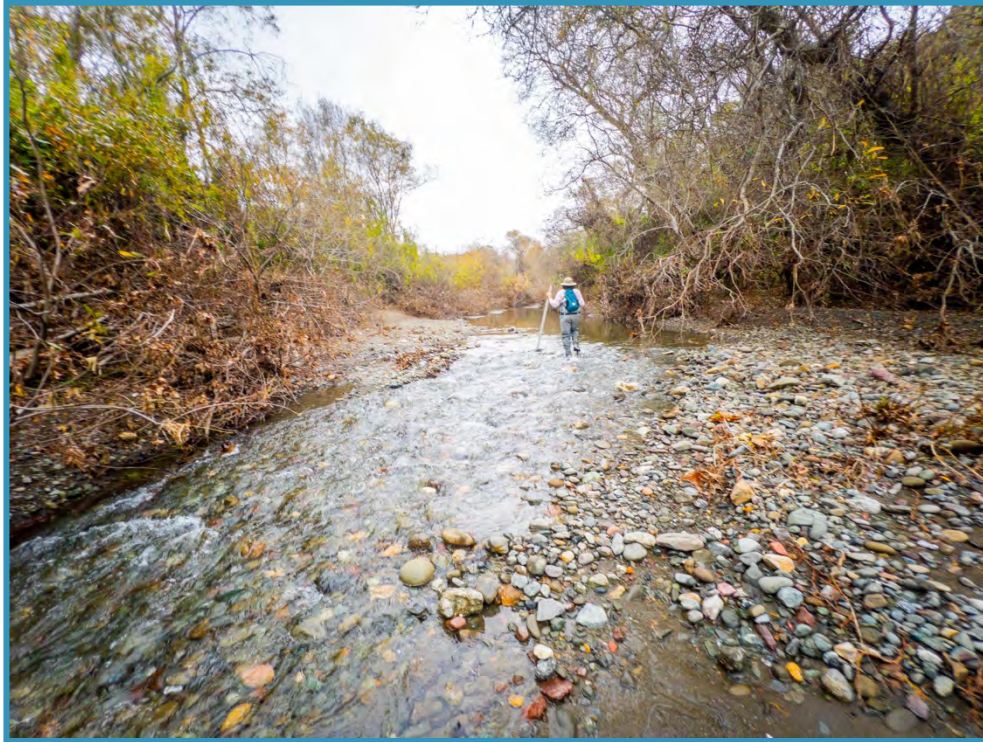


**Cambria Community Service District
Adaptive Management Plan
Biological Bi-Monthly Monitoring Report**



Prepared by

Cleveland Biological, LLC
cindycleve@gmail.com
805.234.3759

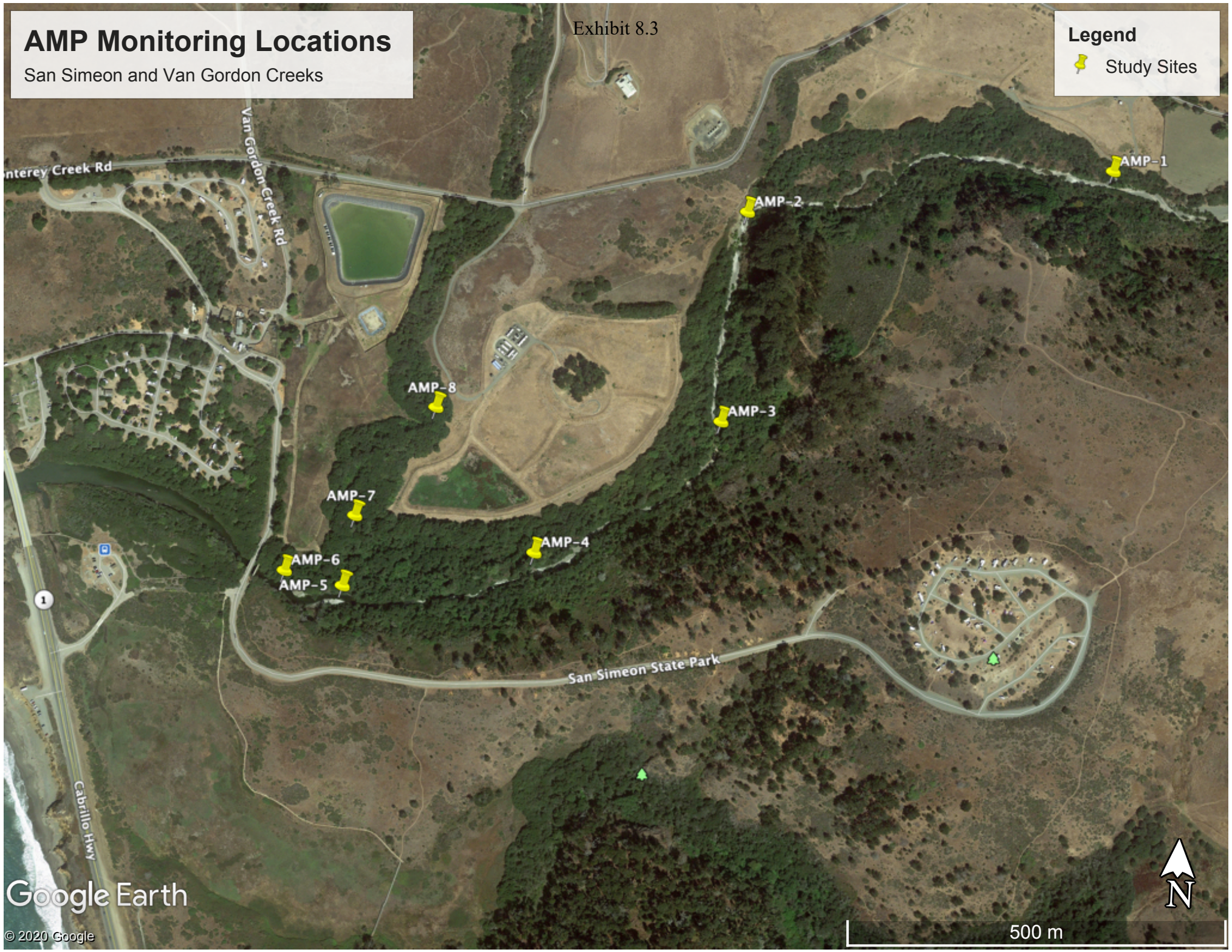
February 14, 2022

AMP Monitoring Locations

San Simeon and Van Gordon Creeks

Exhibit 8.3

Legend
📌 Study Sites



Google Earth

© 2020 Google

500 m

Exhibit 8.3

	Site 1	Site 2	Site 3	Site 4	Site 5	Site 7*	Site 8
Water Quality							
Temperature (F)	61	58.2	58.3	57.4	57.6	dry	dry
Dissolved Oxygen (%)	134.3	107.9	105.9	101.9	86.4	dry	dry
Dissolved Oxygen (ppm)	13.2	10.97	10.75	10.46	8.83	dry	dry
Total Dissolved Solids (mg/L)	385	391	404	562	647	dry	dry
Salinity (ppt)	0.29	0.29	0.30	0.43	0.49	dry	dry
Water Guage							
Water Level (ft)				na	na		
Site 4 guage is in pool approx.50 m upstream of Site 4 near right bank. Site 5 guage is at site on left bank.							
Species Observed	Only a few Stickleback below Site 4 and one likely Prickly sculpin below Site 2.						
Comments	The rain and high flows caused several changes - the deepest pool above Site 4 has filled into a run. The large tree that fell at Site 4 is gone, and both stream gauges at Sites 4 and 5 are gone. Between 12/13/21 and 12/29/21 there was 8.07 inches of rainfall recorded.						
Location Descriptions	Trail by SS-1	Downstream of rock pool	Draw a line from 9P7 along road to the creek	Stream flow starts/ends	Upstream of Van Gordon confluence	Van Gordon accessed at MW-4	Van Gordon accessed from AWTP
GPS	35°36'0.23"N	35°35'57.55"N	35°35'48.09"N	35°35'41.88"N	35°35'40.00"N	35°35'43.10"N	35°35'48.06"N
	121° 6'33.42"W	121° 6'53.39"W	121° 6'54.29"W	121° 7'4.04"W	121° 7'14.25"W	121° 7'13.85"W	121° 7'9.81"W
*Site 6 is on State Parks property and is not accessible at this time.							
9P7 Soil Moisture †							
North (%)	10.4						
East (%)	7.4						
South (%)	7.8						
West (%)	9.0						
†Moisture measured on each side of well casing. Max reading is 50%.							

CCSD Monitoring February 14, 2022

Exhibit 8



Site 1



Site 1



Site 1



Site 1

CCSD Monitoring February 14, 2022

Exhibit 8



Site 2



Site 2



Site 2



Site 2

CCSD Monitoring February 14, 2022

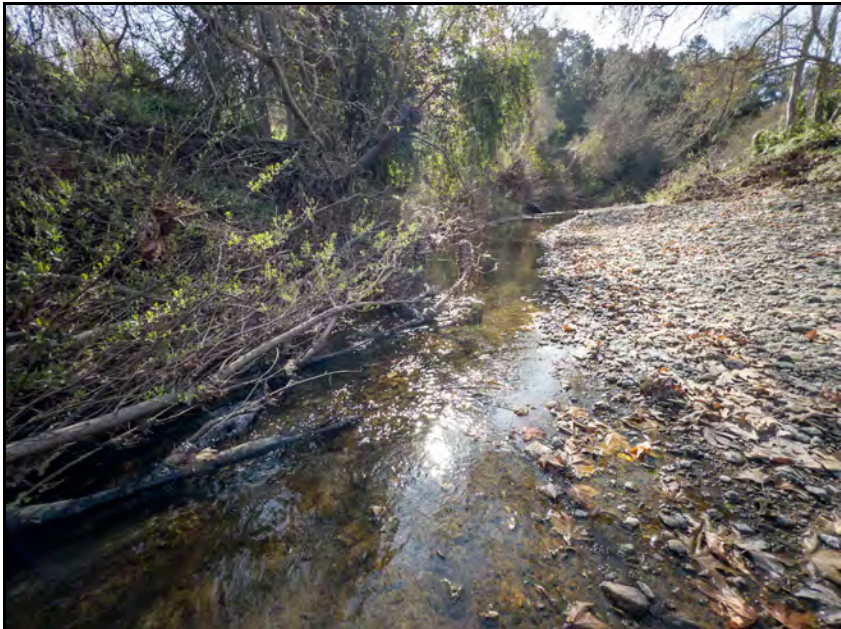
Exhibit 8.8



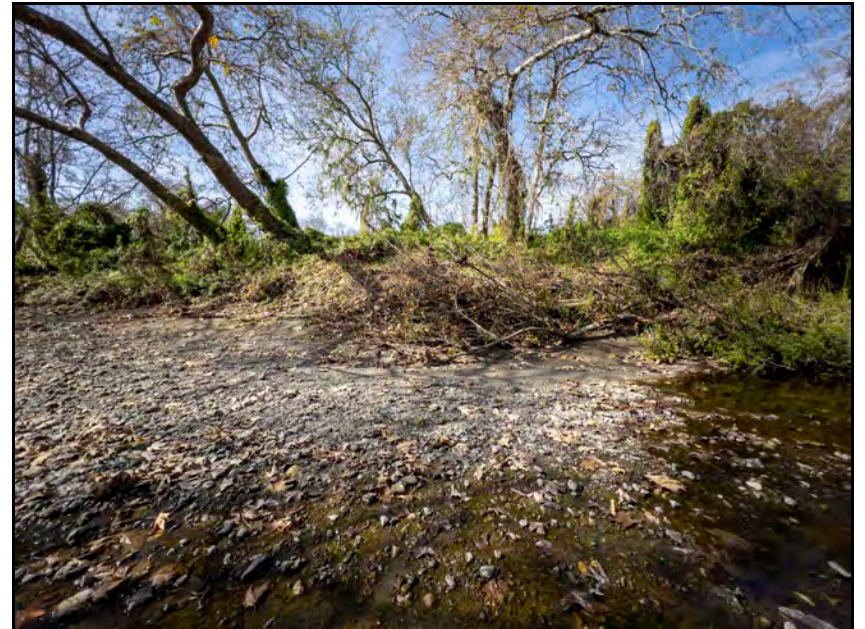
Site 3



Site 3



Site 3



Site 3

CCSD Monitoring February 14, 2022

Exhibit 8



Site 4



Site 4



Site 4



Site 4

CCSD Monitoring February 14, 2022

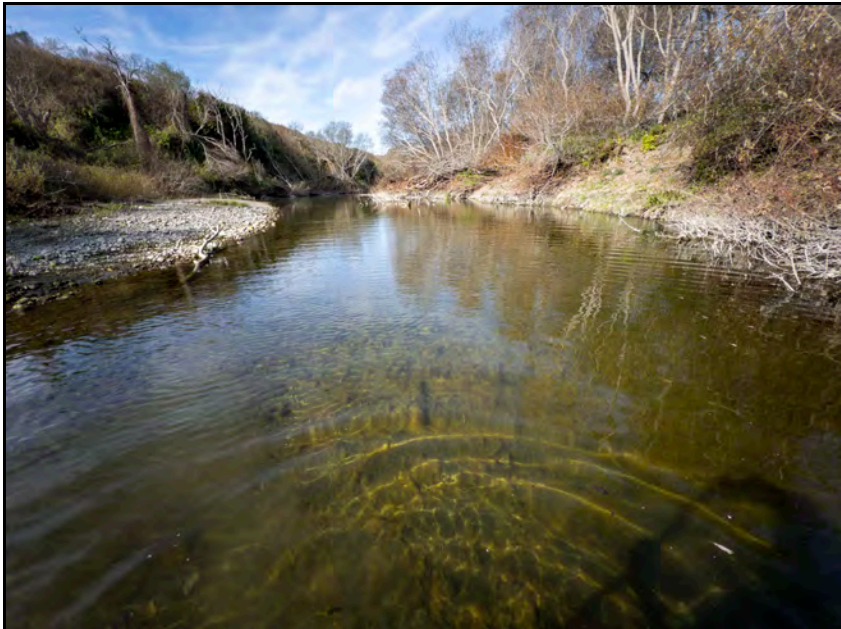
Exhibit 8.8



Site 5



Site 5



Site 5



Site 5

CCSD Monitoring February 14, 2022

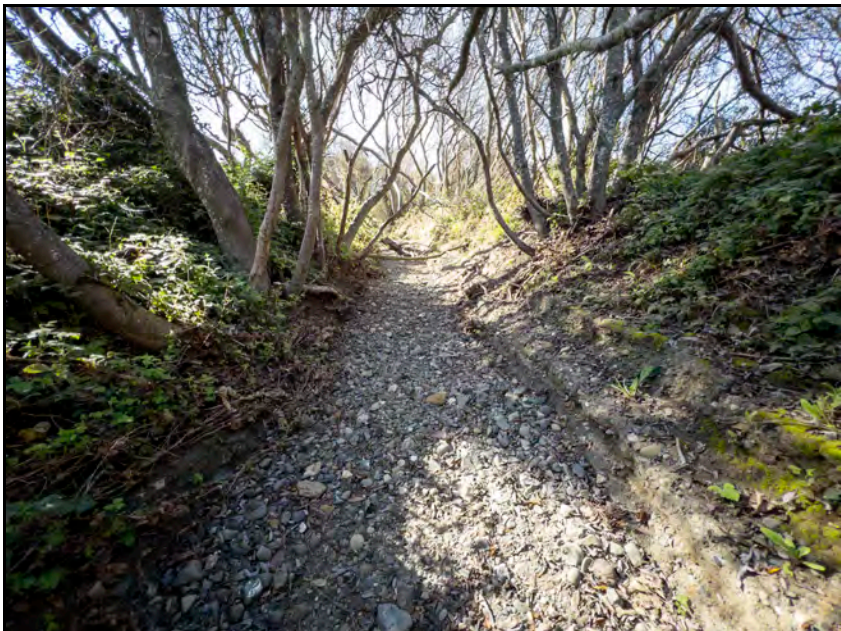
Exhibit 8



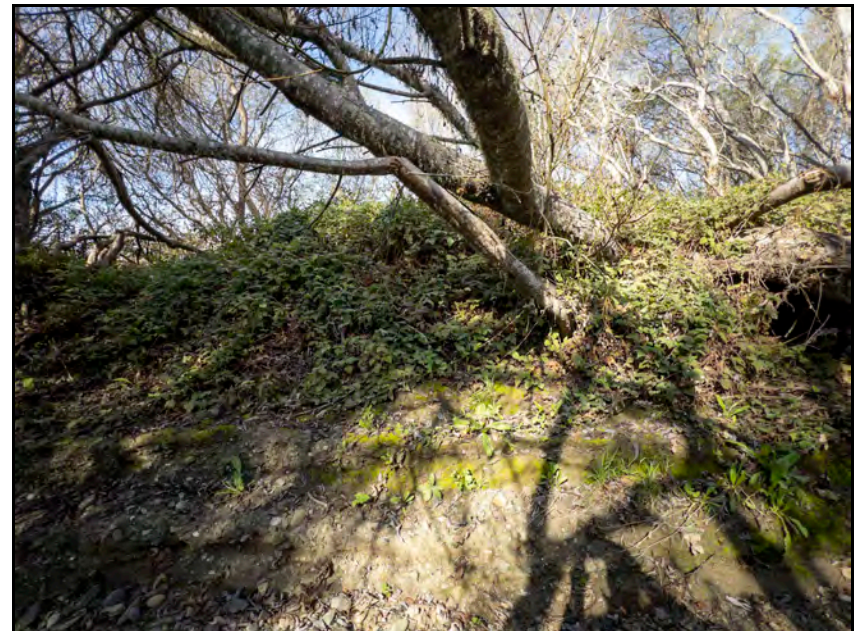
Site 7



Site 7



Site 7



Site 7

CCSD Monitoring February 14, 2022

Exhibit 8



Site 8



Site 8



Site 8



Site 8

CCSD Monitoring February 14, 2022

Exhibit 8



9P7 Well



Walking Bridge PS-1



Estuary PS-2

CCSD Monitoring February 14, 2022

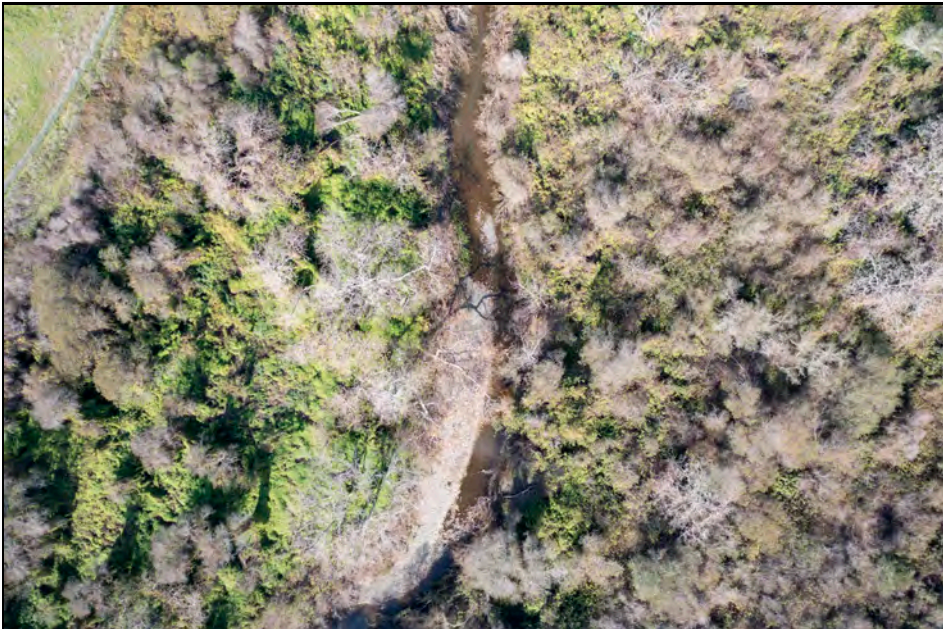
Exhibit 8



Site 1 Aerial



Site 2 Aerial



Site 3 Aerial



Site 4 Aerial

CCSD Monitoring February 14, 2022

Exhibit 8



Site 5 Aerial



Site 7 Aerial



Site 8 Aerial

CCSD Monitoring February 14, 2022

Exhibit 8



Site 1 Riparian Left



Site 1 Riparian Right



Site 2 Riparian Left



Site 2 Riparian Right

CCSD Monitoring February 14, 2022

Exhibit 8



Site 3 Riparian Left



Site 3 Riparian Right



Site 4 Riparian Left



Site 4 Riparian Right

CCSD Monitoring February 14, 2022

Exhibit 8



Site 5 Riparian Left



Site 5 Riparian Right



Site 7 Riparian Left



Site 7 Riparian Right

CCSD Monitoring February 14, 2022

Exhibit 8



Site 8 Riparian Left & Right