

Cambria Community Service District Adaptive Management Plan Biological Monthly Monitoring Report



Prepared by


Cleveland Biological, LLC
cindycleve@gmail.com
805.234.3759

January 12, 2023

AMP Monitoring Locations

San Simeon and Van Gordon Creeks

Legend

 Study Sites



Cleveland Biological, LLC		CCSD AMP Biological Monitoring in San Simeon and Van Gordon Creeks					
Cindy & Paul Cleveland							
Survey Date: 1-12-23		High Tide: 4.12 ft @ 12:36 PM	Low Tide: 2.73 ft @ 7:16 AM	Sandbar Breached: Yes	Stage (718): 3.62		
Location	Site 1	Site 2	Site 3	Site 4	Site 5	Site 7	Site 8
Time	11:15 AM						12:00 PM
Weather (°F, Cloud cover)	64, lt clouds						63, pt cloudy
Habitat							
Stream type (run, riffle, pool)	Run	Riffle	Run	Run	Run	Run	Run
Instream cover type (lwd, swd, etc)	none	riparian veg	none	swd	riparian veg	none	none
Substrate type (cobble, gravel, silt)	na	c, g	c, g	c, g	s, c	c	c
Substrate embedment (%)	na	50	50	100	100	100	75
Algae Surface (%)	0	0	0	20	10	0	0
Algae Subsurface (%)	0	0	0	100	100	0	0
Vegetation							
Instream cover (%)	0	0	0	10	10	0	0
Overhead cover (%)	10	0	10	30	10	80	80
Riparian width-Rt Bank (ft)	150	35	210	135	25	30	30
Riparian width-Lt Bank (ft)	100	10	8.6	230	85	85	55
Riparian Moisture-Rt Bank (%)	25.5	na	na	na	na	na	21.5
Riparian Moisture-Lt Bank (%)	18.6	na	na	na	na	na	19.3
Hydrology							
Maximum depth (ft)	3.1	na	na	na	na	na	0.9
Wetted width (ft)	23.5	na	na	na	na	na	9.4
Flow = Area x Rate (cfs)	125.3	na	na	na	na	na	7.5
Hydrology Calculations							
Depth 1 @ 1/4 (ft)	2.3	na	na	na	na	na	0.6
Depth 2 @ 1/2 (ft)	3	na	na	na	na	na	0.8
Depth 3 @ 3/4 (ft)	2.6	na	na	na	na	na	0.6
Average Depth = total/4 (ft)	2.0	na	na	na	na	na	0.5
Area = Width x Avg Depth (ft^2)	46.4	na	na	na	na	na	4.7
Rate from meter (ft/sec)	2.7	na	na	na	na	na	1.6

	Site 1	Site 2	Site 3	Site 4	Site 5	Site 7*	Site 8
Water Quality							
Temperature (F)	55.3	na	na	na	na	na	55.2
Dissolved Oxygen (%)	97.8	na	na	na	na	na	98
Dissolved Oxygen (ppm)	10.31	na	na	na	na	na	10.33
Total Dissolved Solids (mg/L)	230	na	na	na	na	na	422
Salinity (ppt)	0.17	na	na	na	na	na	0.32
Water Guage							
Water Level (ft)				na			
Site 4 guage is in pool approx. 50 m upstream of Site 4 near right bank. Site 5 guage is at site on left bank.							
Species Observed	None.						
Comments	High flows limited safe access to the banks for Site 1 and Site 8.						
Location Descriptions	Trail by SS-1	Downstream of rock pool	Draw a line from 9P7 along road to the creek	Stream flow starts/ends	Upstream of Van Gordon confluence	Van Gordon accessed at MW-4	Van Gordon accessed from AWTP
GPS	35° 36' 10.23 "N 121° 6' 33.42 "W	35° 35' 57.55 "N 121° 6' 53.39 "W	35° 35' 48.09 "N 121° 6' 54.29 "W	35° 35' 41.88 "N 121° 7' 4.04 "W	35° 35' 40.00 "N 121° 7' 14.25 "W	35° 35' 43.10 "N 121° 7' 13.85 "W	35° 35' 48.06 "N 121° 7' 9.81 "W
*Site 6 is on State Parks property and is not accessible at this time.							
9P7 Soil Moisture †							
North (%)	16.4						
East (%)	17.5						
South (%)	15.1						
West (%)	14.7						
†Moisture measured on each side of well casing. Max reading is 50%.							

CCSD Monitoring January 12, 2023



Site 1



Site 1



Site 1



Site 1

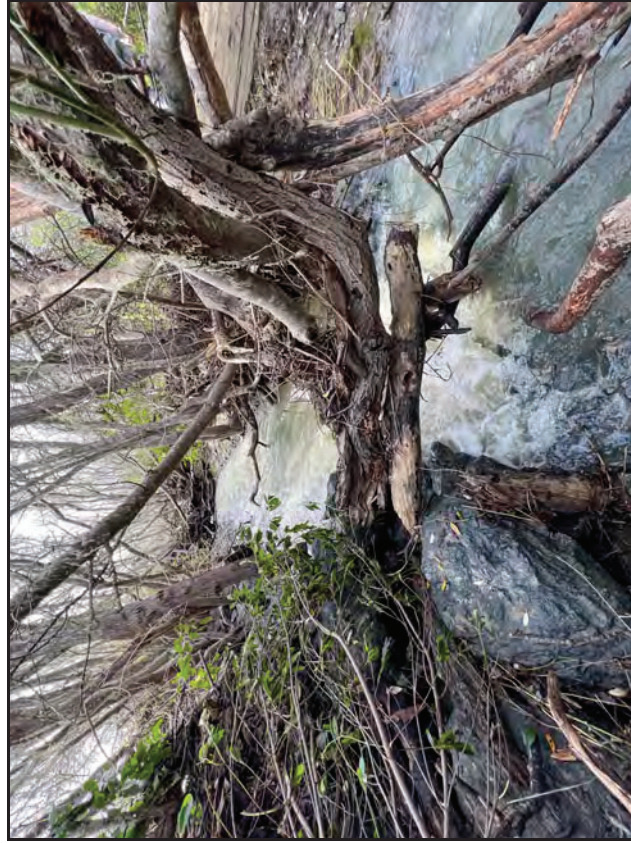
CCSD Monitoring January 12, 2023



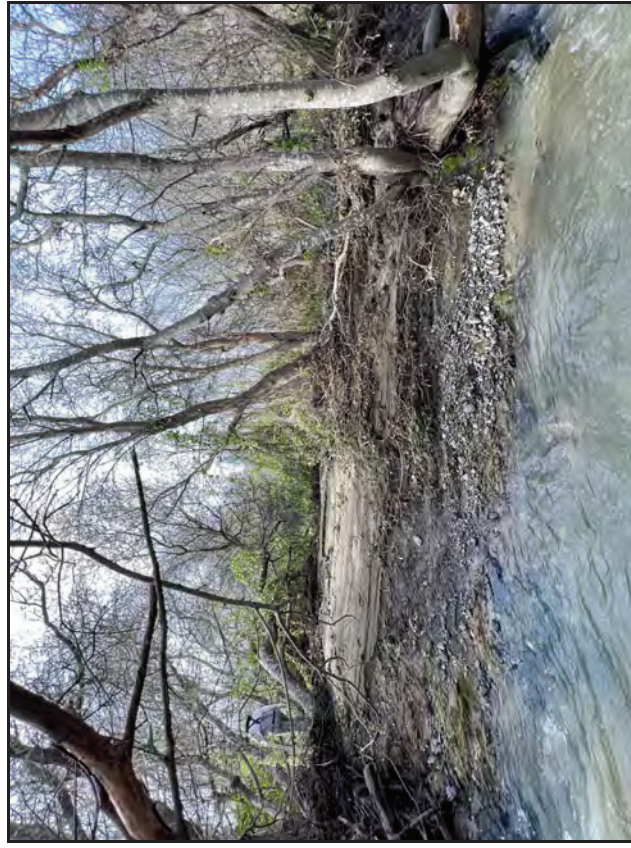
Site 8



Site 8



Site 8

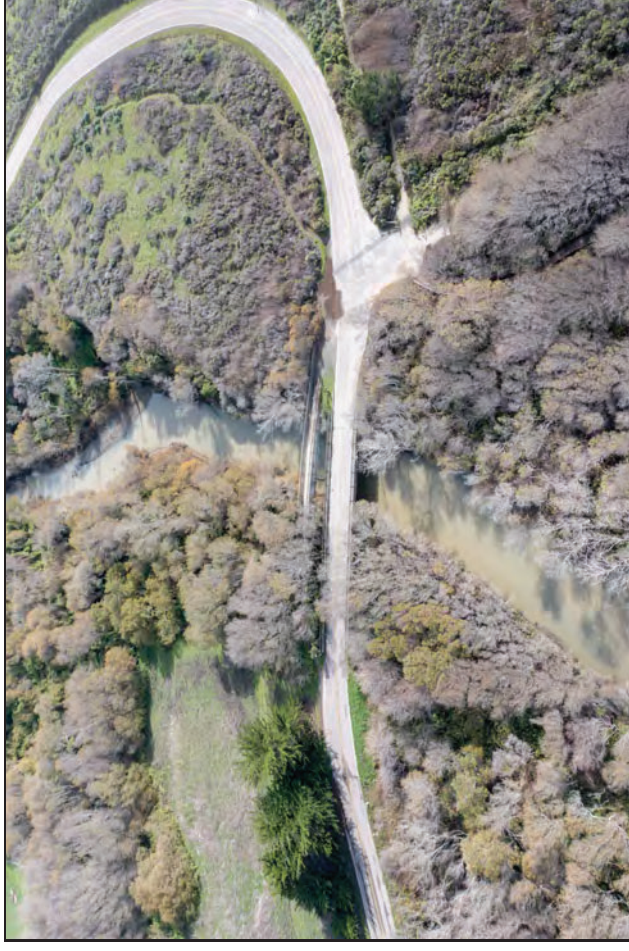


Site 8

CCSD Monitoring January 12, 2023



9P7 Well

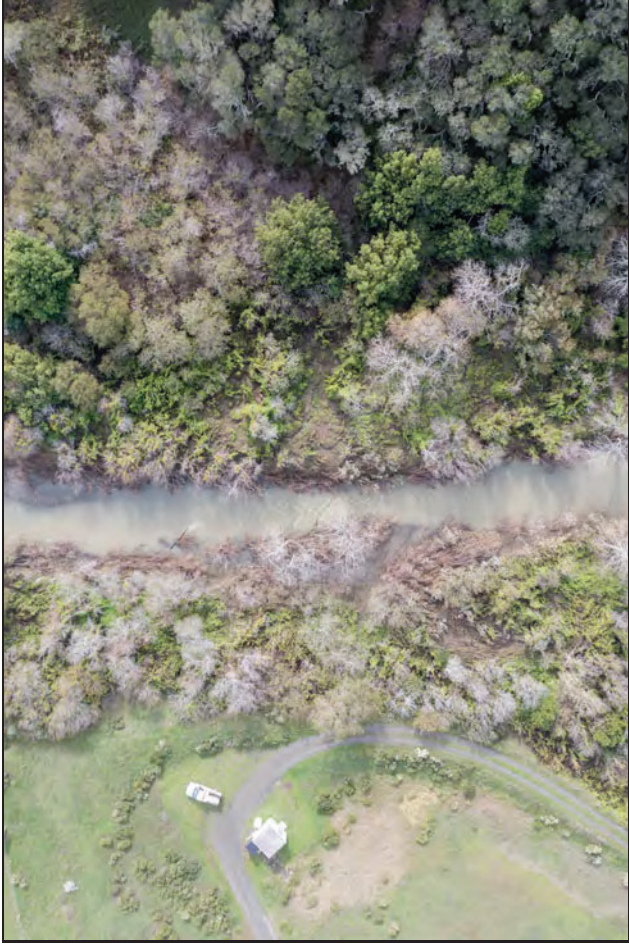


Walking Bridge PS-1



Estuary PS-2

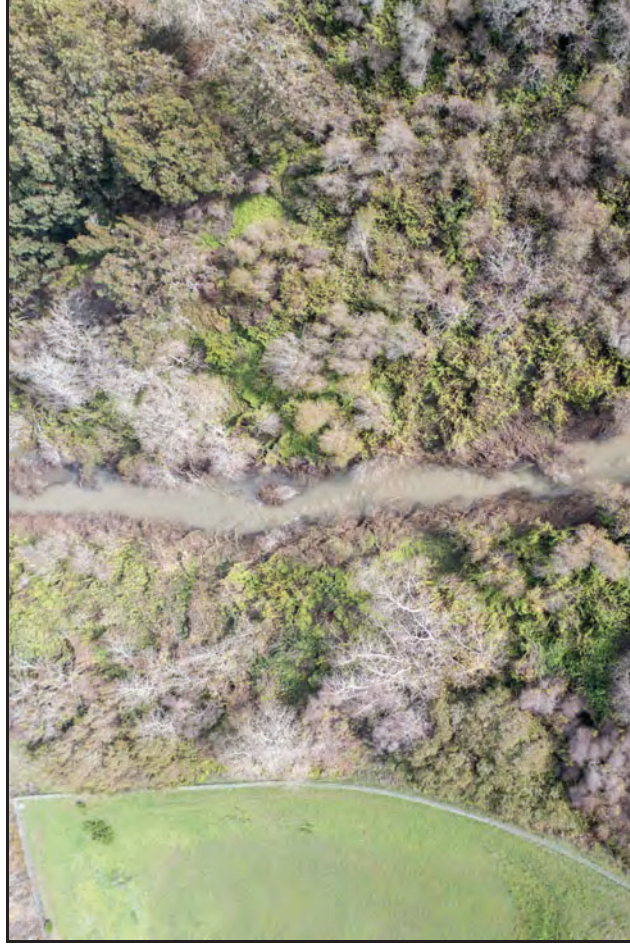
CCSD Monitoring January 12, 2023



Site 1 Aerial



Site 2 Aerial

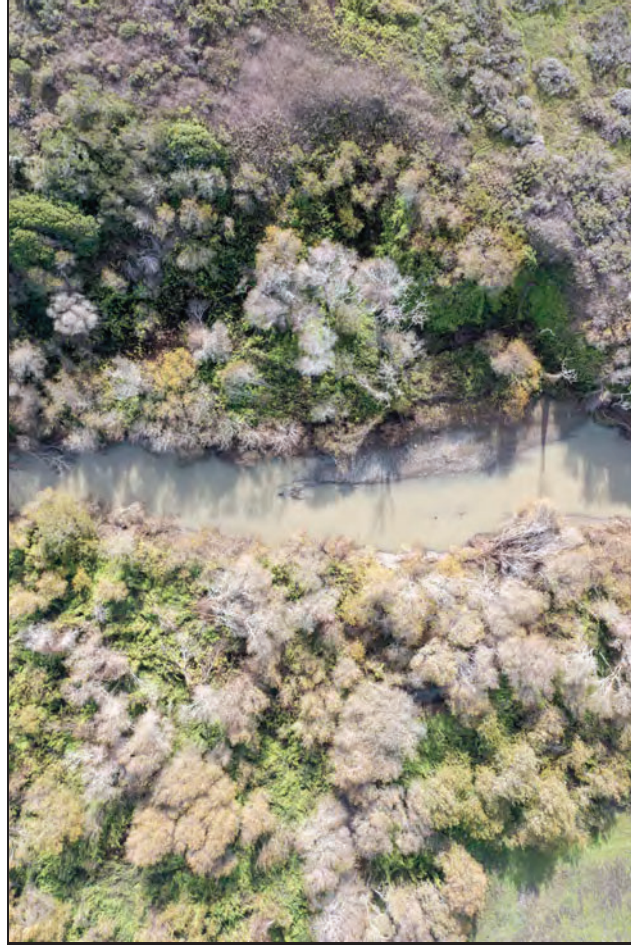


Site 3 Aerial



Site 4 Aerial

CCSD Monitoring January 12, 2023



Site 5 Aerial



Site 7 Aerial



Site 8 Aerial

CCSD Monitoring January 12, 2023



Site 1 Riparian Left



Site 1 Riparian Right

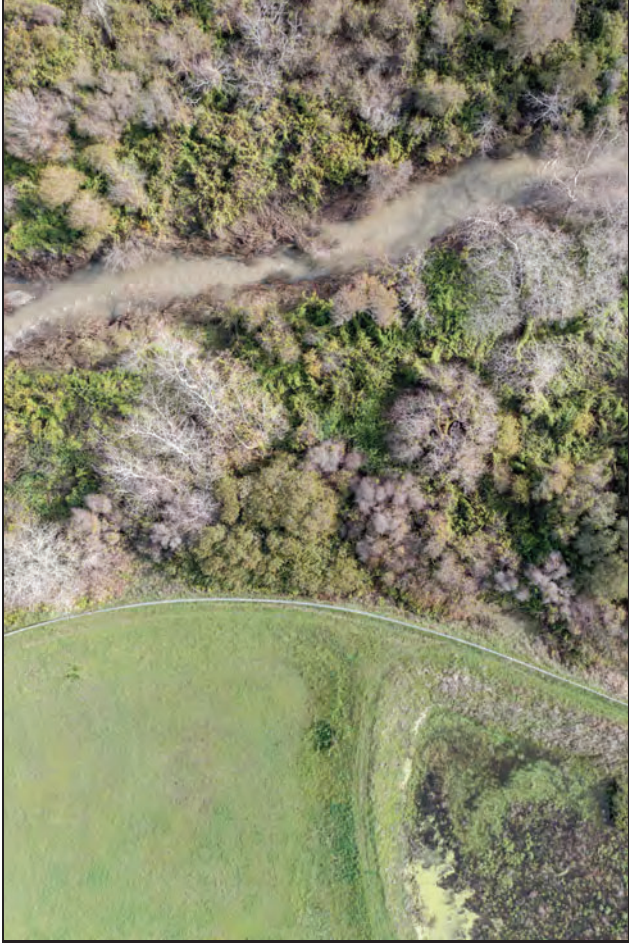


Site 2 Riparian Left



Site 2 Riparian Right

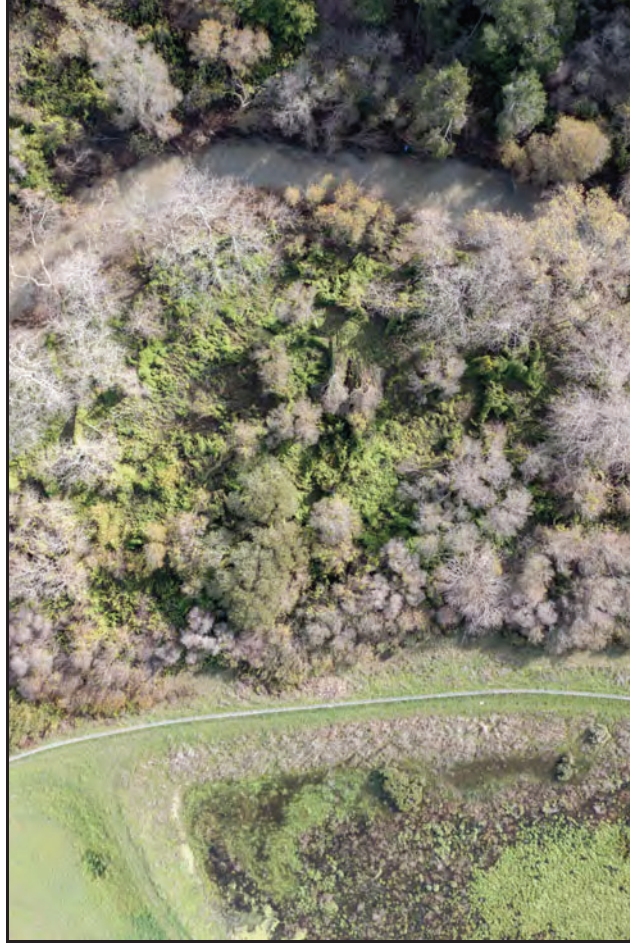
CCSD Monitoring January 12, 2023



Site 3 Riparian Left



Site 3 Riparian Right



Site 4 Riparian Left



Site 4 Riparian Right

CCSD Monitoring January 12, 2023



Site 5 Riparian Left



Site 5 Riparian Right



Site 7 Riparian Left



Site 7 Riparian Right

CCSD Monitoring January 12, 2023



Site 8 Riparian Left & Right

Cambria Community Service District Adaptive Management Plan Biological Monthly Monitoring Report



Prepared by


Cleveland Biological, LLC
cindycleve@gmail.com
805.234.3759

March 9, 2023

AMP Monitoring Locations

San Simeon and Van Gordon Creeks

Legend

 Study Sites



Cleveland Biological, LLC		CCSD AMP Biological Monitoring in San Simeon and Van Gordon Creeks					
Cindy & Paul Cleveland							
Survey Date: 3-9-23		High Tide: 4.43 ft @ 10:54 PM		Low Tide: 0.68 ft @ 5:03 PM		Sandbar Breached: Yes	
							Stage (718): 2.84
Location	Site1	Site2	Site3	Site4	Site5	Site7	Site8
Time	11:40 AM	11:20 AM	10:55 AM	10:45 AM	10:25 AM	10:15 AM	9:55 AM
Weather (°F, Cloud cover)	62, clouds	62, clouds	62, clouds	62, clouds	62, clouds	62, clouds	62, clouds
Habitat							
Stream type (run, riffle, pool)	Run	Riffle	Run	Run	Run	Run	Run
Instream cover type (lwd, swd, etc)	none	riparian veg	none	none	riparian veg	none	none
Substrate type (cobble, gravel, silt)	s	c, g	c, g	c, g	s, c	c	c
Substrate embeddedness (%)	100	25	50	50	75	50	75
Algae Surface (%)	0	0	0	0	0	0	0
Algae Subsurface (%)	0	0	0	0	0	0	0
Vegetation							
Instream cover (%)	0	0	10	0	10	0	0
Overhead cover (%)	10	0	10	10	10	70	70
Riparian width-Rt Bank (ft)	150	35	210	135	25	30	30
Riparian width-Lt Bank (ft)	100	10	8.6	230	85	85	55
Riparian Moisture-Rt Bank (%)	24.0	19.2	20.3	17.9	9.8	20.6	24.5
Riparian Moisture-Lt Bank (%)	20.1	16.8	19.7	23.0	19.5	19.2	18.5
Hydrology							
Maximum depth (ft)	2.5	1.5	1.9	1.4	1.7	0.3	0.5
Wetted width (ft)	25	25.5	13	16.5	29.5	6	6.5
Flow = Area x Rate (cfs)	33.5	42.3	35.8	22.5	43.1	1.0	1.9
Hydrology Calculations							
Depth 1 @ 1/4 (ft)	2	1.4	1.4	1.2	1	0.15	0.2
Depth 2 @ 1/2 (ft)	2.4	1.5	1.7	1.4	1.2	0.29	0.3
Depth 3 @ 3/4 (ft)	2.3	1	1.9	1.3	1.7	0.28	0.4
Average Depth = total/4 (ft)	1.7	1.0	1.3	1.0	1.0	0.2	0.2
Area = Width x Avg Depth (ft^2)	41.9	24.9	16.3	16.1	28.8	1.1	1.5
Rate from meter (ft/sec)	0.8	1.7	2.2	1.4	1.5	0.9	1.3

	Site 1	Site 2	Site 3	Site 4	Site 5	Site 7*	Site 8
Water Quality							
Temperature (F)	52.3	51.9	51.6	51.2	50.9	50.3	49.9
Dissolved Oxygen (%)	100.7	100.3	99.6	97.6	96.9	101.2	99.4
Dissolved Oxygen (ppm)	11.02	11.04	10.99	10.83	10.8	11.38	11.25
Total Dissolved Solids (mg/L)	295	304	303	315	327	42	43
Salinity (ppt)	0.22	0.23	0.23	0.24	0.24	0.03	0.04
Water Gauge							
Water Level (ft)				na	na		
Site 4 gauge is in pool approx. 50 m upstream of Site 4 near right bank. Site 5 gauge is at site on left bank.							
Species Observed	One western pond turtle in side channel below Site 1.						
Comments	High flows but accessible with caution. Some areas were difficult to pass and required hiking around. Rain beginning with heavy rains expected over the next week.						
Location Descriptions	Trail by SS-1	Downstream of rock pool	Draw a line from 9P7 along road to the creek	Stream flow starts/ends	Upstream of Van Gordon confluence	Van Gordon accessed at MW-4	Van Gordon accessed from AWTP
GPS	35° 36' 0.23 "N 121° 6' 33.42 "W	35° 35' 57.55 "N 121° 6' 53.39 "W	35° 35' 48.09 "N 121° 6' 54.29 "W	35° 35' 41.88 "N 121° 7' 4.04 "W	35° 35' 40.00 "N 121° 7' 14.25 "W	35° 35' 43.10 "N 121° 7' 13.85 "W	35° 35' 48.06 "N 121° 7' 9.81 "W
*Site 6 is on State Parks property and is not accessible at this time.							
9P7 Soil Moisture †							
North (%)	19.1						
East (%)	14.6						
South (%)	16.1						
West (%)	17.6						
†Moisture measured on each side of well casing. Max reading is 50%.							

CCSD Monitoring March 9, 2023



Site 1



Site 1



Site 1



Site 1

CCSD Monitoring March 9, 2023



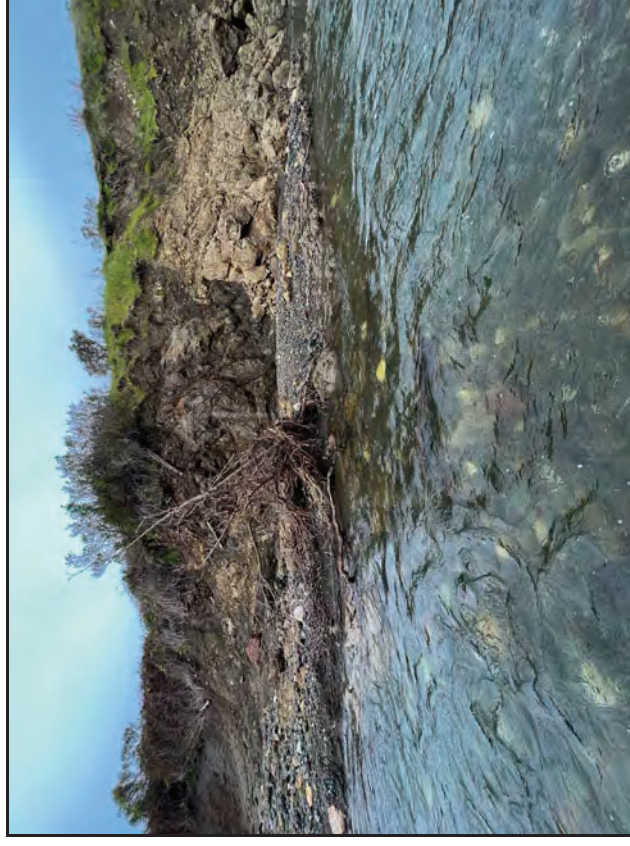
Site 2



Site 2



Site 2



Site 2

CCSD Monitoring March 9, 2023



Site 3



Site 3



Site 3



Site 3

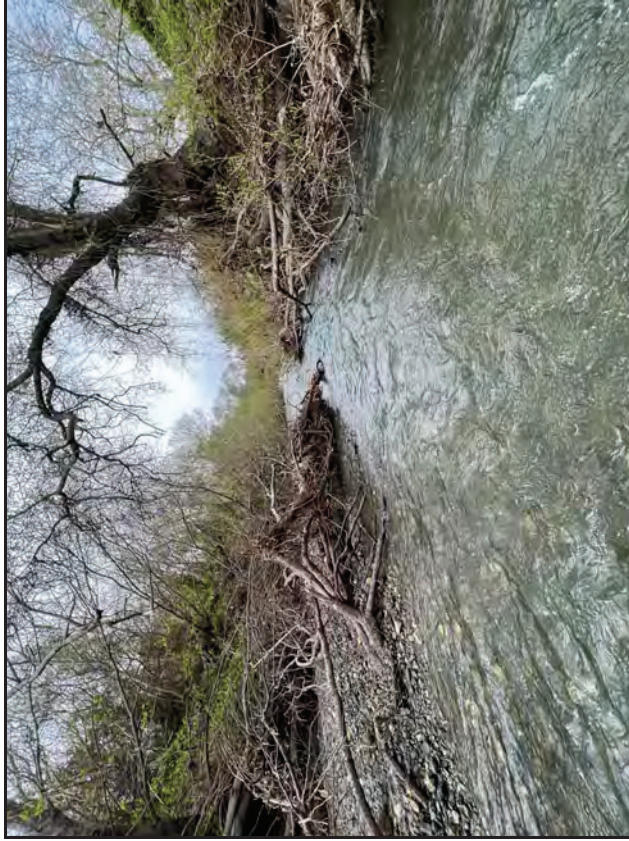
CCSD Monitoring March 9, 2023



Site 4



Site 4



Site 4



Site 4

CCSD Monitoring March 9, 2023



Site 5



Site 5



Site 5



Site 5

CCSD Monitoring March 9, 2023



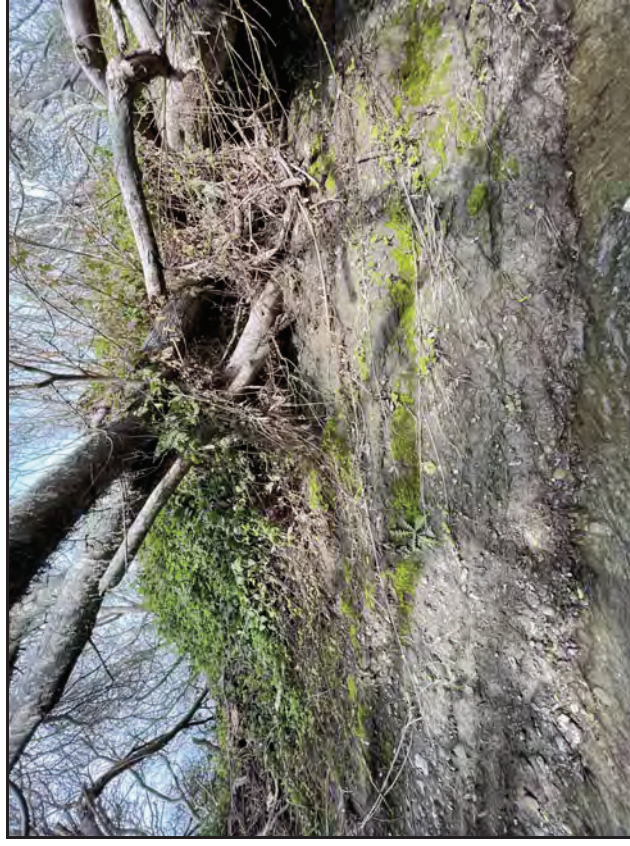
Site 7



Site 7



Site 7



Site 7

CCSD Monitoring March 9, 2023



Site 8



Site 8



Site 8



Site 8

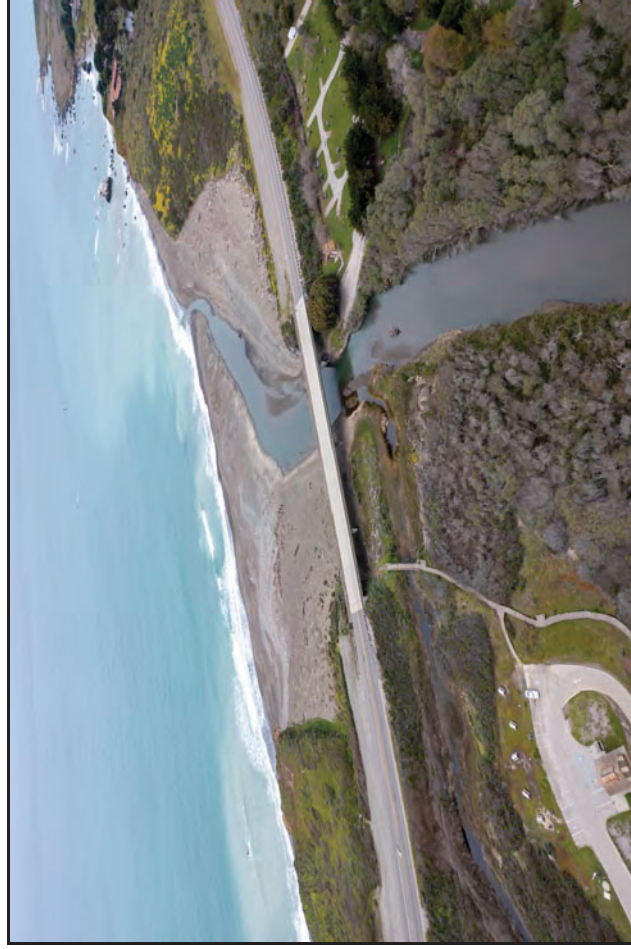
CCSD Monitoring March 9, 2023



9P7 Well

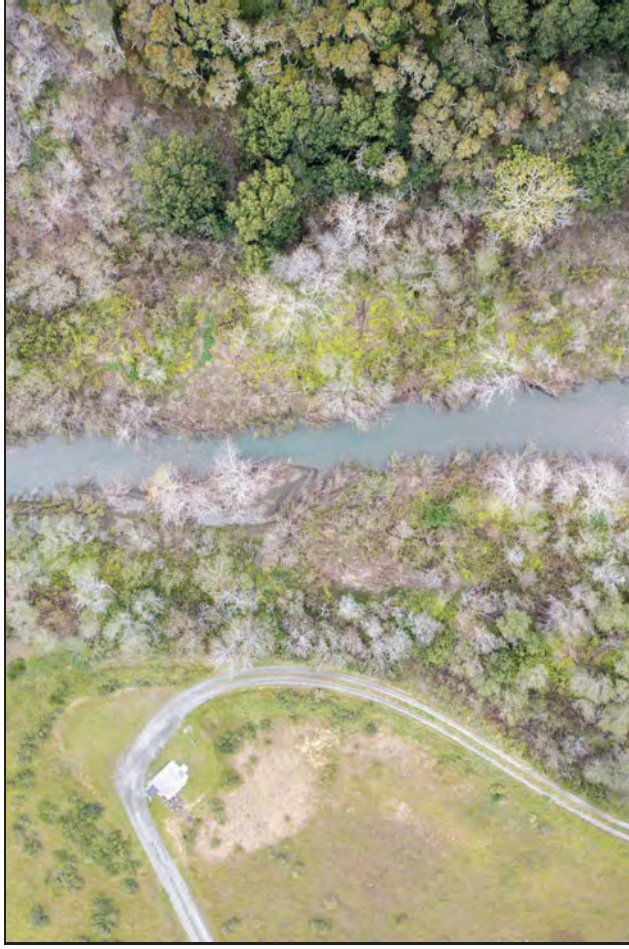


Walking Bridge PS-1



Estuary PS-2

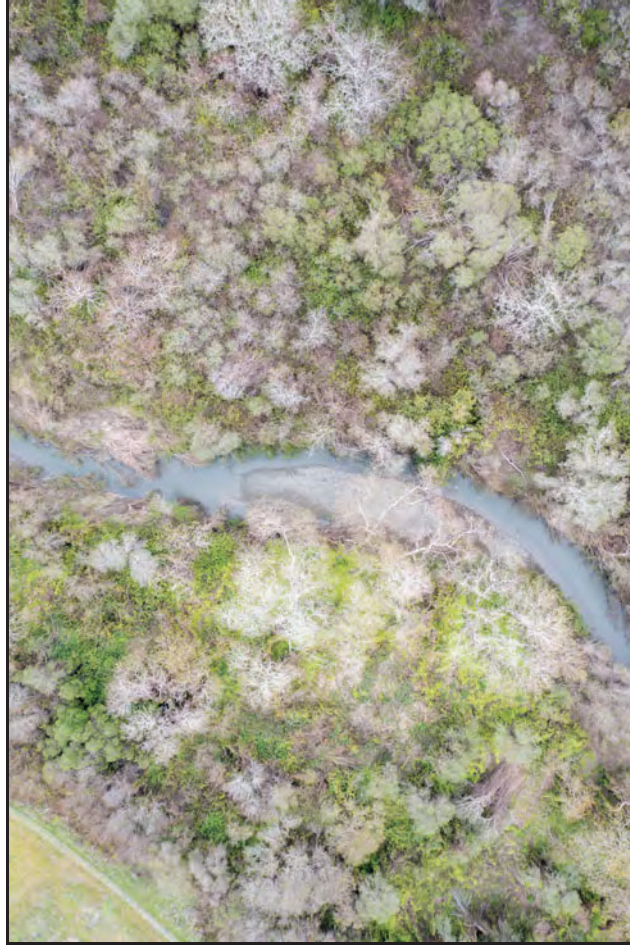
CCSD Monitoring March 9, 2023



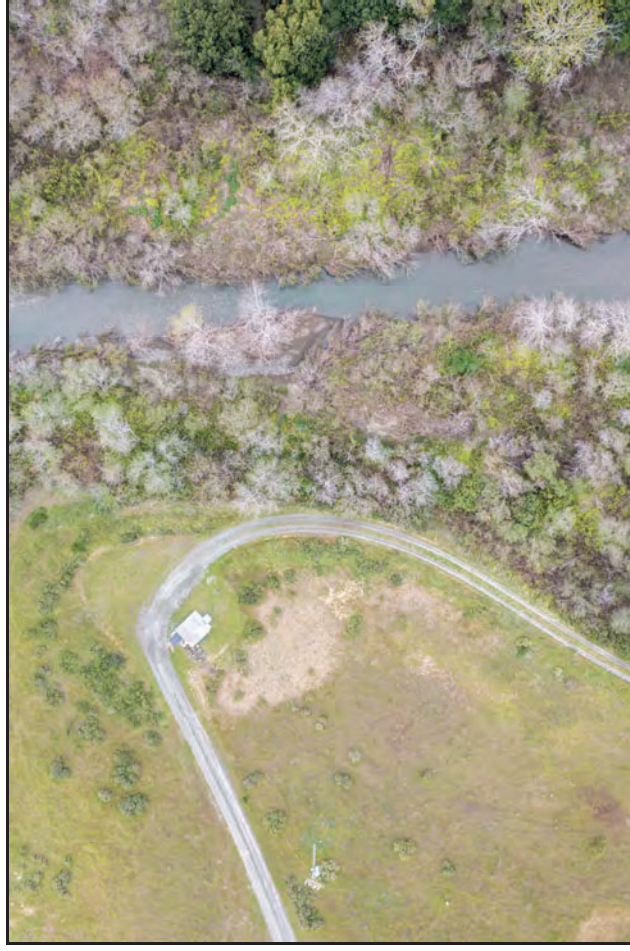
Site 1 Aerial



Site 2 Aerial

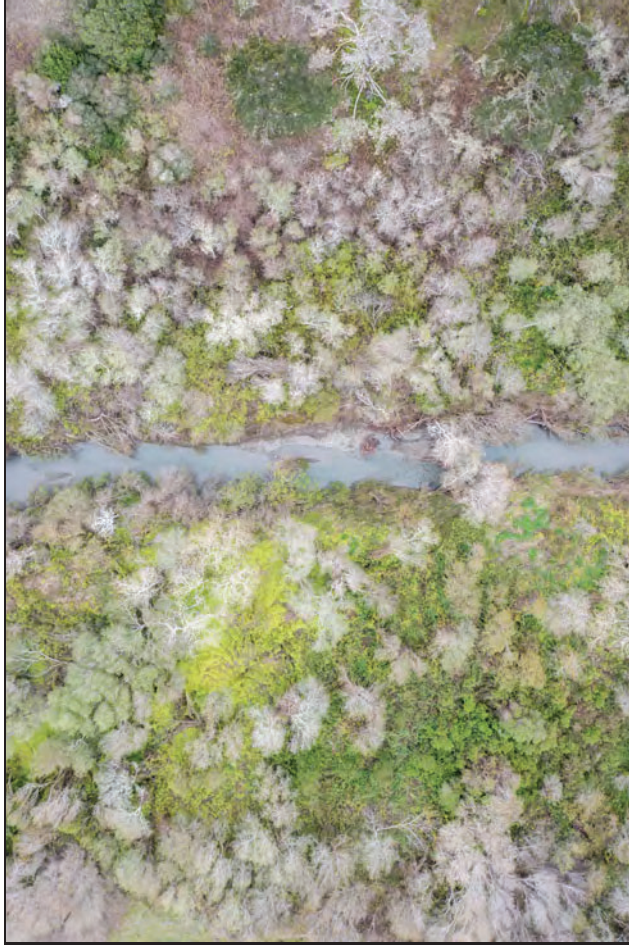


Site 3 Aerial



Site 1 Riparian Left

CCSD Monitoring March 9, 2023



Site 4 Aerial



Site 5 Aerial

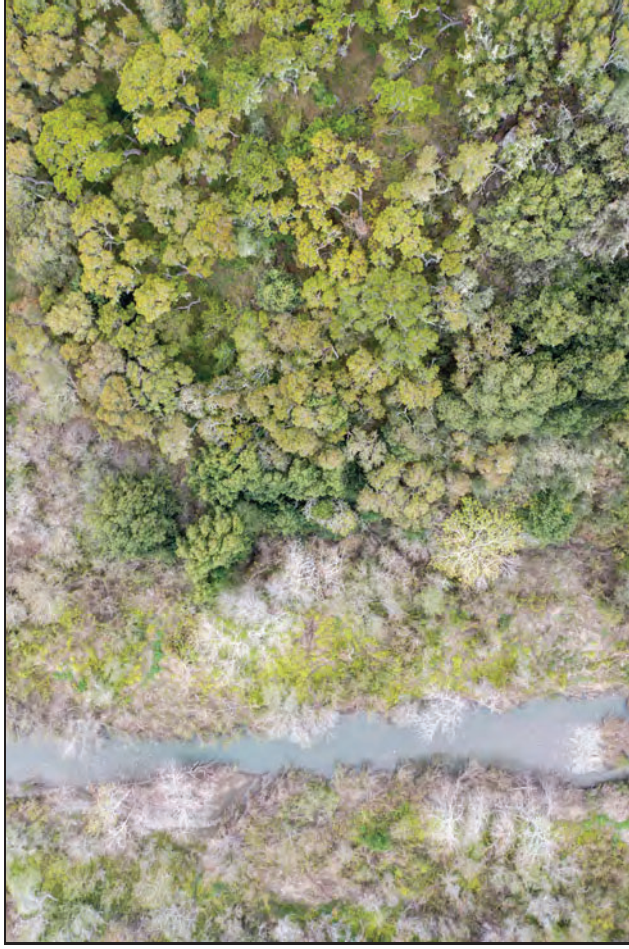


Site 7 Aerial



Site 8 Aerial

CCSD Monitoring March 9, 2023



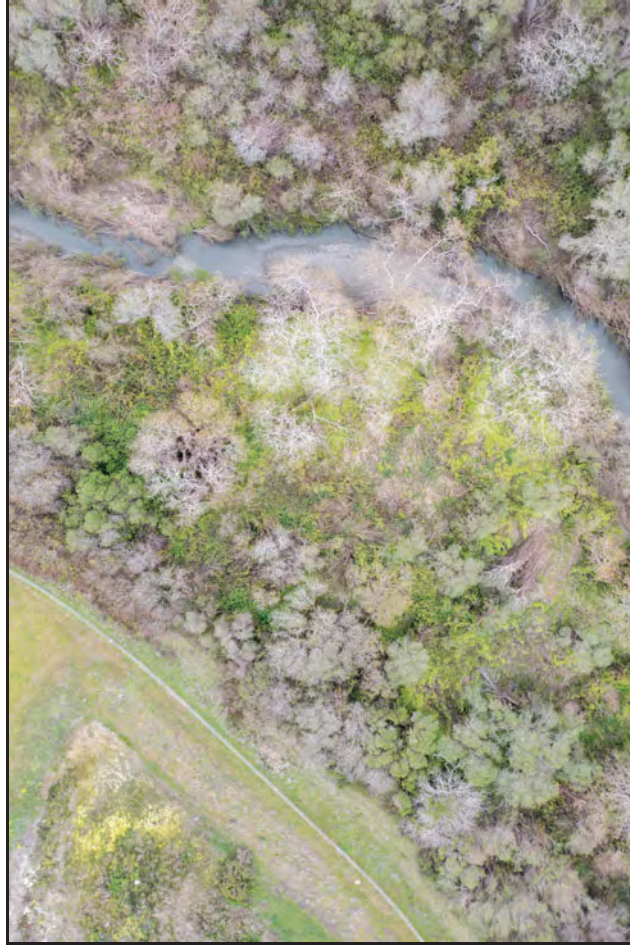
Site 1 Riparian Right



Site 2 Riparian Left



Site 2 Riparian Right



Site 3 Riparian Left

CCSD Monitoring March 9, 2023



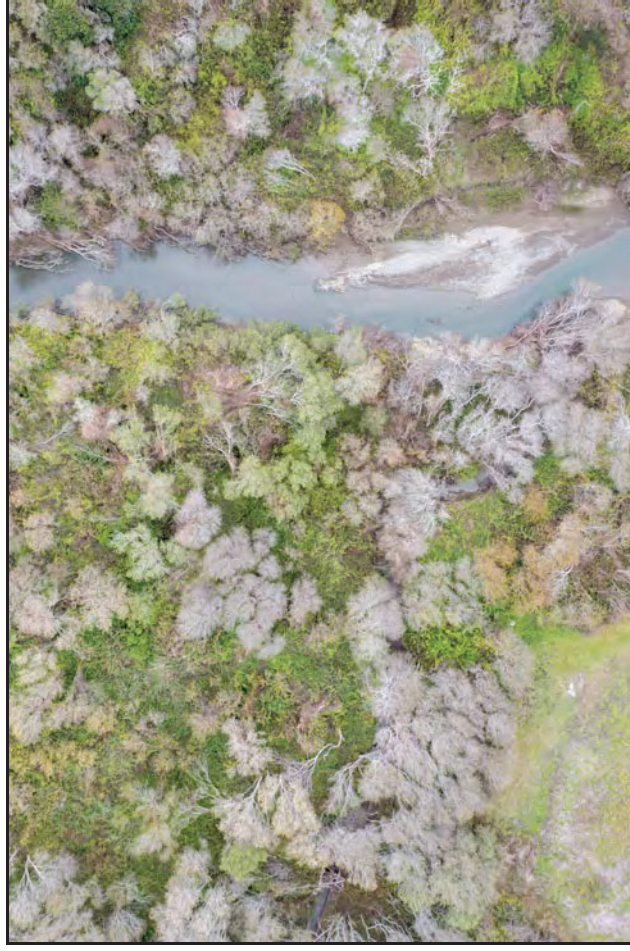
Site 3 Riparian Right



Site 4 Riparian Left



Site 4 Riparian Right



Site 5 Riparian Left

CCSD Monitoring March 9, 2023



Site 5 Riparian Right



Site 7 Riparian Left



Site 7 Riparian Right



Site 8 Riparian Left & Right

Cambria Community Service District Adaptive Management Plan Biological Monthly Monitoring Report



Prepared by


Cleveland Biological, LLC
cindycleve@gmail.com
805.234.3759

April 26, 2023

AMP Monitoring Locations

San Simeon and Van Gordon Creeks

Legend

 Study Sites



Cleveland Biological, LLC		CCSD AMP Biological Monitoring in San Simeon and Van Gordon Creeks				
Cindy & Paul Cleveland						
Survey Date: 4-26-23		High Tide: 3:39 ft @ 6:54 PM		Low Tide: 0.04 ft @ 10:38 AM		Sandbar Breached: Yes
Location	Site 1	Site 2	Site 3	Site 4	Site 5	Site 7
Time	12:10 PM	11:47 AM	11:20 AM	11:05 AM	10:44 AM	10:20 AM
Weather (°F, Cloud cover)	60, clearing	60, clearing	58, clearing	56, overcast	56, overcast	52, overcast
Habitat						
Stream type (run, riffle, pool)	Riffle	Riffle	Run	Run	Run	Run
Instream cover type (lwd, swd, etc)	none	riparian veg	none	none	riparian veg	none
Substrate type (cobble, gravel, silt)	s	c, g	c, g	c, g	s, c	c
Substrate embeddedness (%)	25	25	100	50	75	50
Algae Surface (%)	0	0	0	0	0	0
Algae Subsurface (%)	0	0	0	0	0	0
Vegetation						
Instream cover (%)	0	0	5	0	10	0
Overhead cover (%)	10	0	10	10	10	70
Riparian width-Rt Bank (ft)	150	35	210	135	25	30
Riparian width-Lt Bank (ft)	100	10	8.6	230	85	85
Riparian Moisture-Rt Bank (%)						
Riparian Moisture-Lt Bank (%)						
Hydrology						
Maximum depth (ft)	1.3	2.7	0.9	2.1	1.9	0.6
Wetted width (ft)	39.5	14.5	52	31	75	5
Flow = Area x Rate (cfs)	16.6	15.0	9.4	12.6	16.9	0.9
Hydrology Calculations						
Depth 1 @ 1/4 (ft)	0.9	2.5	0.5	1.6	1.1	0.25
Depth 2 @ 1/2 (ft)	0.4	1.9	0.3	1.7	1.6	0.4
Depth 3 @ 3/4 (ft)	0.8	1.5	0.4	2.1	1.8	0.5
Average Depth = total/4 (ft)	0.5	1.5	0.3	1.4	1.1	0.3
Area = Width x Avg Depth (ft^2)	20.7	21.4	15.6	41.9	84.4	1.4
Rate from meter (ft/sec)	0.8	0.7	0.6	0.3	0.2	0.6
Stage (718): 2.42						

	Site 1	Site 2	Site 3	Site 4	Site 5	Site 7*	Site 8
Water Quality							
Temperature (F)	62.9	61	59.2	63.9	57.7	55.6	55.5
Dissolved Oxygen (%)	103.6	102.6	99.5	102.2	102.5	110.3	104.2
Dissolved Oxygen (ppm)	9.96	10.11	10	9.72	10.48	11.57	10.94
Total Dissolved Solids (mg/L)	388	398	394	409	450	416	571
Salinity (ppt)	0.29	0.29	0.3	0.31	0.34	0.31	0.43
Water Gauge							
Water Level (ft)				na	na		
Site 4 guage is in pool approx. 50 m upstream of Site 4 near right bank. Site 5 guage is at site on left bank.							
Species Observed	Bald eagle, 5 stickleback between Sites 1 & 2.						
Comments	The creek had an increased open channel since the last survey.						
Location Descriptions	Trail by SS-1	Downstream of rock pool	Draw a line from 9P7 along road to the creek	Stream flow starts/ends	Upstream of Van Gordon confluence	Van Gordon accessed at MW-4	Van Gordon accessed from AWTP
GPS	35° 36' 10.23 "N 121° 6' 33.42 "W	35° 35' 57.55 "N 121° 6' 53.39 "W	35° 35' 48.09 "N 121° 6' 54.29 "W	35° 35' 41.88 "N 121° 7' 4.04 "W	35° 35' 40.00 "N 121° 7' 14.25 "W	35° 35' 43.10 "N 121° 7' 13.85 "W	35° 35' 48.06 "N 121° 7' 9.81 "W
*Site 6 is on State Parks property and is not accessible at this time.							
9P7 Soil Moisture †							
North (%)	15						
East (%)	10.9						
South (%)	2.1						
West (%)	10.2						
†Moisture measured on each side of well casing. Max reading is 50%.							

CCSD Monitoring April 26, 2023



Site 1



Site 1



Site 1



Site 1

CCSD Monitoring April 26, 2023



Site 2



Site 2



Site 2



Site 2

CCSD Monitoring April 26, 2023



Site 3



Site 3



Site 3



Site 3

CCSD Monitoring April 26, 2023



Site 4



Site 4



Site 4



Site 4

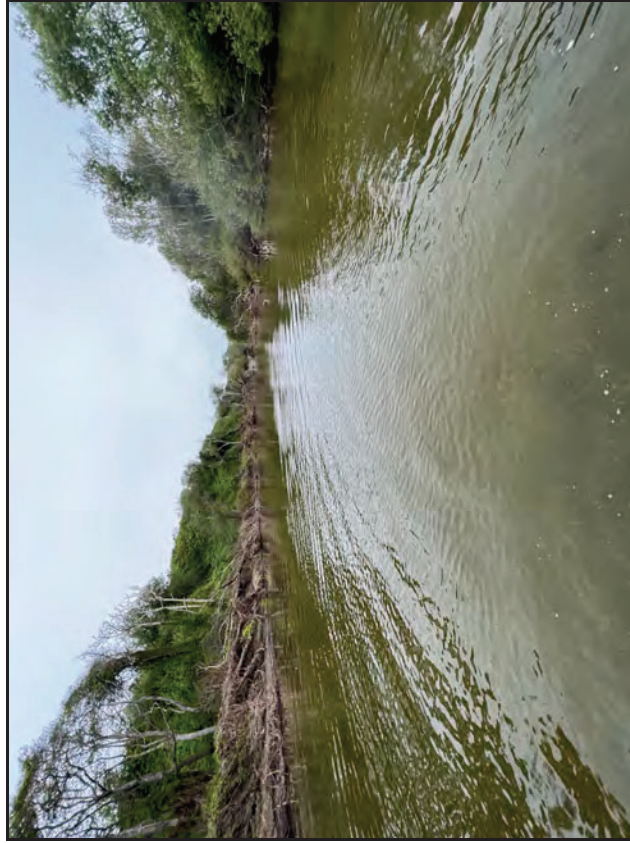
CCSD Monitoring April 26, 2023



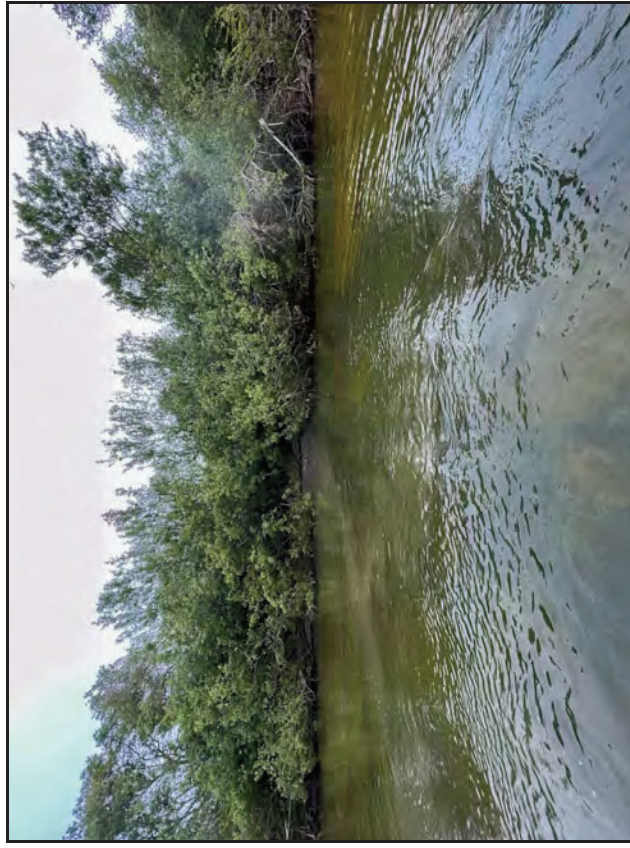
Site 5



Site 5



Site 5



Site 5

CCSD Monitoring April 26, 2023



Site 7



Site 7



Site 7



Site 7

CCSD Monitoring April 26, 2023



Site 8



Site 8



Site 8



Site 8

CCSD Monitoring April 26, 2023



9P7 Well



Estuary PS-2

CCSD Monitoring April 26, 2023



Site 1 Aerial



Site 2 Aerial



Site 3 Aerial



Site 4 Aerial

CCSD Monitoring April 26, 2023



Site 5 Aerial



Site 7 Aerial

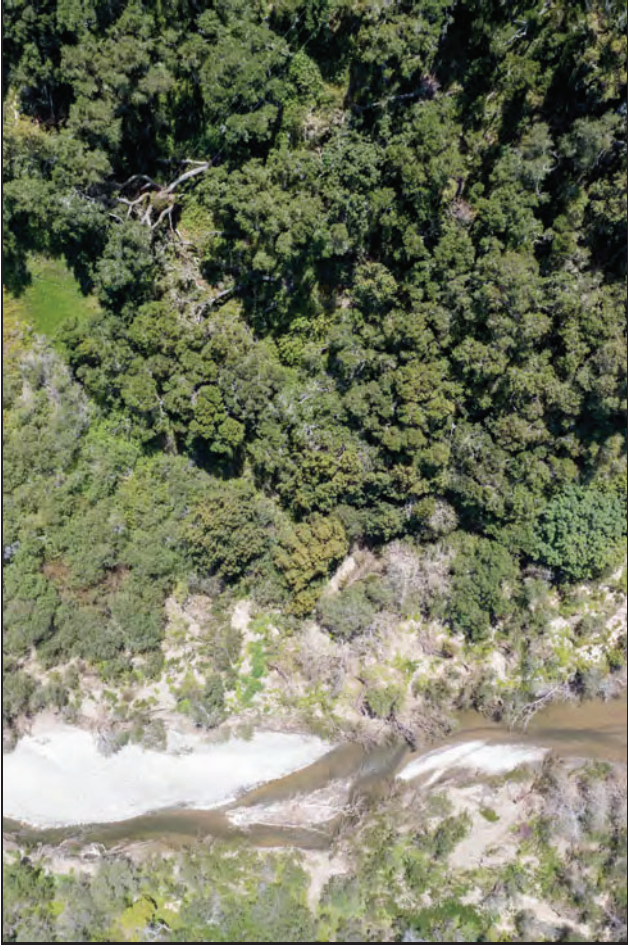


Site 8 Aerial

CCSD Monitoring April 26, 2023



Site 1 Riparian Left



Site 1 Riparian Right



Site 2 Riparian Left



Site 2 Riparian Right

CCSD Monitoring April 26, 2023



Site 3 Riparian Left



Site 3 Riparian Right



Site 4 Riparian Left



Site 4 Riparian Right

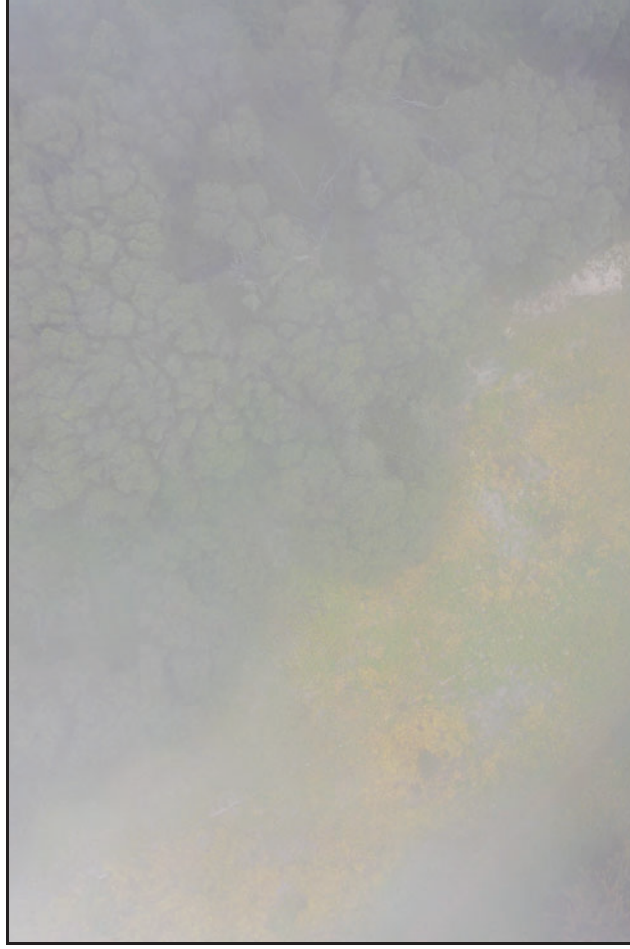
CCSD Monitoring April 26, 2023



Site 5 Riparian Left



Site 5 Riparian Right



Site 7 Riparian Left



Site 7 Riparian Right

CCSD Monitoring April 26, 2023



Site 8 Riparian Left & Right

Cambria Community Service District Adaptive Management Plan Biological Monthly Monitoring Report



Prepared by


Cleveland Biological, LLC
cindycleve@gmail.com
805.234.3759

May 20, 2023

AMP Monitoring Locations

San Simeon and Van Gordon Creeks

Legend

 Study Sites



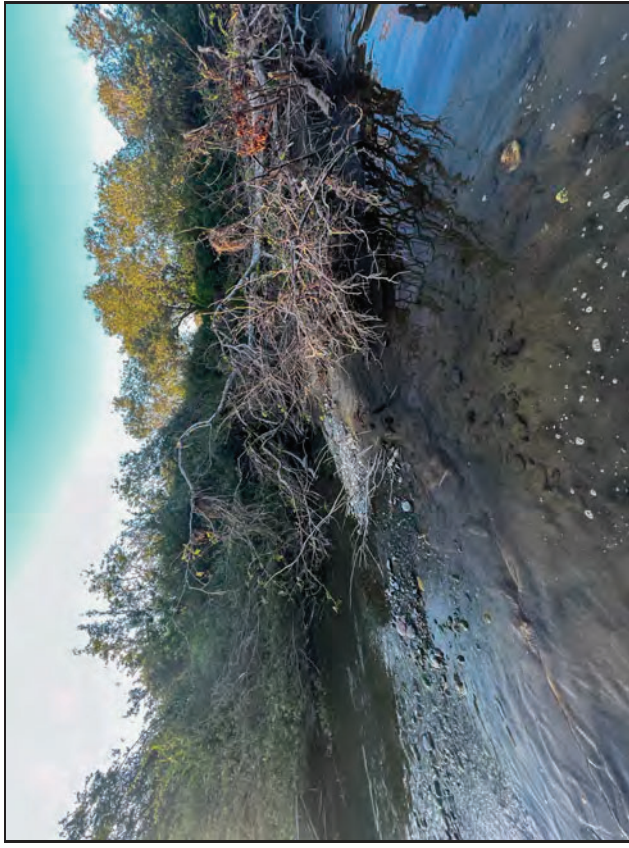
Cleveland Biological, LLC		CCSD AMP Biological Monitoring in San Simeon and Van Gordon Creeks				Stage (718): 2.26	
Cindy & Paul Cleveland							
Survey Date: 5-20-23		High Tide: 3.48 ft @ 12:34 PM		Low Tide: 2.43 ft @ 4:42 PM		Sandbar Breached: No	
Location	Site 1	Site 2	Site 3	Site 4	Site 5	Site 7	Site 8
Time	7:20 PM	7:05 PM	6:20 PM	5:55 PM	5:30 PM	5:12 PM	4:50 PM
Weather (°F, Cloud cover)	57, pt cloudy	57, pt cloudy	58, pt cloudy	58, pt cloudy	60, pt cloudy	60, pt cloudy	60, pt cloudy
Habitat							
Stream type (run, riffle, pool)	Riffle	Riffle	Run	Run	Run	Run	Run
Instream cover type (lwd, swd, etc)	none	riparian veg	none	none	riparian veg	none	none
Substrate type (cobble, gravel, silt)	s	c, g	c, g	c, g	s, c	c	c
Substrate embeddedness (%)	25	25	100	50	75	50	25
Algae Surface (%)	0	0	0	0	0	0	0
Algae Subsurface (%)	0	0	0	0	0	0	0
Vegetation							
Instream cover (%)	0	0	5	0	10	0	0
Overhead cover (%)	10	0	10	10	10	70	70
Riparian width-Rt Bank (ft)	150	35	210	135	25	30	30
Riparian width-Lt Bank (ft)	100	10	8.6	230	85	85	55
Riparian Moisture-Rt Bank (%)							
Riparian Moisture-Lt Bank (%)							
Hydrology							
Maximum depth (ft)	1.2	13	0.8	1.8	1.8	0.3	0.25
Wetted width (ft)	37	2.7	45	24.5	100	3.5	5
Flow = Area x Rate (cfs)	8.3	1.2	3.2	3.7	19.0	0.2	0.1
Hydrology Calculations							
Depth 1 @ 1/4 (ft)	0.8	1.3	0.5	1.7	1.6	0.05	0.2
Depth 2 @ 1/2 (ft)	0.5	1.9	0.4	1	1.3	0.1	0.2
Depth 3 @ 3/4 (ft)	0.5	2.7	0.5	0.3	0.9	0.25	0.1
Average Depth = total/4 (ft)	0.5	1.5	0.4	0.8	1.0	0.1	0.1
Area = Width x Avg Depth (ft^2)	16.7	4.0	15.8	18.4	95.0	0.4	0.6
Rate from meter (ft/sec)	0.5	0.3	0.2	0.2	0.2	0.6	0.2

	Site 1	Site 2	Site 3	Site 4	Site 5	Site 7*	Site 8
Water Quality							
Temperature (F)	69.7	69.7	69.7	69	57.7	64.8	65.4
Dissolved Oxygen (%)	97.1	96.8	97.8	93.8	102.5	99.3	95.4
Dissolved Oxygen (ppm)	8.7	8.63	8.71	8.42	10.48	9.35	8.94
Total Dissolved Solids (mg/L)	402	411	413	454	450	207	533
Salinity (ppt)	0.3	0.31	0.31	0.34	0.34	0.15	0.4
Water Gauge							
Water Level (ft)				na	na		
Site 4 gauge is in pool approx. 50 m upstream of Site 4 near right bank. Site 5 gauge is at site on left bank.							
Species Observed	Probable tidewater goby stranded in a pool between Sites 3 & 4.						
Comments	The creek is open, wide, and flowing.						
Location Descriptions	Trail by SS-1	Downstream of rock pool	Draw a line from 9P7 along road to the creek	Stream flow starts/ends	Upstream of Van Gordon confluence	Van Gordon accessed at MW-4	Van Gordon accessed from AWTP
GPS	35° 36' 10.23 "N 121° 6' 33.42 "W	35° 35' 57.55 "N 121° 6' 53.39 "W	35° 35' 48.09 "N 121° 6' 54.29 "W	35° 35' 41.88 "N 121° 7' 4.04 "W	35° 35' 40.00 "N 121° 7' 14.25 "W	35° 35' 43.10 "N 121° 7' 13.85 "W	35° 35' 48.06 "N 121° 7' 9.81 "W
*Site 6 is on State Parks property and is not accessible at this time.							
9P7 Soil Moisture †							
North (%)	10.9						
East (%)	3.2						
South (%)	3.9						
West (%)	13.7						
†Moisture measured on each side of well casing. Max reading is 50%.							

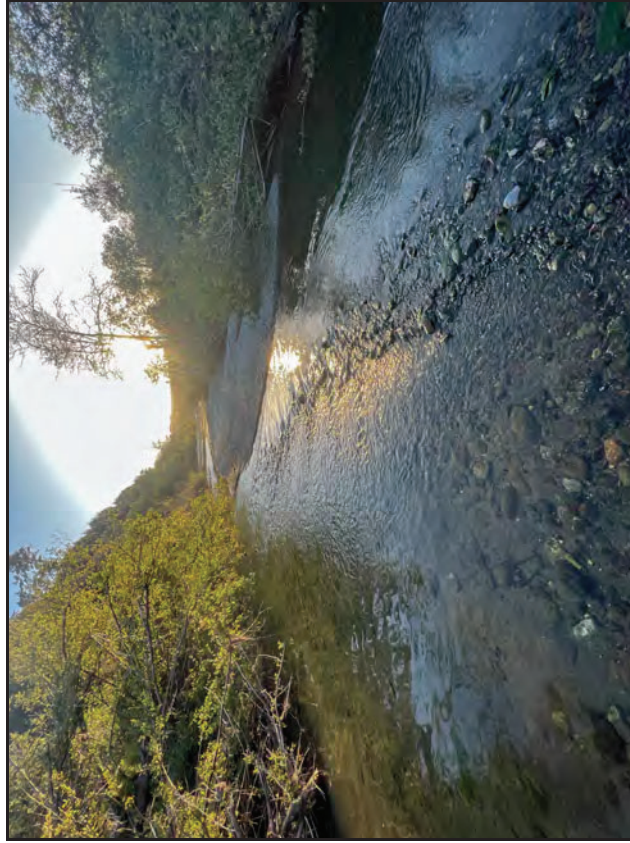
CCSD Monitoring May 20, 2023



Site 1



Site 1



Site 1

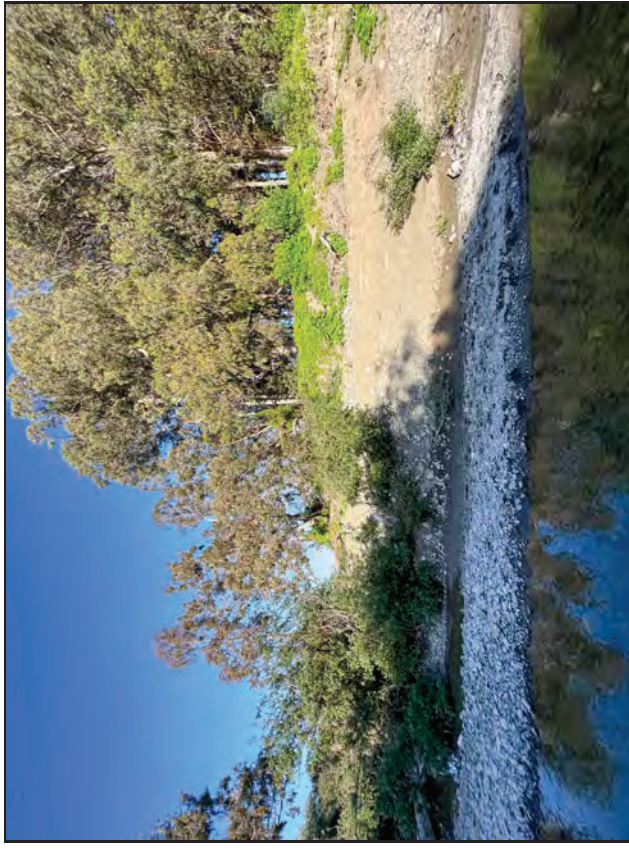


Site 1

CCSD Monitoring May 20, 2023



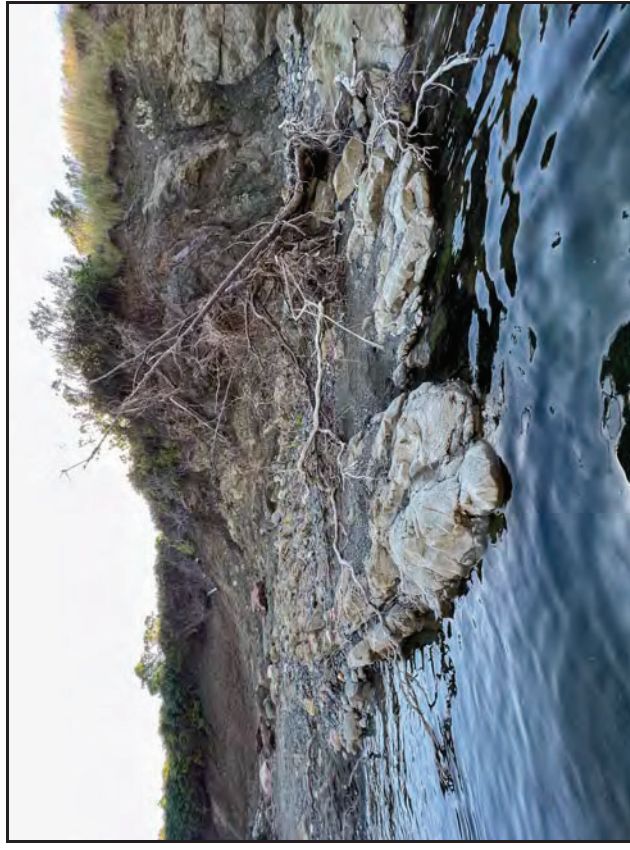
Site 2



Site 2



Site 2



Site 2

CCSD Monitoring May 20, 2023



Site 3



Site 3

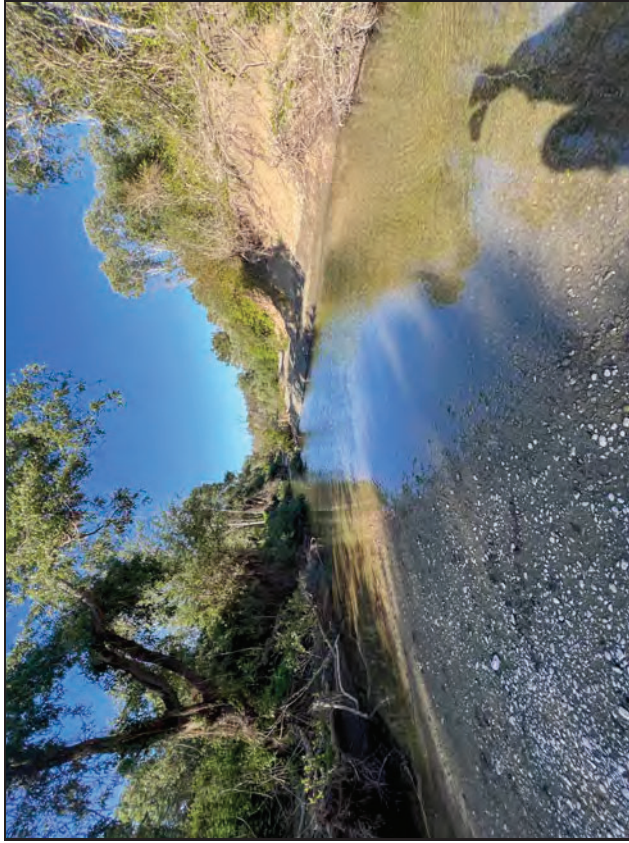


Site 3



Site 3

CCSD Monitoring May 20, 2023



Site 4



Site 4



Site 4

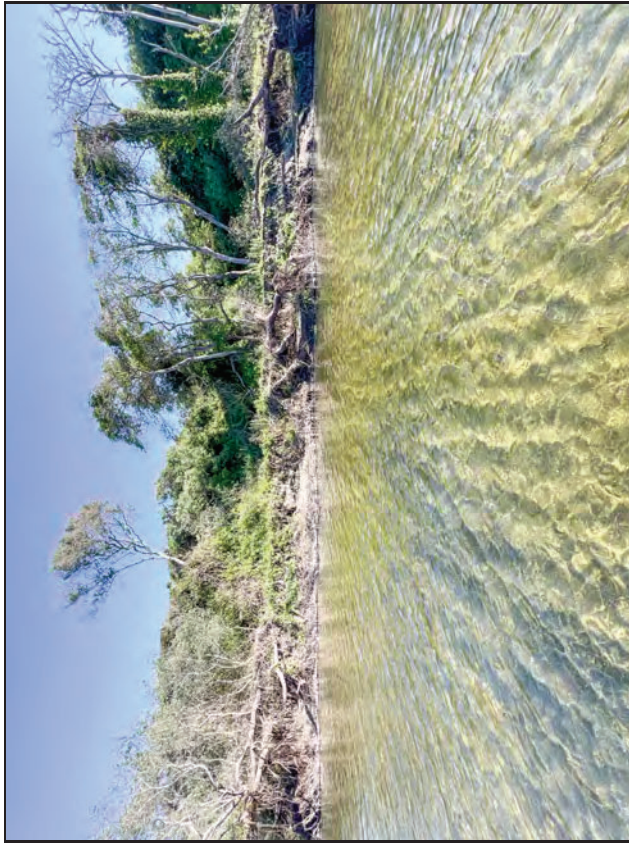


Site 4

CCSD Monitoring May 20, 2023



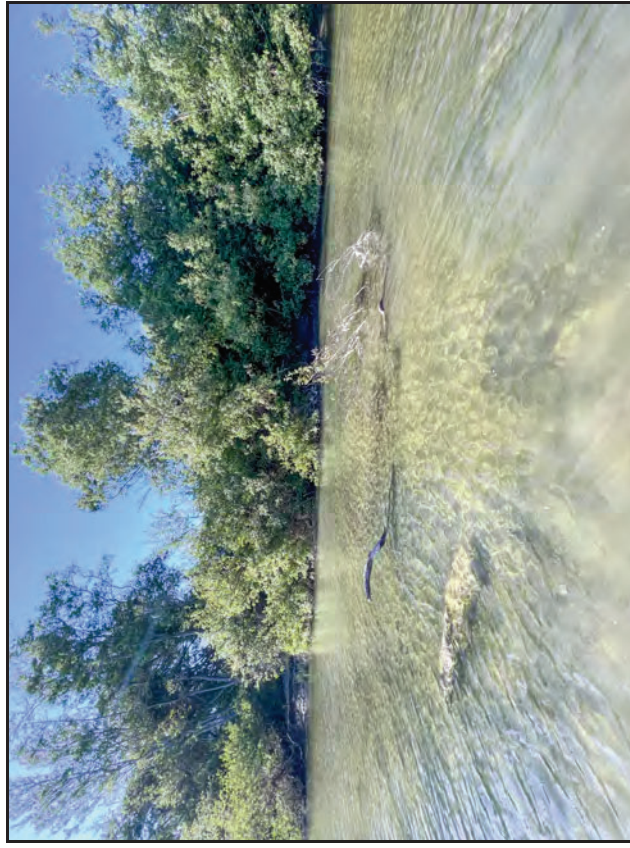
Site 5



Site 5



Site 5



Site 5

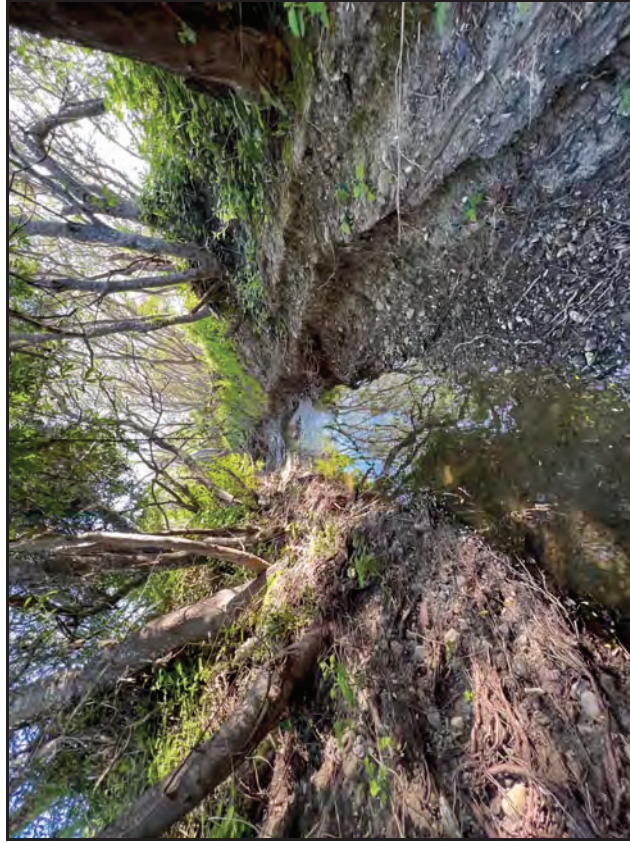
CCSD Monitoring May 20, 2023



Site 7



Site 7

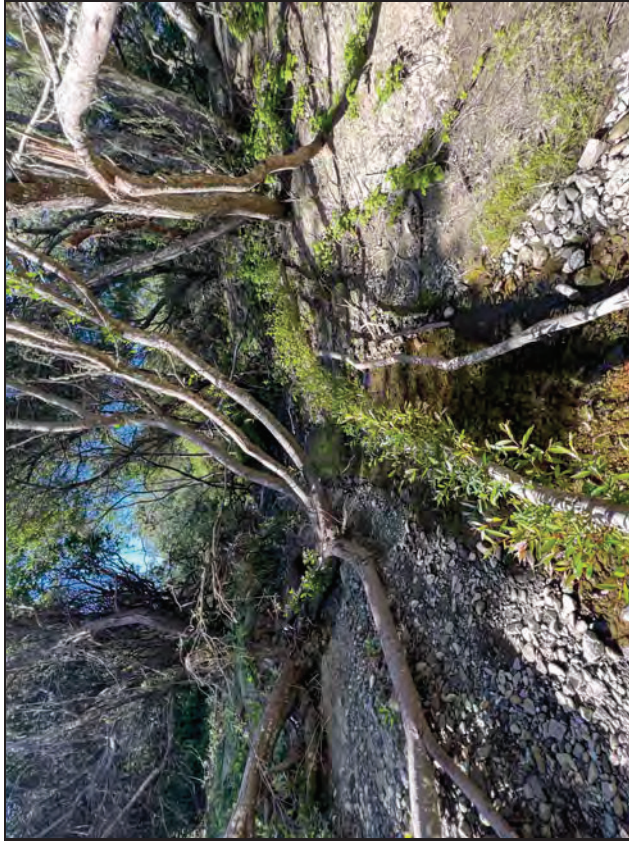


Site 7



Site 7

CCSD Monitoring May 20, 2023



Site 8



Site 8



Site 8



Site 8

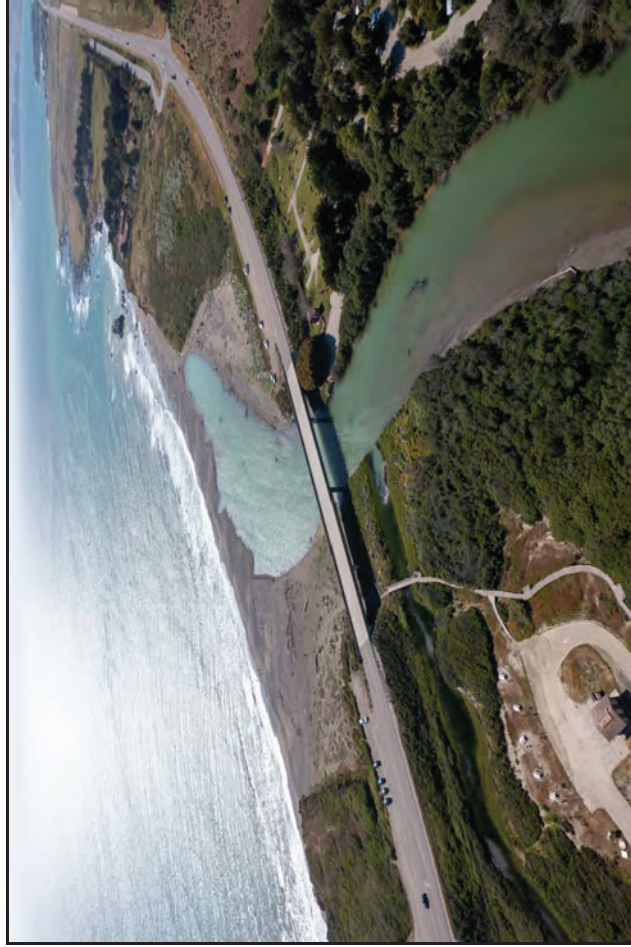
CCSD Monitoring May 20, 2023



9P7 Well



Walking Bridge PS-1



Estuary PS-2

CCSD Monitoring May 20, 2023



Site 1 Aerial



Site 2 Aerial



Site 3 Aerial



Site 4 Aerial

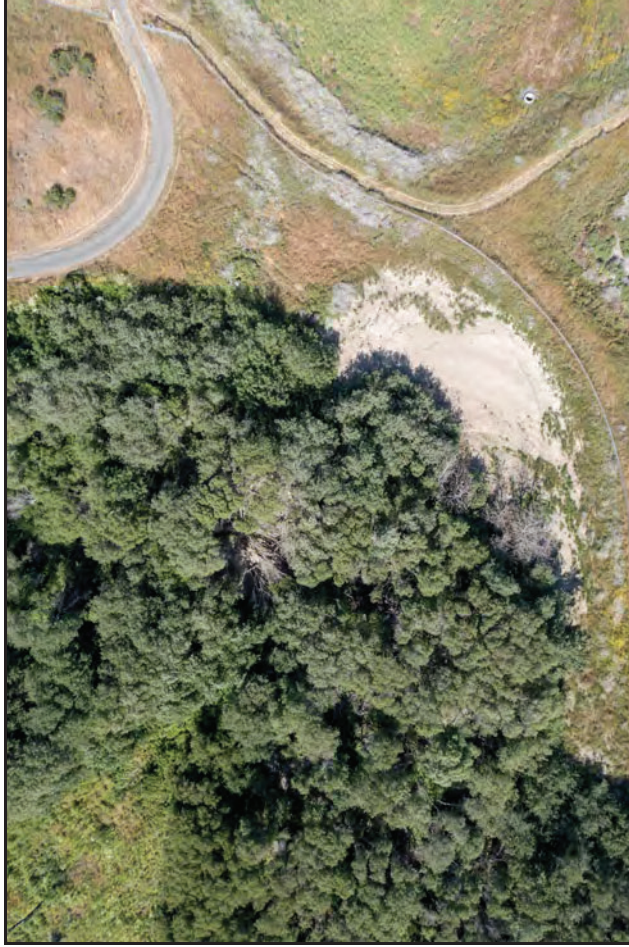
CCSD Monitoring May 20, 2023



Site 5 Aerial



Site 7 Aerial



Site 8 Aerial

CCSD Monitoring May 20, 2023



Site 1 Riparian Left



Site 1 Riparian Right



Site 2 Riparian Left



Site 2 Riparian Right

CCSD Monitoring May 20, 2023



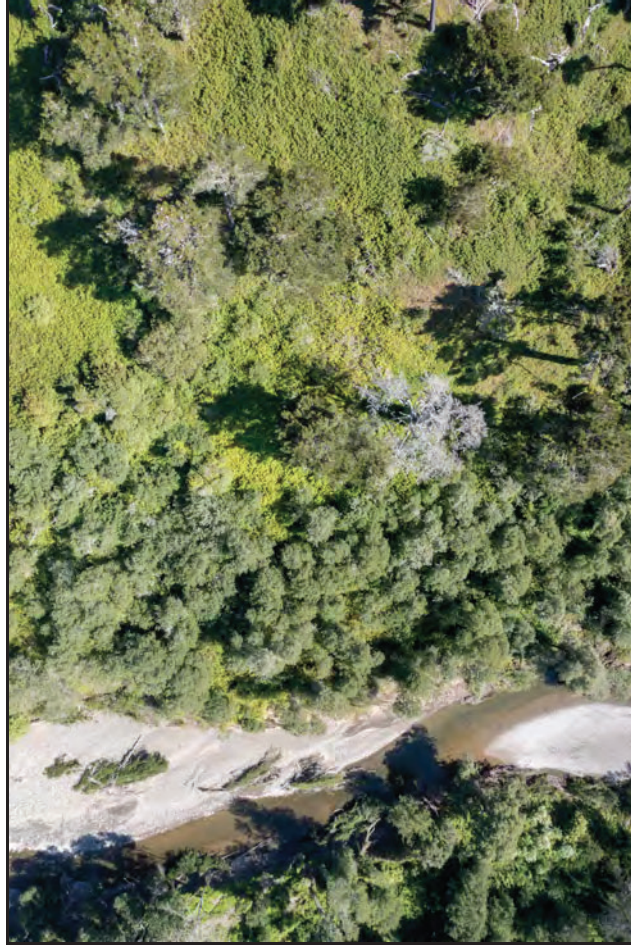
Site 3 Riparian Left



Site 3 Riparian Right



Site 4 Riparian Left



Site 4 Riparian Right

CCSD Monitoring May 20, 2023



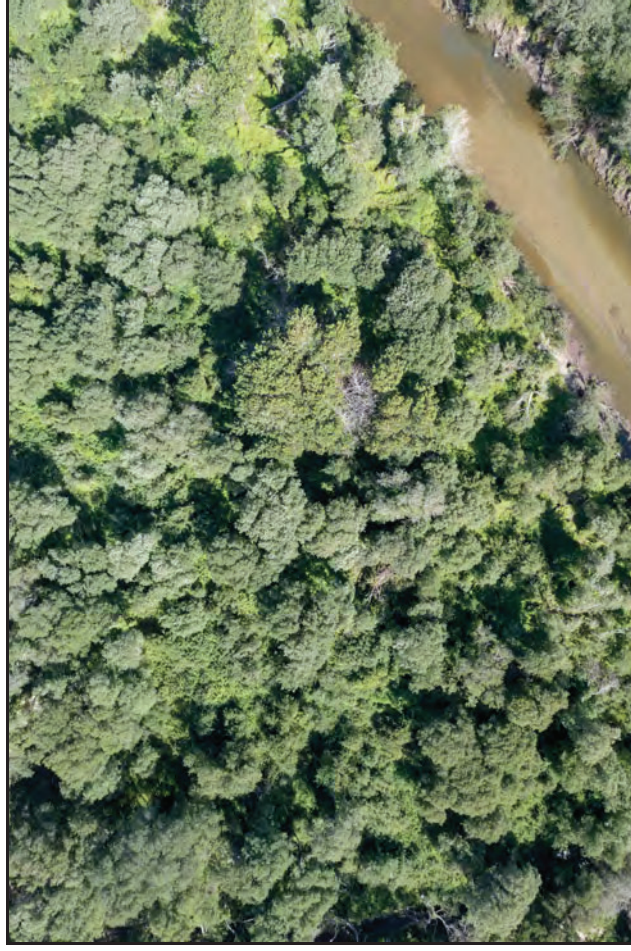
Site 5 Riparian Left



Site 5 Riparian Right



Site 7 Riparian Left



Site 7 Riparian Right

CCSD Monitoring May 20, 2023




Site 8 Riparian Left & Right

AMP Monitoring Locations

San Simeon and Van Gordon Creeks

Legend

 Study Sites

