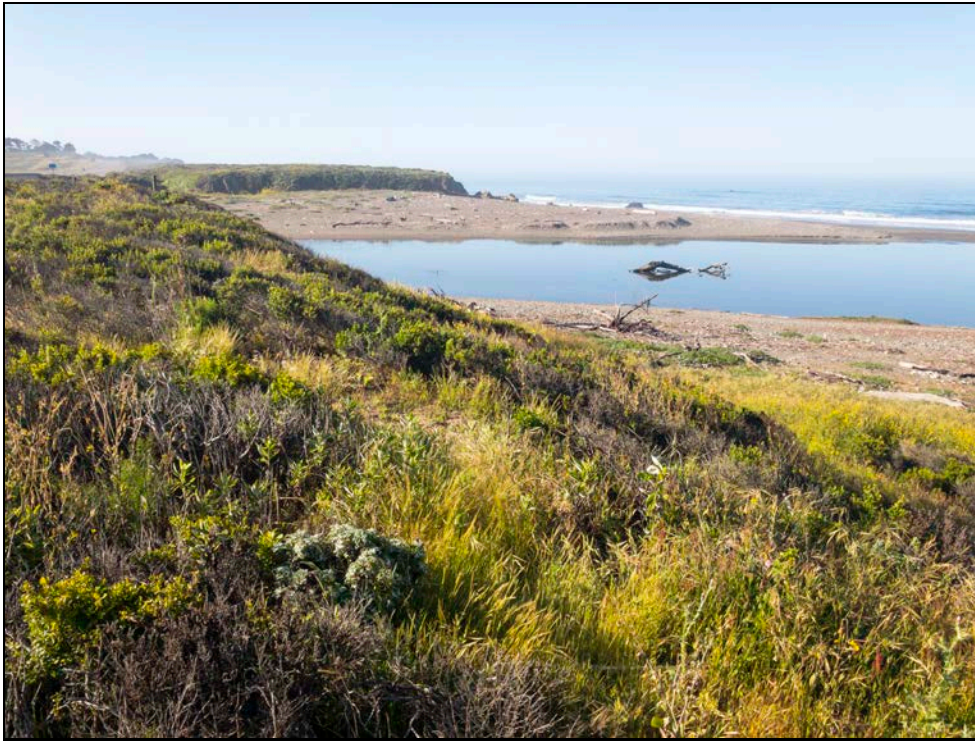


Cleveland Biological	
Cindy & Paul Cleveland	
	4/30/17
	8:30 AM
<u>Estuary</u>	
Comments	Sandbar breached. -1 ft rising tide.
<u>Pedestrian Bridge</u>	
Water Depth (ft)	na
Stream Width (ft)	na
Water Temp (F)	na
Species Noted	None
Stream Type	Run
Algae % Surface/Subsurface	na
Substrate	na
Substrate embededness %	na
Comments	No access
<u>Van Gordon Confluence</u>	
Water Depth (ft)	1.7
Stream Width (ft)	44.5
Water Temp (F)	55
Species Noted	None
Stream Type	Run
Algae % Surface/Subsurface	0
Substrate	Gravel and silt
Substrate embededness %	75

Comments	Stage (718) 3.07. Confluence temp 52 F.
<u>Red Legged Pool</u>	
Water Depth (ft)	2.1
Stream Width (ft)	49
Water Temp (F)	
Species Noted	None
Stream Type	Pool
Algae Surface/Subsurface (%)	0
Substrate	Gravel and silt
Substrate embededness %	75
Comments	
<u>Brine Pond</u>	
Species Noted	1 Mallard, 1 Killdeer, 4 Least sandpiper, 1 Common loon
Water Temp (F)	70
<u>General Comments</u>	
Comments	



Estuary



Estuary



Estuary



Downstream, Walking Bridge

CCSD Monitoring April 30, 2017



Upstream, Van Gordon Cr



Downstream, Van Gordon Cr

CCSD Monitoring April 30, 2017



Van Gordon Cr, Water Depth



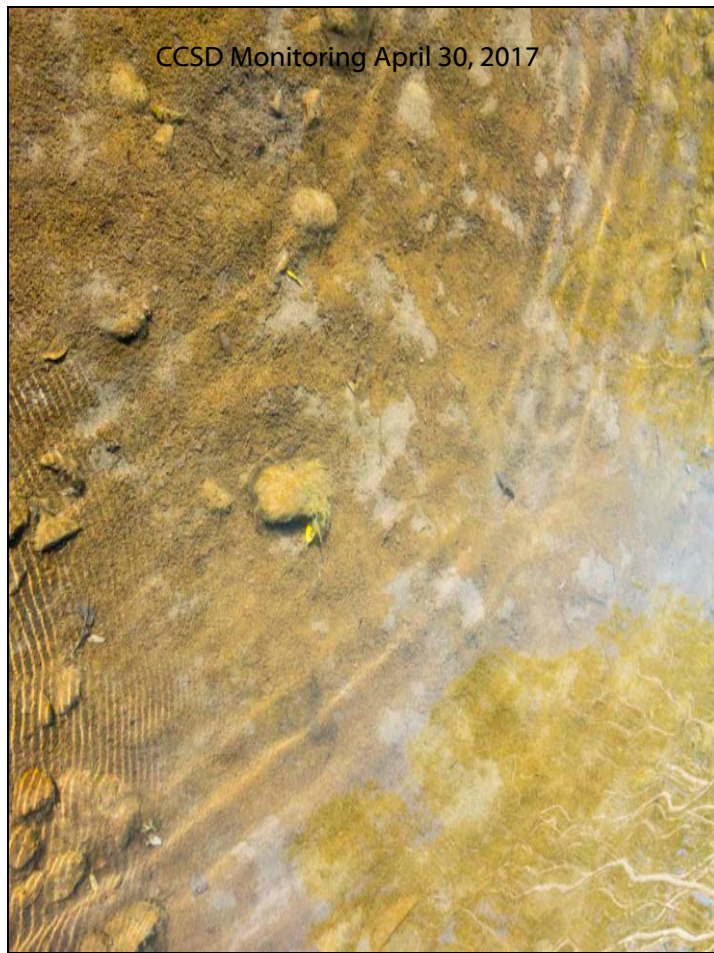
Van Gordon Cr, Water Depth



Confluence, Van Gordon Cr



Confluence, Van Gordon Cr

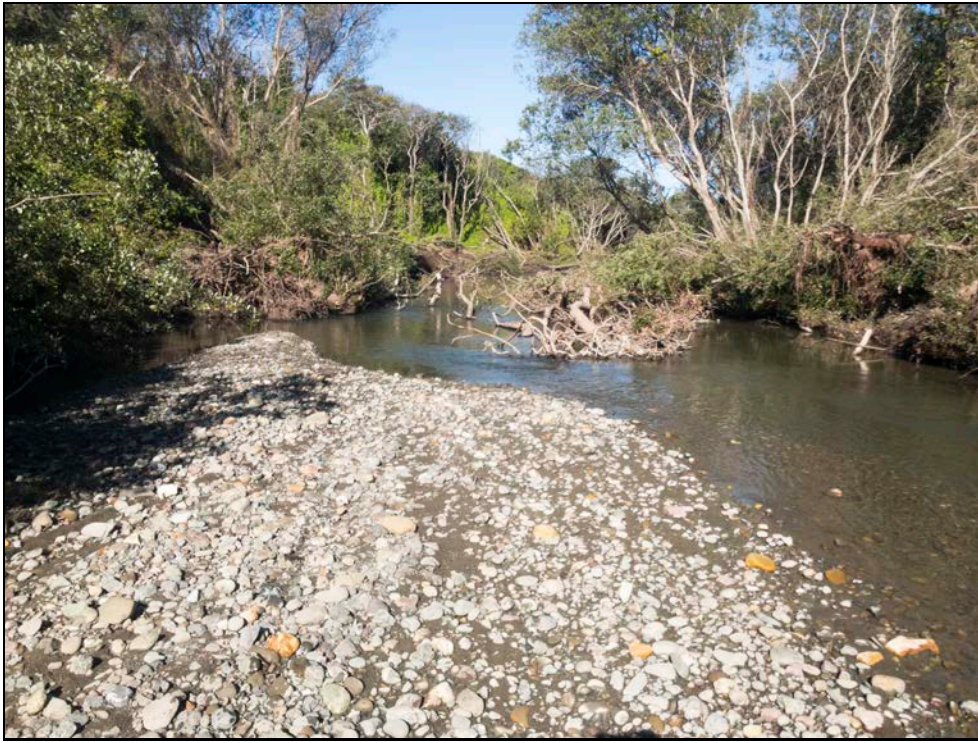


Substrate, Van Gordon Cr



Red Legged Pool, Upstream

CCSD Monitoring April 30, 2017



Downstream, Red Legged Pool



Red Legged Pool, Water Depth

CCSD Monitoring April 30, 2017



Red Legged Pool, Water Depth



Brine Pond



Brine Pond



Birds, Brine Pond, Common loon

Cleveland Biological	
Cindy & Paul Cleveland	
	5/7/17
	9:00 AM
<u>Estuary</u>	
Comments	Sandbar breached. 3.92 receding tide.
<u>Pedestrian Bridge</u>	
Water Depth (ft)	na
Stream Width (ft)	na
Water Temp (F)	na
Species Noted	None
Stream Type	Run
Algae % Surface/Subsurface	na
Substrate	na
Substrate embededness %	na
Comments	No access
<u>Van Gordon Confluence</u>	
Water Depth (ft)	3.3
Stream Width (ft)	57.5
Water Temp (F)	54
Species Noted	None
Stream Type	Run
Algae % Surface/Subsurface	0
Substrate	Gravel and silt
Substrate embededness %	75

Comments	Stage (718) 2.98. Confluence temp 52 F. Stickleback in Van Gordon.
<u>Red Legged Pool</u>	
Water Depth (ft)	2.7
Stream Width (ft)	49.5
Water Temp (F)	
Species Noted	None
Stream Type	Pool
Algae Surface/Subsurface (%)	0
Substrate	Gravel and silt
Substrate embededness %	75
Comments	No gravel bar.
<u>Brine Pond</u>	
Species Noted	1 Mallard, 1 Killdeer
Water Temp (F)	68
<u>General Comments</u>	
Comments	Weed whacking at pond. .25 " rain, Central coast tree service employees have observed bobcats preying on birds

CCSD Monitoring May 7, 2017



Estuary



Estuary

CCSD Monitoring May 7, 2017



Estuary



Downstream, Walking Bridge

CCSD Monitoring May 7, 2017



Upstream, Van Gordon Cr



Downstream, Van Gordon Cr

CCSD Monitoring May 7, 2017



Confluence, Van Gordon Cr



Confluence, Van Gordon Cr

CCSD Monitoring May 7, 2017



Van Gordon Cr, Water Depth



Van Gordon Cr, Water Depth

CCSD Monitoring May 7, 2017



Red Legged Pool, Upstream



Downstream, Red Legged Pool

CCSD Monitoring May 7, 2017



Red Legged Pool, Water Depth



Red Legged Pool, Water Depth



Brine Pond



Brine Pond

Cleveland Biological	
Cindy & Paul Cleveland	
	5/14/17
	9:30 AM
<u>Estuary</u>	
Comments	Sandbar breached. .0.38 rising tide.
<u>Pedestrian Bridge</u>	
Water Depth (ft)	na
Stream Width (ft)	na
Water Temp (F)	na
Species Noted	None
Stream Type	Run
Algae % Surface/Subsurface	na
Substrate	na
Substrate embededness %	na
Comments	No access
<u>Van Gordon Confluence</u>	
Water Depth (ft)	1.8
Stream Width (ft)	48.5
Water Temp (F)	56
Species Noted	Mallard w/8 ducklings
Stream Type	Run
Algae % Surface/Subsurface	75/0
Substrate	Gravel and silt
Substrate embededness %	75

Comments	Stage (718) 2.92. Confluence temp 52 F. Stickleback in Van Gordon.
<u>Red Legged Pool</u>	
Water Depth (ft)	2.2
Stream Width (ft)	48.5
Water Temp (F)	
Species Noted	Stickleback
Stream Type	Pool
Algae Surface/Subsurface (%)	0
Substrate	Gravel and silt
Substrate embededness %	75
Comments	Large alge bloom.
<u>Brine Pond</u>	
Species Noted	1 Mallard
Water Temp (F)	69
<u>General Comments</u>	
Comments	



Estuary



Estuary

CCSD Monitoring May 14, 2017



Estuary



Downstream, Walking Bridge

CCSD Monitoring May 14, 2017



Upstream, Van Gordon Cr



Downstream, Van Gordon Cr

CCSD Monitoring May 14, 2017



Confluence, Van Gordon Cr

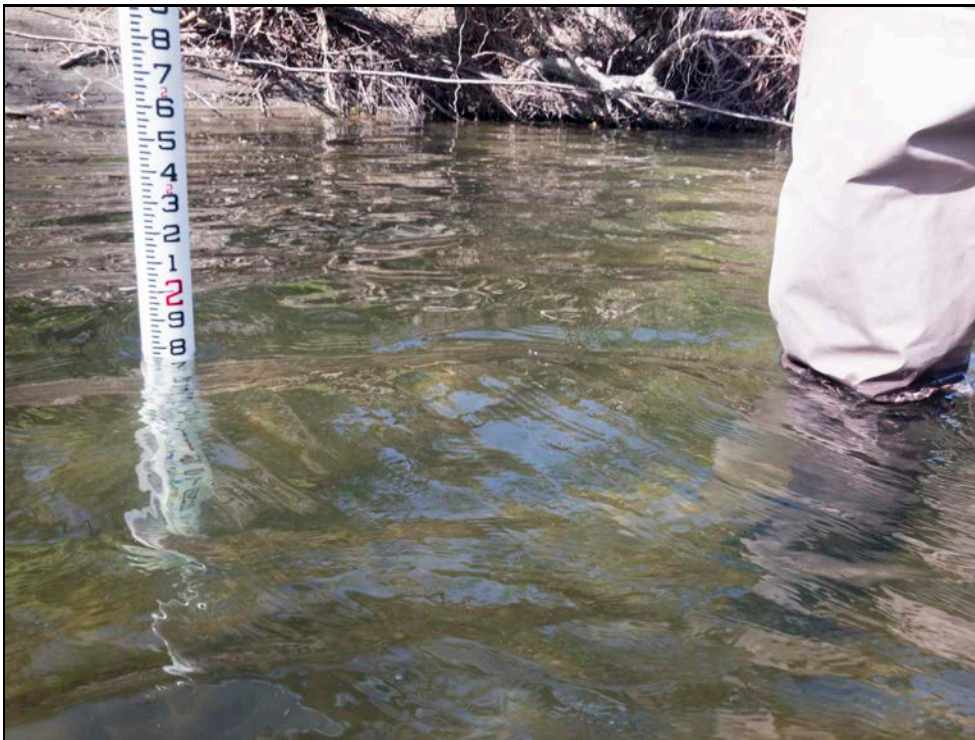


Confluence, Van Gordon Cr

CCSD Monitoring May 14, 2017

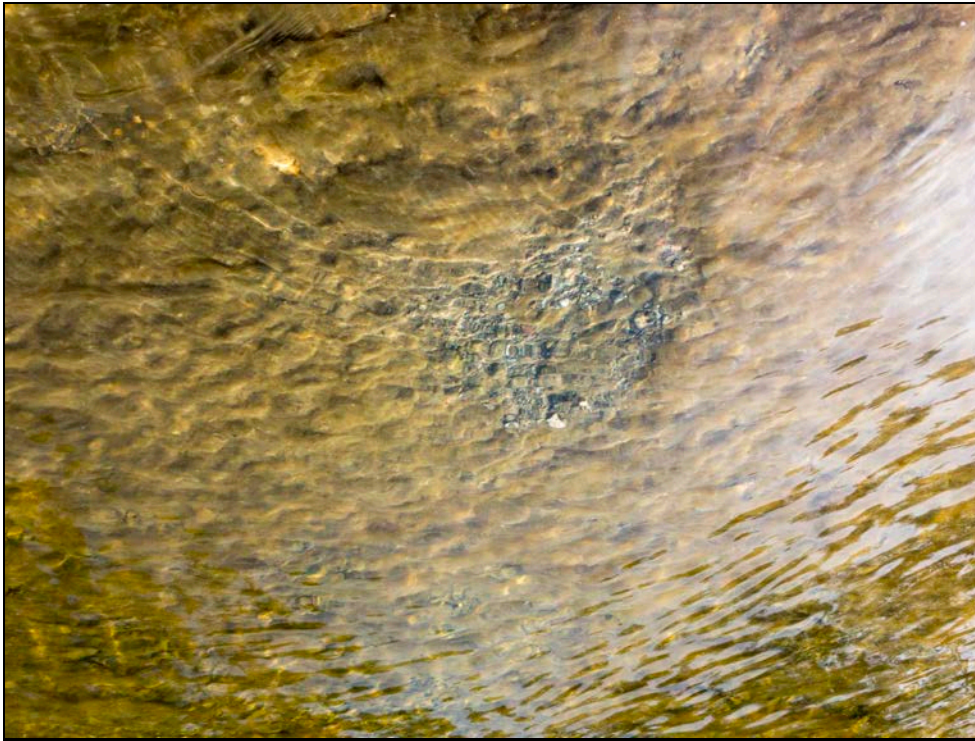


Van Gordon Cr, Water Depth



Van Gordon Cr, Water Depth

CCSD Monitoring May 14, 2017



Substrate, Van Gordon Cr



Red Legged Pool, Upstream

CCSD Monitoring May 14, 2017



Downstream, Red Legged Pool



Red Legged Pool, Water Depth

CCSD Monitoring May 14, 2017



Red Legged Pool, Water Depth



Brine Pond



Brine Pond

Cleveland Biological	
Cindy & Paul Cleveland	
	5/21/17
<u>Estuary</u>	
Comments	Sandbar breached. 2.1 receding tide.
<u>Pedestrian Bridge</u>	
Water Depth (ft)	na
Stream Width (ft)	na
Water Temp (F)	na
Species Noted	None
Stream Type	Run
Algae % Surface/Subsurface	na
Substrate	na
Substrate embededness %	na
Comments	No access
<u>Van Gordon Confluence</u>	
Water Depth (ft)	1.6
Stream Width (ft)	45
Water Temp (F)	60
Species Noted	4 Mallard
Stream Type	Run
Algae % Surface/Subsurface	0/75
Substrate	Gravel and silt
Substrate embededness %	75

Comments	Stage (718) 2.85. Confluence temp 54 F. Stickleback in Van Gordon.
<u>Red Legged Pool</u>	
Water Depth (ft)	2.1
Stream Width (ft)	45.5
Water Temp (F)	
Species Noted	Stickleback
Stream Type	Pool
Algae Surface/Subsurface (%)	0/75
Substrate	Gravel and silt
Substrate embededness %	75
Comments	
<u>Brine Pond</u>	
Species Noted	2 Mallard, 1 Great blue heron
Water Temp (F)	74
<u>General Comments</u>	
Comments	



Estuary



Estuary



Estuary



Estuary

CCSD Monitoring May 21, 2017

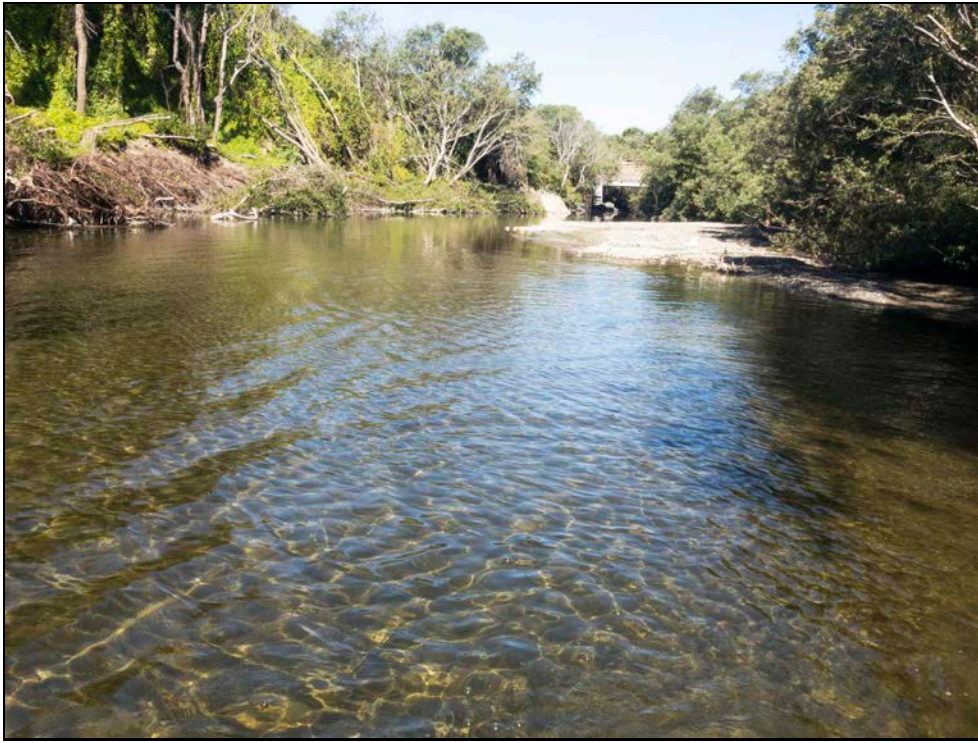


Downstream, Walking Bridge



Upstream, Van Gordon Cr

CCSD Monitoring May 21, 2017



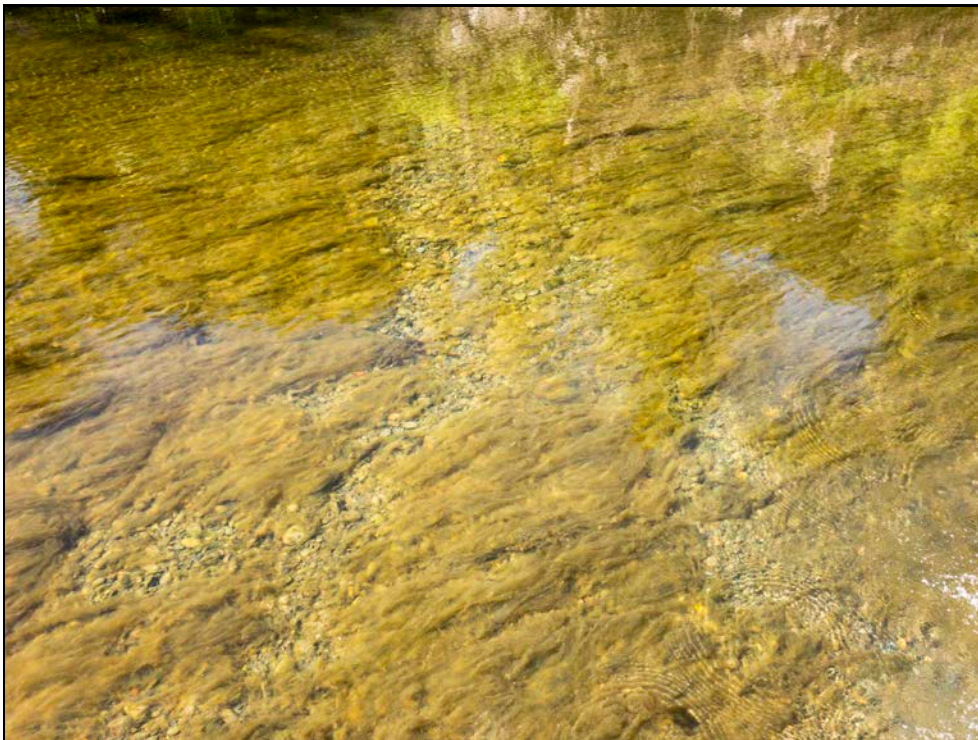
Downstream, Van Gordon Cr



Confluence, Van Gordon Cr



Confluence, Van Gordon Cr



Substrate, Van Gordon Cr

CCSD Monitoring May 21, 2017



Van Gordon Cr, Water Depth



Van Gordon Cr, Water Depth

CCSD Monitoring May 21, 2017



Red Legged Pool, Upstream



Downstream, Red Legged Pool

CCSD Monitoring May 21, 2017



Fish, Red Legged Pool, Threespine stickleback



Red Legged Pool, Water Depth

CCSD Monitoring May 21, 2017



Red Legged Pool, Water Depth



Brine Pond



Brine Pond

Cleveland Biological	
Cindy & Paul Cleveland	
	5/28/17
<u>Estuary</u>	
Comments	Sandbar not breached. 0.6 rising tide.
<u>Pedestrian Bridge</u>	
Water Depth (ft)	na
Stream Width (ft)	na
Water Temp (F)	na
Species Noted	None
Stream Type	Run
Algae % Surface/Subsurface	na
Substrate	na
Substrate embededness %	na
Comments	No access
<u>Van Gordon Confluence</u>	
Water Depth (ft)	2.4
Stream Width (ft)	56.5
Water Temp (F)	58
Species Noted	None
Stream Type	Run
Algae % Surface/Subsurface	0/75
Substrate	Gravel and silt
Substrate embededness %	75

Comments	Stage (718) 2.84. Confluence temp 54 F. Stickleback in Van Gordon.
<u>Red Legged Pool</u>	
Water Depth (ft)	2.9
Stream Width (ft)	49.5
Water Temp (F)	
Species Noted	Stickleback
Stream Type	Pool
Algae Surface/Subsurface (%)	0/75
Substrate	Gravel and silt
Substrate embededness %	75
Comments	
<u>Brine Pond</u>	
Species Noted	2 Mallard, 2 European starling
Water Temp (F)	72
<u>General Comments</u>	
Comments	



Estuary



Estuary

CCSD Monitoring May 28, 2017



Estuary



Downstream, Walking Bridge

CCSD Monitoring May 28, 2017



Upstream, Van Gordon Cr



Downstream, Van Gordon Cr

CCSD Monitoring May 28, 2017



Confluence, Van Gordon Cr



Confluence, Van Gordon Cr

CCSD Monitoring May 28, 2017



Van Gordon Cr, Water Depth



Van Gordon Cr, Water Depth

CCSD Monitoring May 28, 2017



Red Legged Pool, Upstream



Downstream, Red Legged Pool

CCSD Monitoring May 28, 2017



Red Legged Pool, Substrate



Red Legged Pool, Water Depth

CCSD Monitoring May 28, 2017



Red Legged Pool, Water Depth



Brine Pond



Brine Pond

Cleveland Biological	
Cindy & Paul Cleveland	
	6/4/17
	9:00 AM
<u>Estuary</u>	
Comments	Sandbar not breached. 3.5 ft rising tide.
<u>Pedestrian Bridge</u>	
Water Depth (ft)	na
Stream Width (ft)	na
Water Temp (F)	na
Species Noted	None
Stream Type	Run
Algae % Surface/Subsurface	na
Substrate	na
Substrate embededness %	na
Comments	No access
<u>Van Gordon Confluence</u>	
Water Depth (ft)	2.1
Stream Width (ft)	49.5
Water Temp (F)	59
Species Noted	None
Stream Type	Run
Algae % Surface/Subsurface	0/75
Substrate	Gravel and silt
Substrate embededness %	75

Comments	Stage (718) 2.83. Confluence temp 54 F. Confluence becoming intermitant with no fish observed.
<u>Red Legged Pool</u>	
Water Depth (ft)	2.6
Stream Width (ft)	47
Water Temp (F)	
Species Noted	Stickleback and Speckled dace
Stream Type	Pool
Algae Surface/Subsurface (%)	0/75
Substrate	Gravel and silt
Substrate embededness %	75
Comments	
<u>Brine Pond</u>	
Species Noted	2 Mallard, 1 Killdeer, 2 European starlings
Water Temp (F)	74
<u>General Comments</u>	
Comments	

CCSD Monitoring June 4, 2017



Estuary

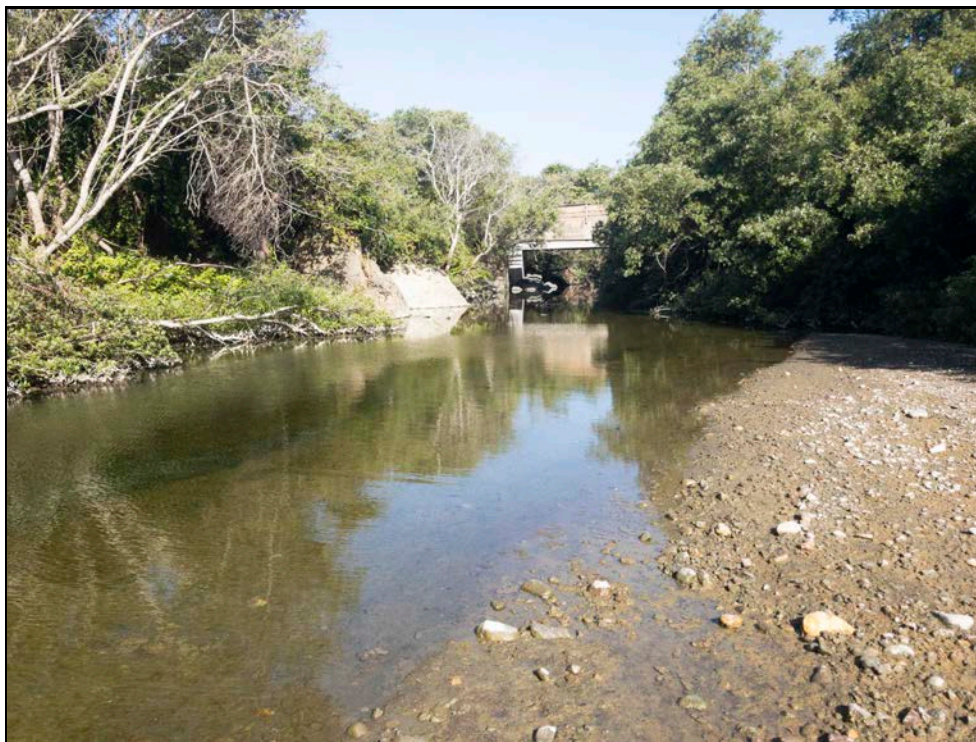


Estuary

CCSD Monitoring June 4, 2017



Estuary



Downstream, Walking Bridge

CCSD Monitoring June 4, 2017



Upstream, Van Gordon Cr



Downstream, Van Gordon Cr

CCSD Monitoring June 4, 2017



Confluence, Van Gordon Cr



Confluence, Van Gordon Cr

CCSD Monitoring June 4, 2017

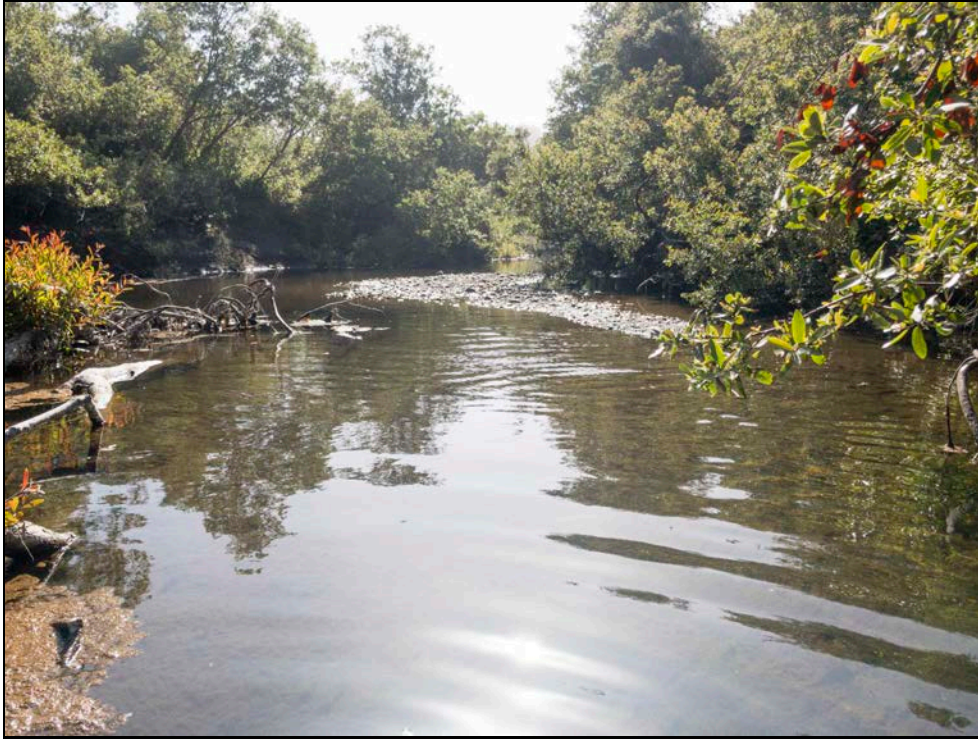


Van Gordon Cr, Water Depth



Van Gordon Cr, Water Depth

CCSD Monitoring June 4, 2017



Red Legged Pool, Upstream



Downstream, Red Legged Pool

CCSD Monitoring June 4, 2017



Red Legged Pool, Water Depth



Red Legged Pool, Water Depth

CCSD Monitoring June 4, 2017



Brine Pond



Brine Pond

Cleveland Biological	
Cindy & Paul Cleveland	
	6/11/17
	8:00 AM
<u>Estuary</u>	
Comments	Sandbar not breached.. -0.14 rising tide.
<u>Pedestrian Bridge</u>	
Water Depth (ft)	na
Stream Width (ft)	na
Water Temp (F)	na
Species Noted	None
Stream Type	Run
Algae % Surface/Subsurface	na
Substrate	na
Substrate embeddedness %	na
Comments	No access
<u>Van Gordon Confluence</u>	
Water Depth (ft)	1.8
Stream Width (ft)	48.5
Water Temp (F)	58
Species Noted	Three-spined stickleback, Speckled dace
Stream Type	Run
Algae % Surface/Subsurface	0/75
Substrate	Gravel and silt

Substrate embededness %	75
Comments	
<u>Red Legged Pool</u>	
Water Depth (ft)	2.1
Stream Width (ft)	46.5
Water Temp (F)	
Species Noted	Three-spined stickleback, Speckled dace
Stream Type	Pool
Algae Surface/Subsurface (%)	0/75
Substrate	Gravel and silt
Substrate embededness %	75
Comments	
<u>Brine Pond</u>	
Species Noted	2 Killdeer, 1 Mallard
Water Temp (F)	72
<u>General Comments</u>	
Comments	Always present Barn swallow in large numbers (50+) due to Caddis fly bloom

CCSD Monitoring June 11, 2017



Estuary



Estuary

CCSD Monitoring June 11, 2017



Estuary



Downstream, Walking Bridge

CCSD Monitoring June 11, 2017



Upstream, Van Gordon Cr



Downstream, Van Gordon Cr

CCSD Monitoring June 11, 2017



Confluence, Van Gordon Cr



Confluence, Van Gordon Cr

CCSD Monitoring June 11, 2017



Van Gordon Cr, Water Depth



Van Gordon Cr, Water Depth

CCSD Monitoring June 11, 2017



Red Legged Pool, Upstream



Downstream, Red Legged Pool

CCSD Monitoring June 11, 2017



Red Legged Pool, Water Depth



Red Legged Pool, Water Depth

CCSD Monitoring June 11, 2017



Brine Pond



Brine Pond

Cleveland Biological	
Cindy & Paul Cleveland	
	7/2/17
	11:30 AM
<u>Estuary</u>	
Comments	Sandbar not breached.
<u>Pedestrian Bridge</u>	
Water Depth (ft)	na
Stream Width (ft)	na
Water Temp (F)	na
Species Noted	None
Stream Type	Run
Algae % Surface/Subsurface	na
Substrate	na
Substrate embeddedness %	na
Comments	No access
<u>Van Gordon Confluence</u>	
Water Depth (ft)	1
Stream Width (ft)	28
Water Temp (F)	64
Species Noted	Three-spined stickleback, Speckled dace
Stream Type	Run
Algae % Surface/Subsurface	5/100
Substrate	Gravel and silt

Substrate embededness %	75
Comments	Stage (718) 2.69
<u>Red Legged Pool</u>	
Water Depth (ft)	1.3
Stream Width (ft)	31
Water Temp (F)	
Species Noted	Three-spined stickleback, Speckled dace
Stream Type	Pool
Algae Surface/Subsurface (%)	5/100
Substrate	Gravel and silt
Substrate embededness %	75
Comments	
<u>Brine Pond</u>	
Species Noted	6 Killdeer, 7 Mallard
Water Temp (F)	74
<u>General Comments</u>	
Comments	

CCSD Monitoring July 2, 2017



Estuary



Estuary

CCSD Monitoring July 2, 2017



Estuary



Downstream, Walking Bridge

CCSD Monitoring July 2, 2017



Upstream, Van Gordon Cr

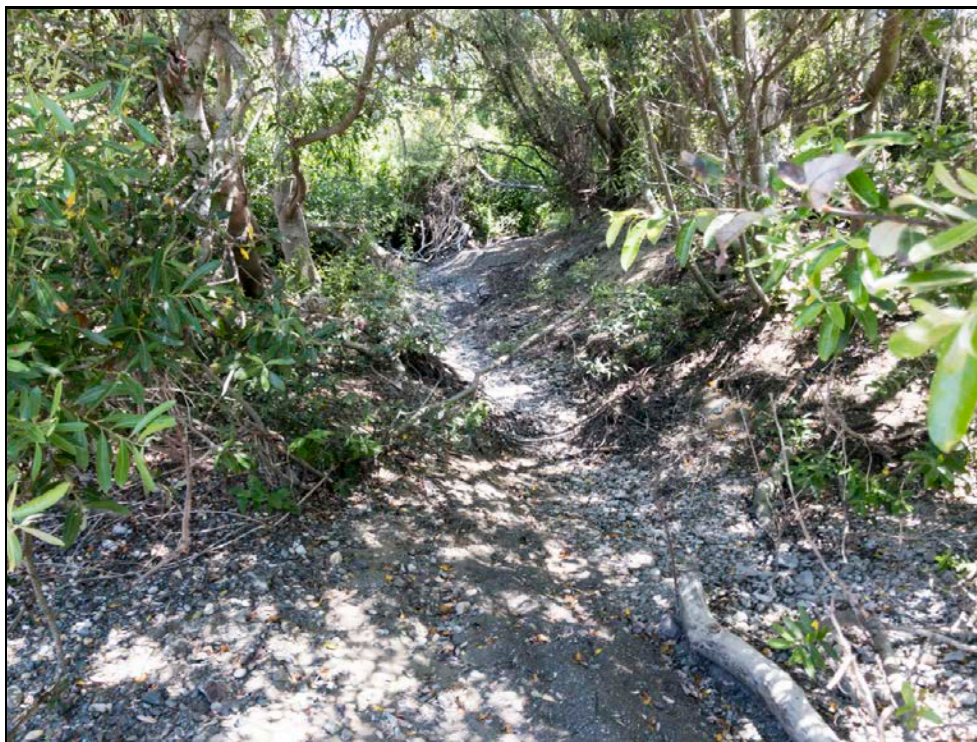


Downstream, Van Gordon Cr

CCSD Monitoring July 2, 2017



Confluence, Van Gordon Cr



Confluence, Van Gordon Cr

CCSD Monitoring July 2, 2017



Van Gordon Cr, Water Depth



Van Gordon Cr, Water Depth

CCSD Monitoring July 2, 2017



Red Legged Pool, Upstream



Downstream, Red Legged Pool

CCSD Monitoring July 2, 2017



Red Legged Pool, Water Depth



Red Legged Pool, Water Depth

CCSD Monitoring July 2, 2017



Brine Pond



Brine Pond

CCSD Weekly Creek Monitoring

July 2017

Weekly monitoring of San Simeon Creek, Van Gordon Creek, the San Simeon Estuary, and the Evaporation Pond



by
Cleveland Biological
535 Cuesta Place
Arroyo Grande, CA 93420
805.234.3759

Cleveland Biological Cindy & Paul Cleveland					
	7/30/17	7/22/17	7/17/17	7/9/17	7/2/17
	9:30	10:30 AM	9:00 AM	2:00 PM	11:30 AM
<u>Estuary</u>					
Comments	Sandbar not breached.	Sandbar not breached.	Sandbar not breached.	Sandbar not breached.	Sandbar not breached.
<u>Pedestrian Bridge</u>					
Water Depth (ft)	na	na	na	na	na
Stream Width (ft)	na	na	na	na	na
Water Temp (F)	na	na	na	na	na
Species Noted	None	None	None	None	None
Stream Type	Run	Run	Run	Run	Run
Algae % Surface/Subsurface	na	na	na	na	na
Substrate	na	na	na	na	na
Substrate embeddedness %	na	na	na	na	na
Comments	No access	No access	No access	No access	No access
<u>Van Gordon Confluence</u>					
Water Depth (ft)	0.7	0.9	1	1.3	1
Stream Width (ft)	22.5	26.5	22.5	30.5	28
Water Temp (F)	60	62	61	65	64
Species Noted	Kingfisher		Three-spined stickleback, Speckled dace	Three-spined stickleback, Speckled dace	Three-spined stickleback, Speckled dace
Stream Type	Run	Run	Run	Run	Run
Algae % Surface/Subsurface	5/100	5/100	5/100	5/100	5/100
Substrate	Gravel and silt	Gravel and silt	Gravel and silt	Gravel and silt	Gravel and silt
Substrate embeddedness %	75	75	75	75	75
Comments	Stage (718) 2.33	Stage (718) 2.58	Stage (718) 2.64	Stage (718) 2.66	Stage (718) 2.69
<u>Red Legged Pool</u>					
Water Depth (ft)	1	1.3	1.2	1.6	1.3
Stream Width (ft)	29	32	32	34	31
Water Temp (F)					
Species Noted			Three-spined stickleback, Speckled dace, Pacific tree frog	Three-spined stickleback, Speckled dace	Three-spined stickleback, Speckled dace
Stream Type	Pool	Pool	Pool	Pool	Pool
Algae Surface/Subsurface (%)	10/100	5/100	5/100	5/100	5/100
Substrate	Gravel and silt	Gravel and silt	Gravel and silt	Gravel and silt	Gravel and silt
Substrate embeddedness %	75	75	75	75	75
Comments					
<u>Brine Pond</u>					
Species Noted	swallows very active over invert hatch	none	1 Killdeer	1 Killdeer, 1 grebe	6 Killdeer, 7 Mallard
Water Temp (F)	76	76	76	80	74
<u>General Comments</u>					
Comments					

CCSD Monitoring July 2, 2017



Estuary



Estuary

CCSD Monitoring July 2, 2017



Estuary



Downstream, Walking Bridge

CCSD Monitoring July 2, 2017



Upstream, Van Gordon Cr



Downstream, Van Gordon Cr

CCSD Monitoring July 2, 2017



Confluence, Van Gordon Cr



Confluence, Van Gordon Cr

CCSD Monitoring July 2, 2017



Van Gordon Cr, Water Depth



Van Gordon Cr, Water Depth

CCSD Monitoring July 2, 2017



Red Legged Pool, Upstream



Downstream, Red Legged Pool

CCSD Monitoring July 2, 2017



Red Legged Pool, Water Depth



Red Legged Pool, Water Depth

CCSD Monitoring July 2, 2017



Brine Pond



Brine Pond

CCSD Monitoring July 9, 2017



Estuary



Estuary

CCSD Monitoring July 9, 2017



Estuary



Downstream, Walking Bridge

CCSD Monitoring July 9, 2017



Upstream, Van Gordon Cr



Downstream, Van Gordon Cr

CCSD Monitoring July 9, 2017



Confluence, Van Gordon Cr



Confluence, Van Gordon Cr

CCSD Monitoring July 9, 2017



Van Gordon Cr, Water Depth



Van Gordon Cr, Water Depth

CCSD Monitoring July 9, 2017



Red Legged Pool, Upstream



Downstream, Red Legged Pool

CCSD Monitoring July 9, 2017



Red Legged Pool, Water Depth



Red Legged Pool, Water Depth

CCSD Monitoring July 9, 2017



Brine Pond



Brine Pond

CCSD Monitoring July 17, 2017



Estuary



Estuary

CCSD Monitoring July 17, 2017



Estuary



Downstream, Walking Bridge

CCSD Monitoring July 17, 2017



Upstream, Van Gordon Cr

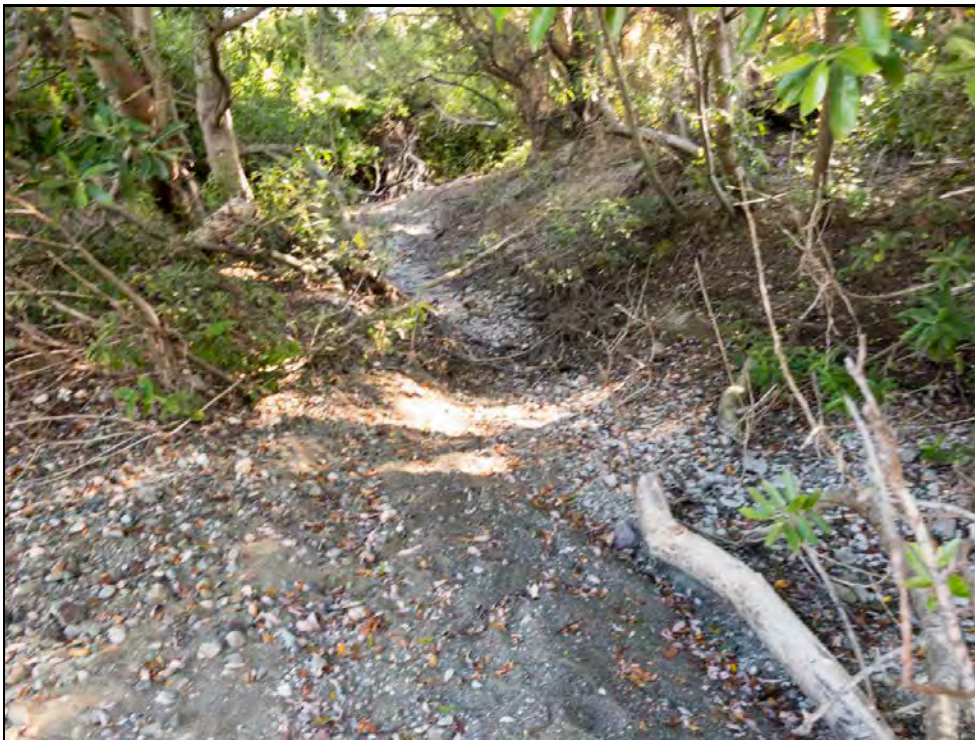


Downstream, Van Gordon Cr

CCSD Monitoring July 17, 2017



Confluence, Van Gordon Cr

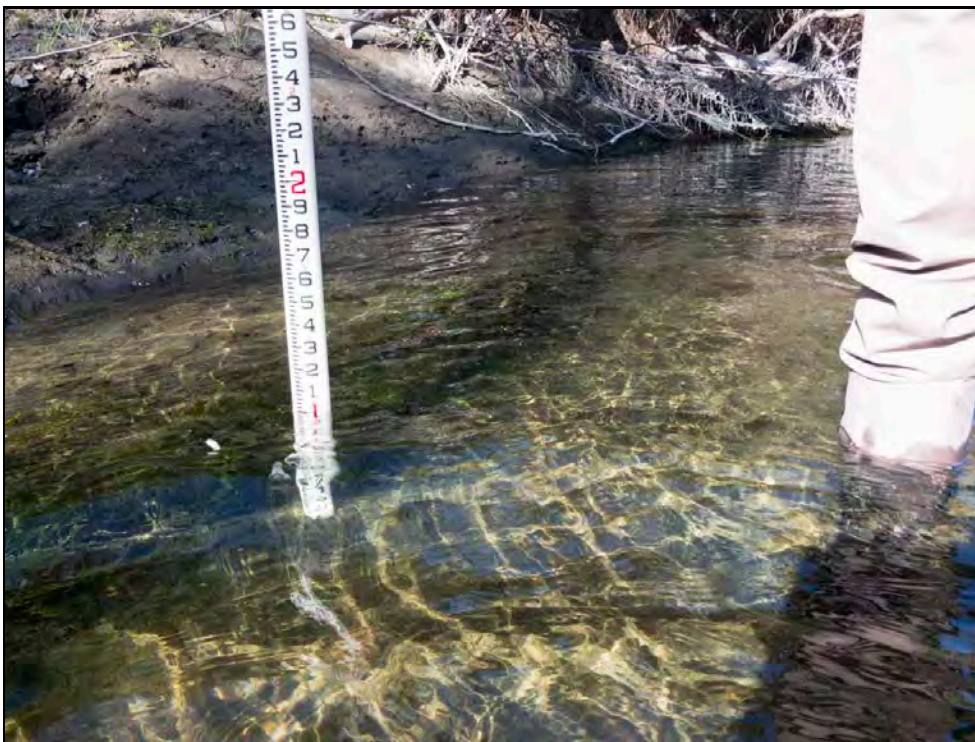


Confluence, Van Gordon Cr

CCSD Monitoring July 17, 2017



Van Gordon Cr, Water Depth



Van Gordon Cr, Water Depth

CCSD Monitoring July 17, 2017



Red Legged Pool, Upstream



Downstream, Red Legged Pool

CCSD Monitoring July 17, 2017



Red Legged Pool, Water Depth



Red Legged Pool, Water Depth

CCSD Monitoring July 17, 2017



Pacific tree frog, Red Legged Pool



Pacific tree frog, Red Legged Pool

CCSD Monitoring July 17, 2017



Brine Pond



Brine Pond

CCSD Monitoring July 22, 2017



Estuary



Estuary

CCSD Monitoring July 22, 2017



Estuary



Downstream, Walking Bridge

CCSD Monitoring July 22, 2017



Upstream, Van Gordon Cr



Downstream, Van Gordon Cr

CCSD Monitoring July 22, 2017



Confluence, Van Gordon Cr



Confluence, Van Gordon Cr

CCSD Monitoring July 22, 2017



Van Gordon Cr, Water Depth



Van Gordon Cr, Water Depth

CCSD Monitoring July 22, 2017



Red Legged Pool, Upstream



Red Legged Pool

CCSD Monitoring July 22, 2017



Red Legged Pool, Water Depth



Red Legged Pool, Water Depth

CCSD Monitoring July 22, 2017



Brine Pond



Brine Pond

CCSD Monitoring July 30, 2017



Estuary



Estuary

CCSD Monitoring July 30, 2017



Estuary



Downstream, Walking Bridge

CCSD Monitoring July 30, 2017



Upstream, Van Gordon Cr



Downstream, Van Gordon Cr

CCSD Monitoring July 30, 2017



Substrate, Van Gordon Cr



Van Gordon Cr, Water Depth

CCSD Monitoring July 30, 2017



Van Gordon Cr, Water Depth



Red Legged Pool, Upstream

CCSD Monitoring July 30, 2017



Downstream, Red Legged Pool



Red Legged Pool, Water Depth

CCSD Monitoring July 30, 2017



Red Legged Pool, Water Depth



Brine Pond

CCSD Monitoring July 30, 2017



Brine Pond



Brine Pond, Invertebrates

CCSD Monitoring July 30, 2017



Brine Pond, Invertebrates