

**Cambria Community Service District  
Adaptive Management Plan  
Biological Bi-Monthly Monitoring Report**

---



*Prepared by*


Cleveland Biological, LLC  
cindycleve@gmail.com  
805.234.3759

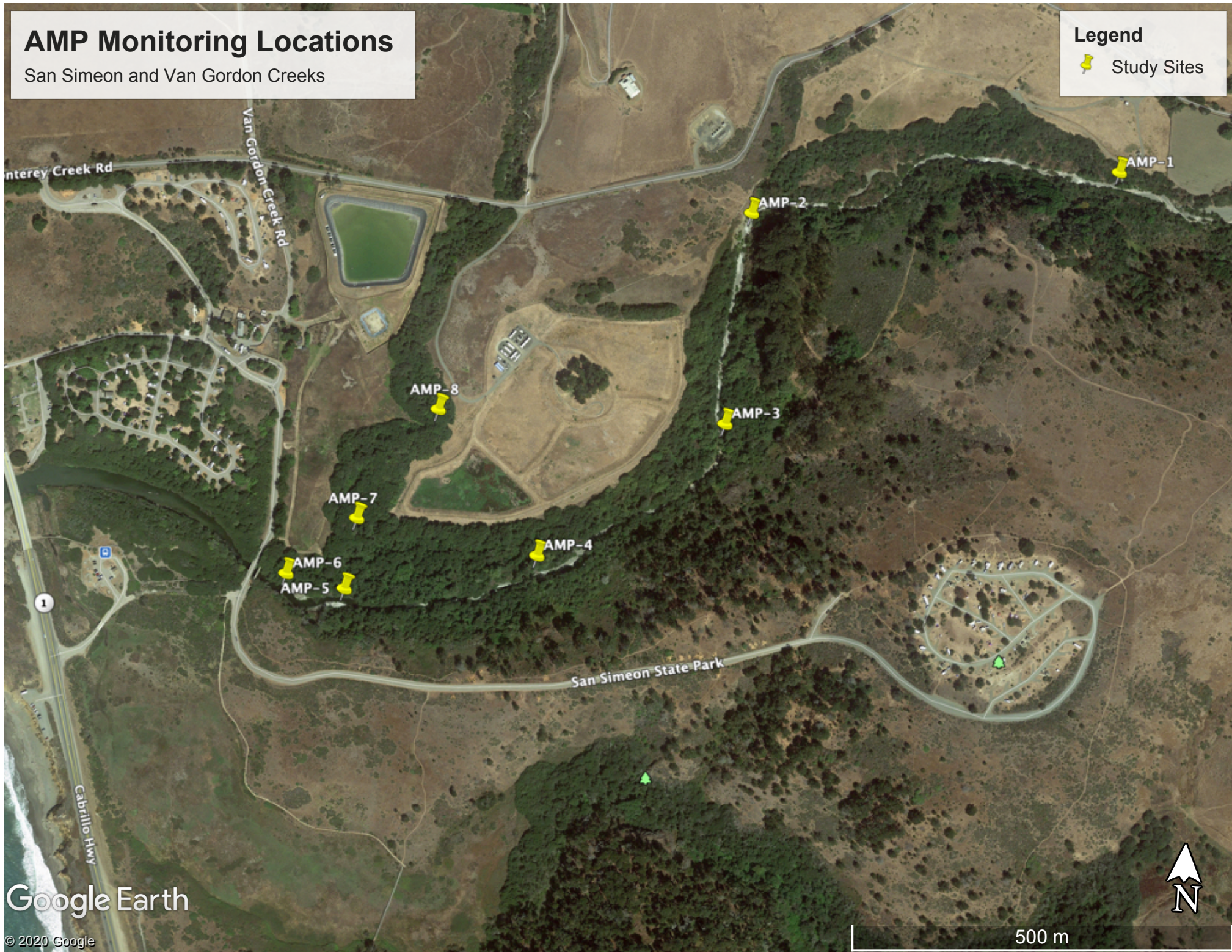
January 16, 2022

# AMP Monitoring Locations

San Simeon and Van Gordon Creeks

## Legend

 Study Sites



Google Earth

© 2020 Google

500 m



	<u>Site 1</u>	<u>Site 2</u>	<u>Site 3</u>	<u>Site 4</u>	<u>Site 5</u>	<u>Site 7*</u>	<u>Site 8</u>
<b>Water Quality</b>							
Temperature (F)	57.7	57.1	56.7	56.8	56.3	dry	na
Dissolved Oxygen (%)	96	95	93.5	88.4	101	dry	na
Dissolved Oxygen (ppm)	9.82	9.78	9.68	9.17	9.32	dry	na
Total Dissolved Solids (mg/L)	360	359	363	398	20,946	dry	na
Salinity (ppt)	0.27	0.24	0.27	0.30	20.15	dry	na
<b>Water Guage</b>							
Water Level (ft)				na	na		
Site 4 guage is in pool approx.50 m upstream of Site 4 near right bank. Site 5 guage is at site on left bank.							
<b>Species Observed</b>	Only a few Stickleback below Site 4 and one likely Prickly sculpin below Site 2.						
<b>Comments</b>	The rain and high flows caused several changes - the deepest pool above Site 4 has filled into a run. The large tree that fell at Site 4 is gone, and both stream gauges at Sites 4 and 5 are gone. Between 12/13/21 and 12/29/21 there was 8.07 inches of rainfall recorded.						
<b>Location Descriptions</b>	Trail by SS-1	Downstream of rock pool	Draw a line from 9P7 along road to the creek	Stream flow starts/ends	Upstream of Van Gordon confluence	Van Gordon accessed at MW-4	Van Gordon accessed from AWTP
<b>GPS</b>	35°36'0.23"N	35°35'57.55"N	35°35'48.09"N	35°35'41.88"N	35°35'40.00"N	35°35'43.10"N	35°35'48.06"N
	121° 6'33.42"W	121° 6'53.39"W	121° 6'54.29"W	121° 7'4.04"W	121° 7'14.25"W	121° 7'13.85"W	121° 7'9.81"W
	*Site 6 is on State Parks property and is not accessible at this time.						
<b>9P7 Soil Moisture †</b>							
North (%)	16.3						
East (%)	12.9						
South (%)	11.8						
West (%)	13.3						
†Moisture measured on each side of well casing. Max reading is 50%.							

# CCSD Monitoring January 16, 2022



Site 1



Site 1



Site 1



Site 1

# CCSD Monitoring January 16, 2022



Site 2



Site 2



Site 2



Site 2

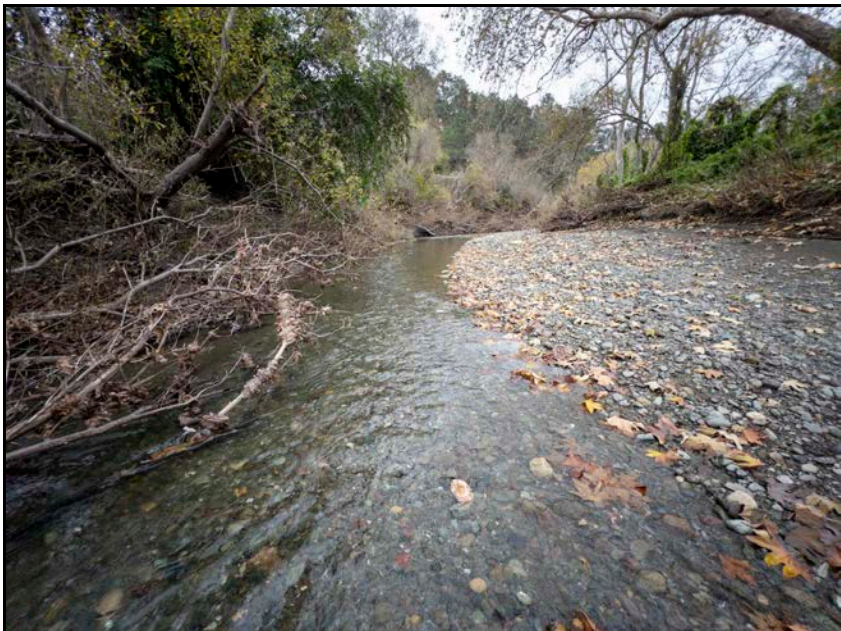
# CCSD Monitoring January 16, 2022



Site 3



Site 3



Site 3



Site 3

# CCSD Monitoring January 16, 2022



Site 4



Site 4



Site 4



Site 4



# CCSD Monitoring January 16, 2022



Site 5



Site 5



Site 5



Site 5

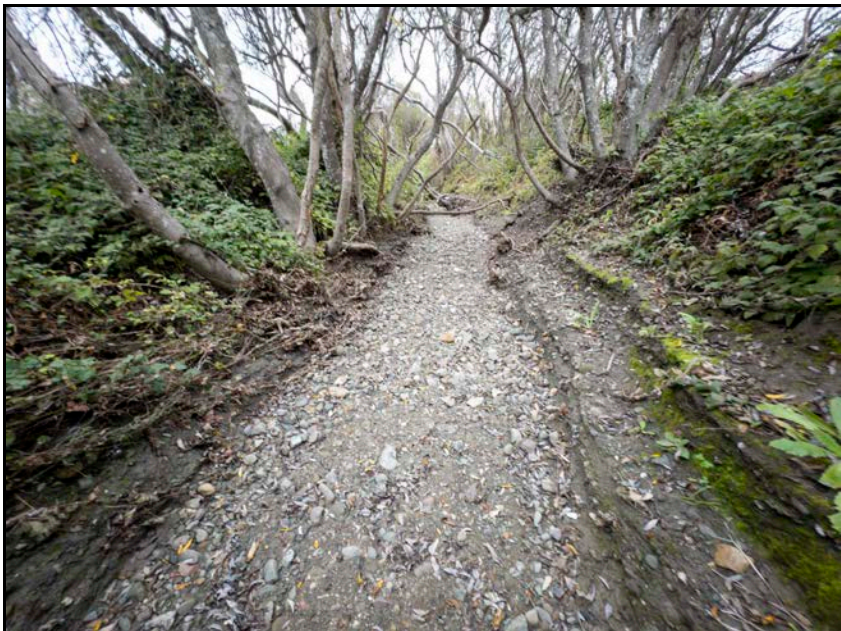
# CCSD Monitoring January 16, 2022



Site 7



Site 7



Site 7



Site 7

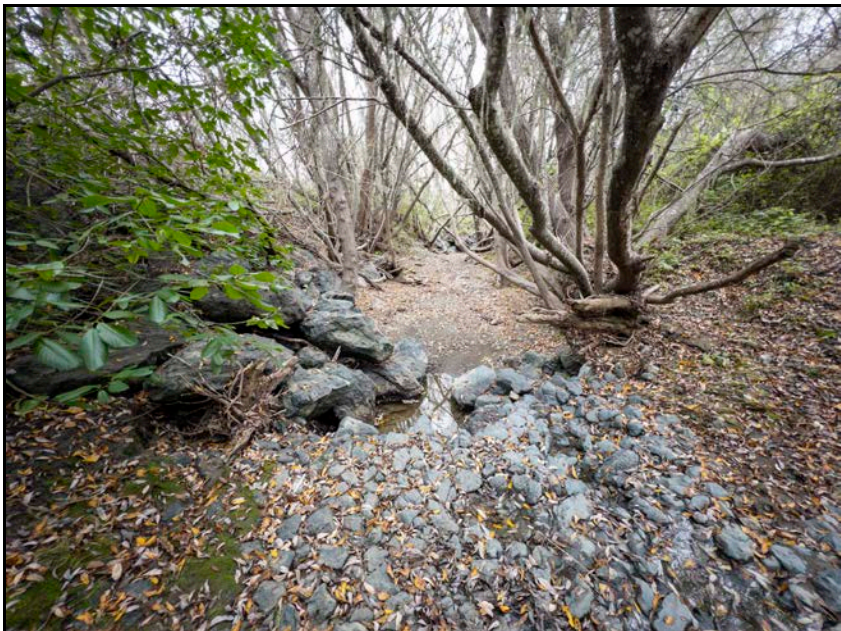
# CCSD Monitoring January 16, 2022



Site 8



Site 8



Site 8

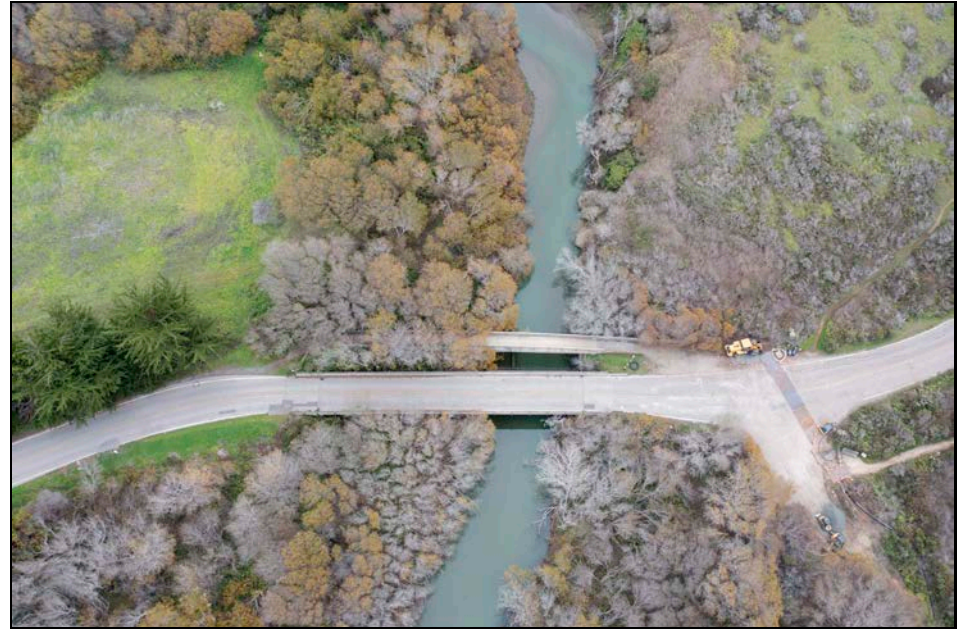


Site 8

# CCSD Monitoring January 16, 2022



9P7 Well



Walking Bridge PS-1



Estuary PS-2

# CCSD Monitoring January 16, 2022



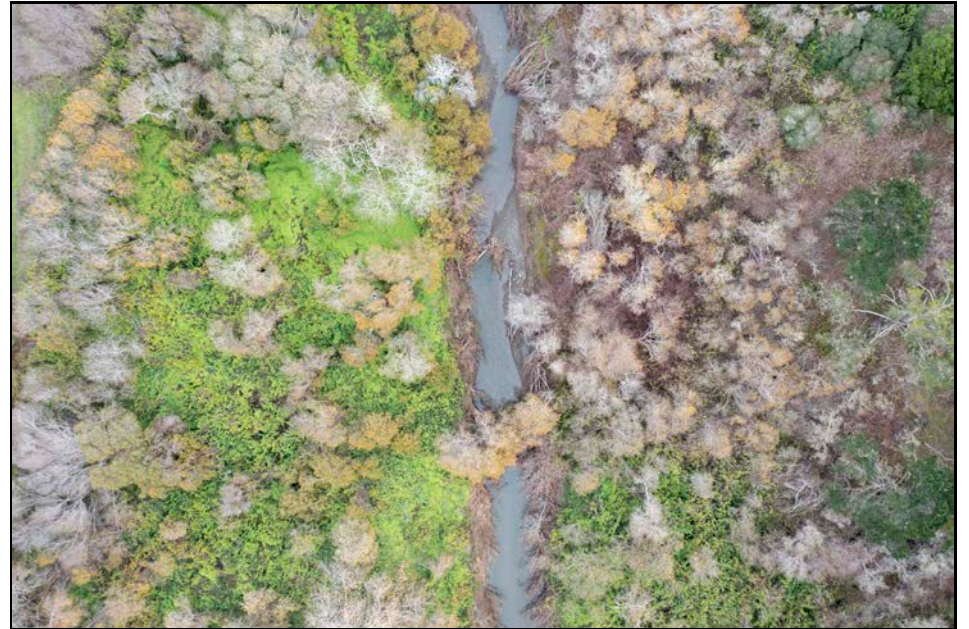
Site 1 Aerial



Site 2 Aerial



Site 3 Aerial



Site 4 Aerial

# CCSD Monitoring January 16, 2022



Site 5 Aerial

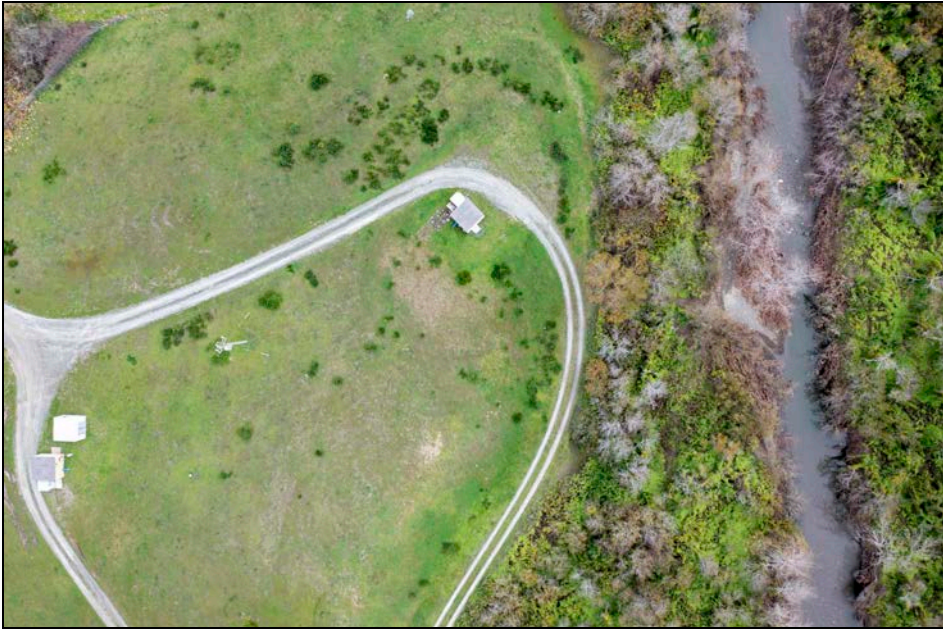


Site 7 Aerial



Site 8 Aerial

# CCSD Monitoring January 16, 2022



Site 1 Riparian Left



Site 1 Riparian Right



Site 2 Riparian Left



Site 2 Riparian Right

# CCSD Monitoring January 16, 2022



Site 3 Riparian Left



Site 3 Riparian Right



Site 4 Riparian Left



Site 4 Riparian Right



# CCSD Monitoring January 16, 2022



Site 5 Aerial Riparian Left



Site 5 Riparian Right



Site 7 Aerial Riparian Left



Site 7 Riparian Right

# CCSD Monitoring January 16, 2022



Site 8 Aerial Riparian Left & Right