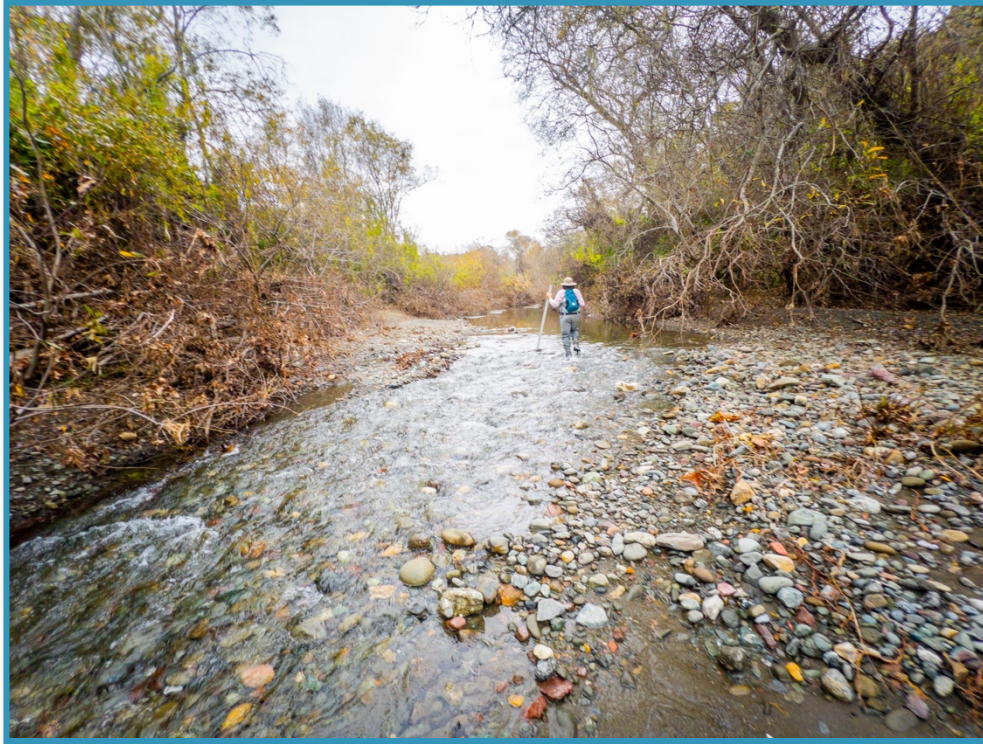


Cambria Community Service District Adaptive Management Plan Biological Bi-Monthly Monitoring Report



Prepared by


Cleveland Biological, LLC
cindycleve@gmail.com
805.234.3759

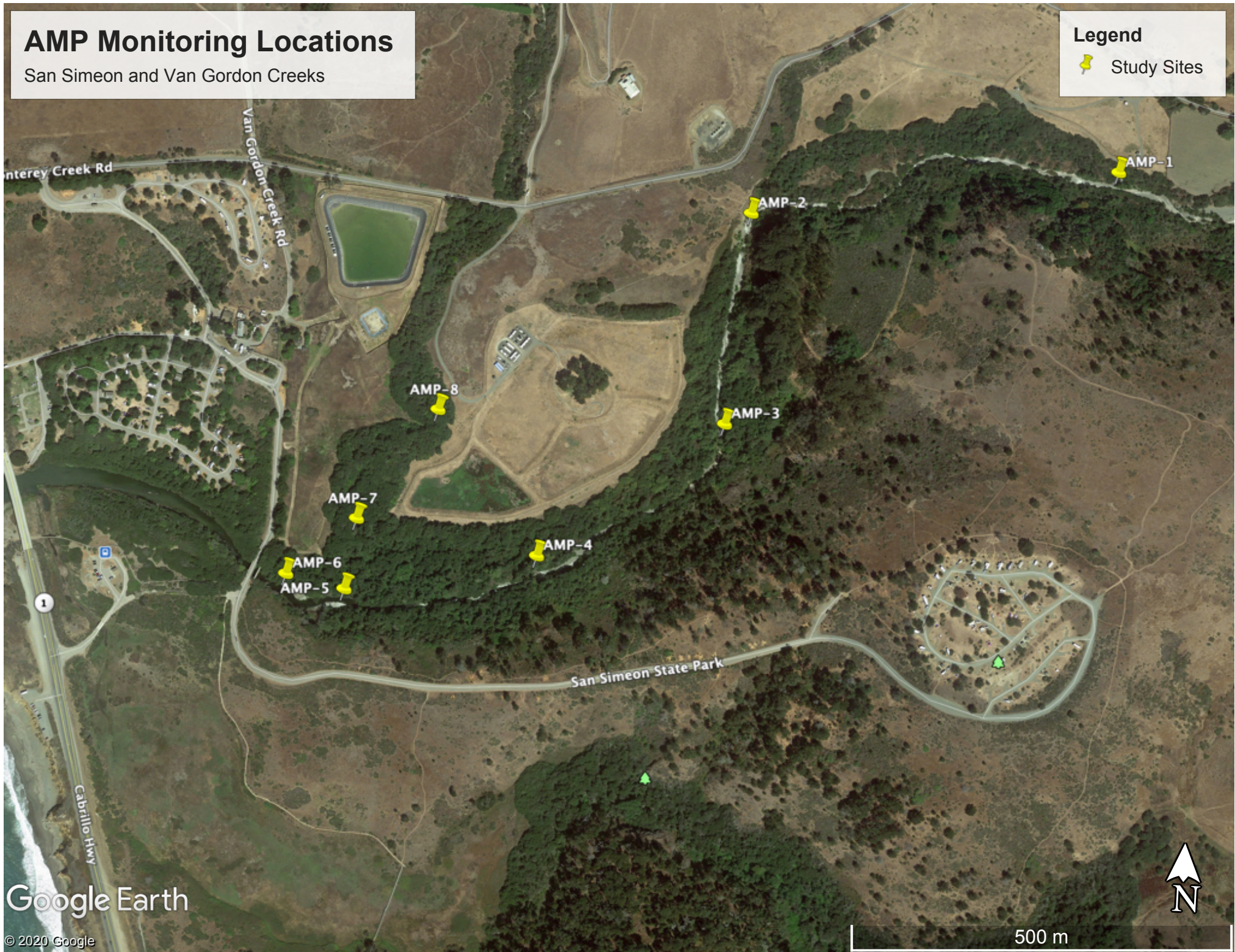
August 4, 2022

AMP Monitoring Locations

San Simeon and Van Gordon Creeks

Legend

 Study Sites



Google Earth

© 2020 Google

500 m



	<u>Site 1</u>	<u>Site 2</u>	<u>Site 3</u>	<u>Site 4</u>	<u>Site 5</u>	<u>Site 7*</u>	<u>Site 8</u>
Water Quality							
Temperature (F)	dry	dry	dry	61.9	63.1	dry	dry
Dissolved Oxygen (%)	dry	dry	dry	47.3	75.7	dry	dry
Dissolved Oxygen (ppm)	dry	dry	dry	4.6	7.25	dry	dry
Total Dissolved Solids (mg/L)	dry	dry	dry	709	828	dry	dry
Salinity (ppt)	dry	dry	dry	0.54	0.64	dry	dry
Water Guage							
Water Level (ft)				na	na		
Site 4 guage is in pool approx.50 m upstream of Site 4 near right bank. Site 5 guage is at site on left bank.							
Species Observed	One Western pond turtle observed downstream of Site 5. Stickleback @ Sites 4 & 5.						
Comments							
Location Descriptions	Trail by SS-1	Downstream of rock pool	Draw a line from 9P7 along road to the creek	Stream flow starts/ends	Upstream of Van Gordon confluence	Van Gordon accessed at MW-4	Van Gordon accessed from AWTP
GPS	35°36'0.23"N	35°35'57.55"N	35°35'48.09"N	35°35'41.88"N	35°35'40.00"N	35°35'43.10"N	35°35'48.06"N
	121° 6'33.42"W	121° 6'53.39"W	121° 6'54.29"W	121° 7'4.04"W	121° 7'14.25"W	121° 7'13.85"W	121° 7'9.81"W
*Site 6 is on State Parks property and is not accessible at this time.							
9P7 Soil Moisture †							
North (%)	3.9						
East (%)	0.0						
South (%)	0.0						
West (%)	0.0						
†Moisture measured on each side of well casing. Max reading is 50%.							

CCSD Monitoring August 4, 2022



Site 1



Site 1



Site 1



Site 1

CCSD Monitoring August 4, 2022



Site 2



Site 2



Site 2



Site 2

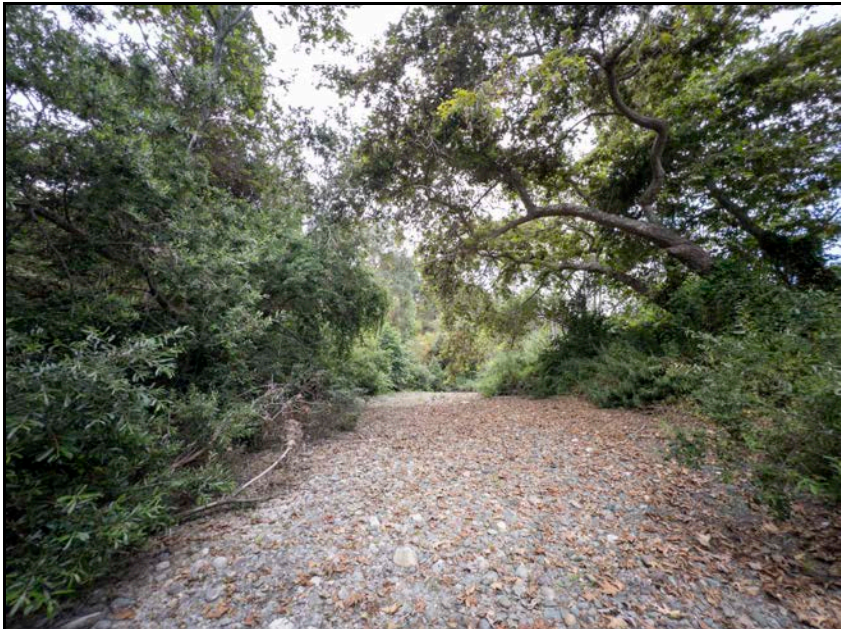
CCSD Monitoring August 4, 2022



Site 3



Site 3



Site 3



Site 3

CCSD Monitoring August 4, 2022



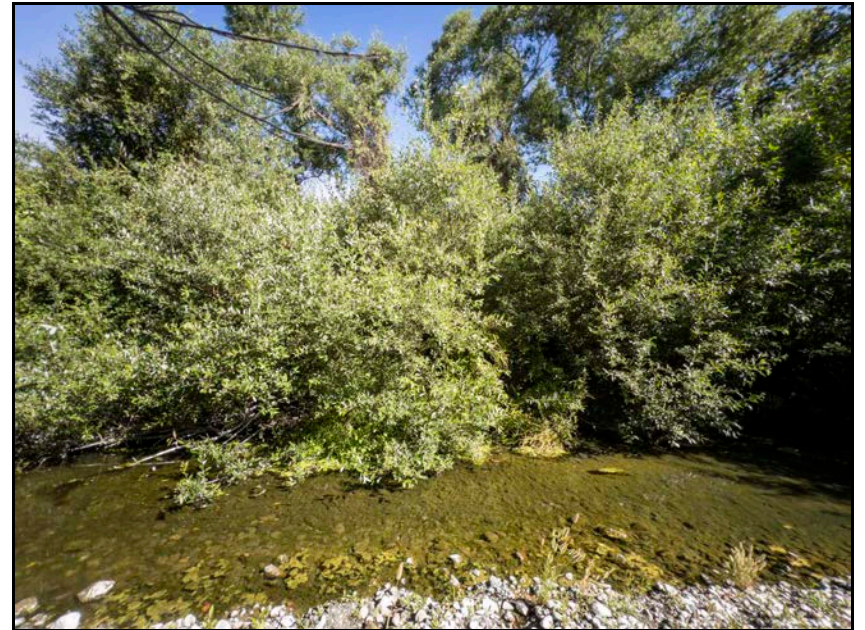
Site 4



Site 4



Site 4



Site 4

CCSD Monitoring August 4, 2022



Site 5



Site 5



Site 5



Site 5

CCSD Monitoring August 4, 2022



Site 7



Site 7



Site 7



Site 7

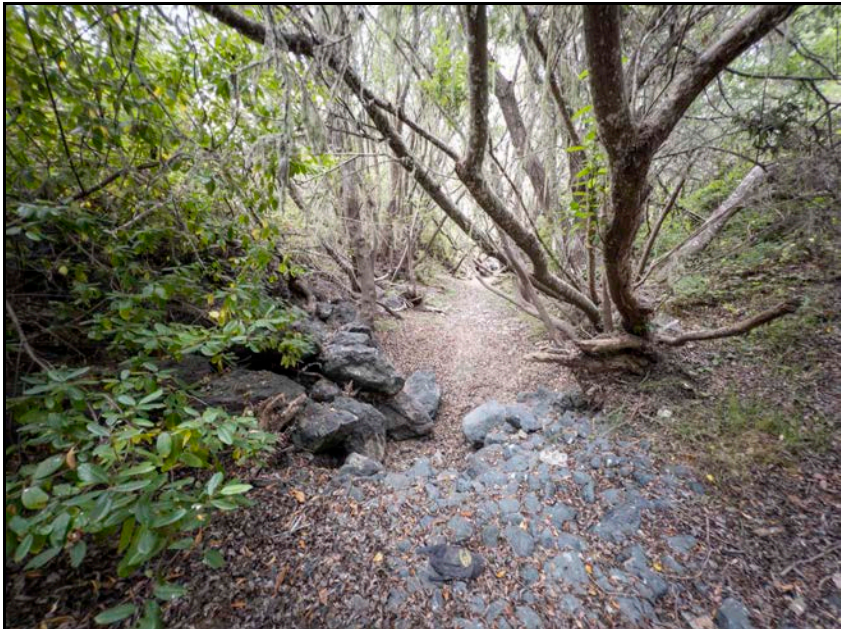
CCSD Monitoring August 4, 2022



Site 8



Site 8



Site 8



Site 8

CCSD Monitoring August 4, 2022



9P7 Well

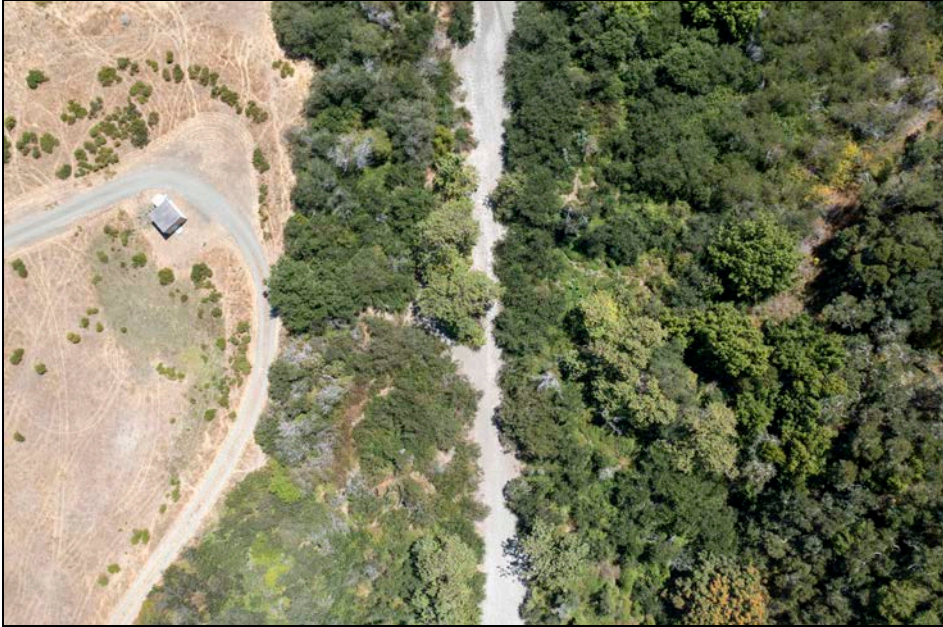


Walking Bridge PS-1



Estuary PS-2

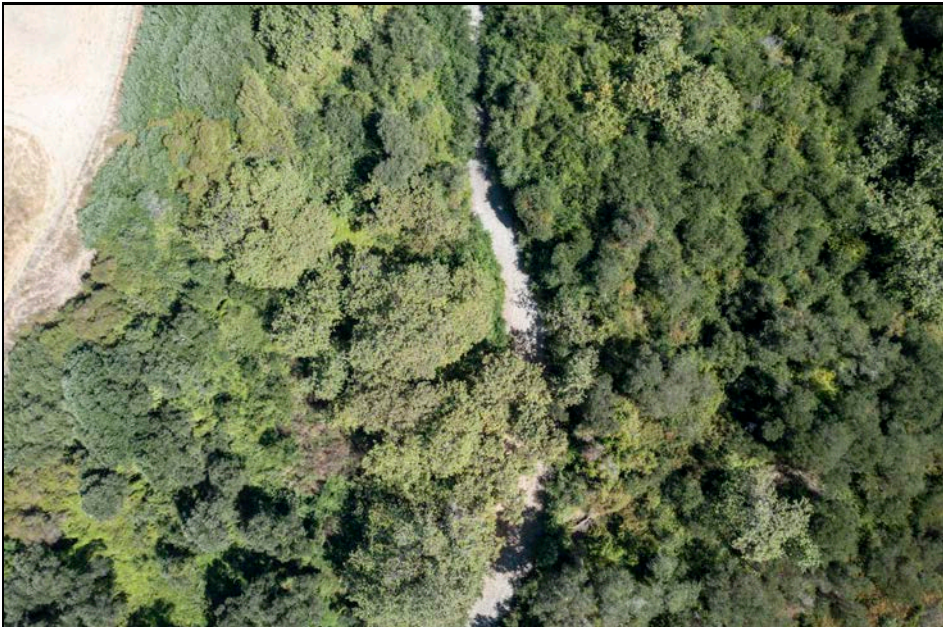
CCSD Monitoring August 4, 2022



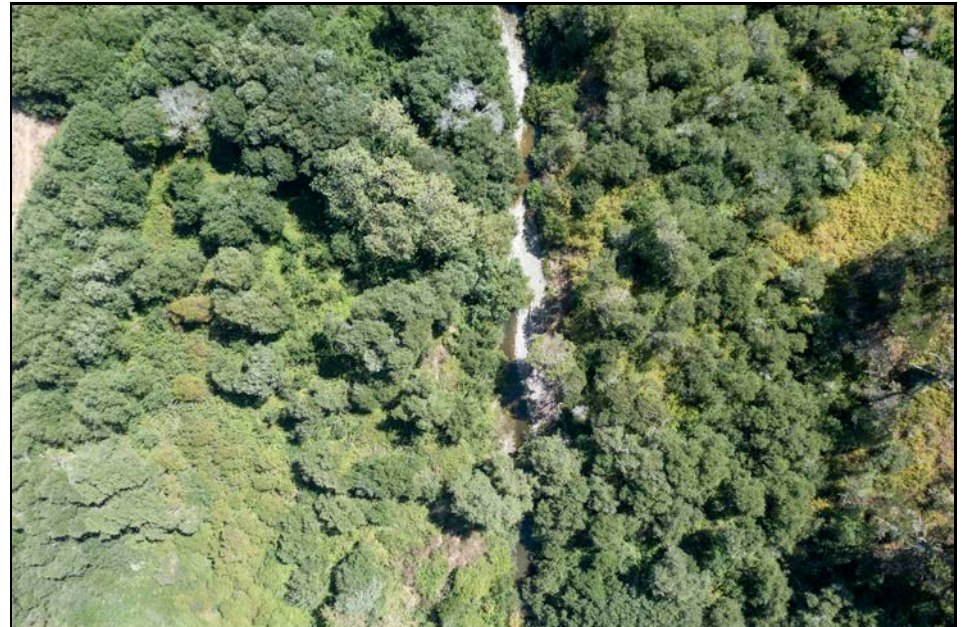
Site 1 Aerial



Site 2 Aerial

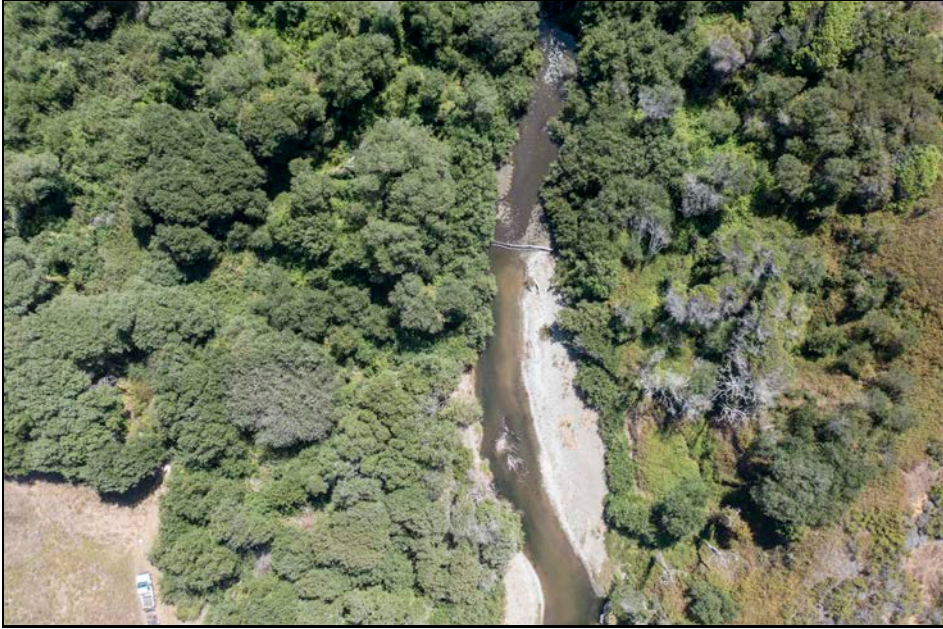


Site 3 Aerial



Site 4 Aerial

CCSD Monitoring August 4, 2022



Site 5 Aerial

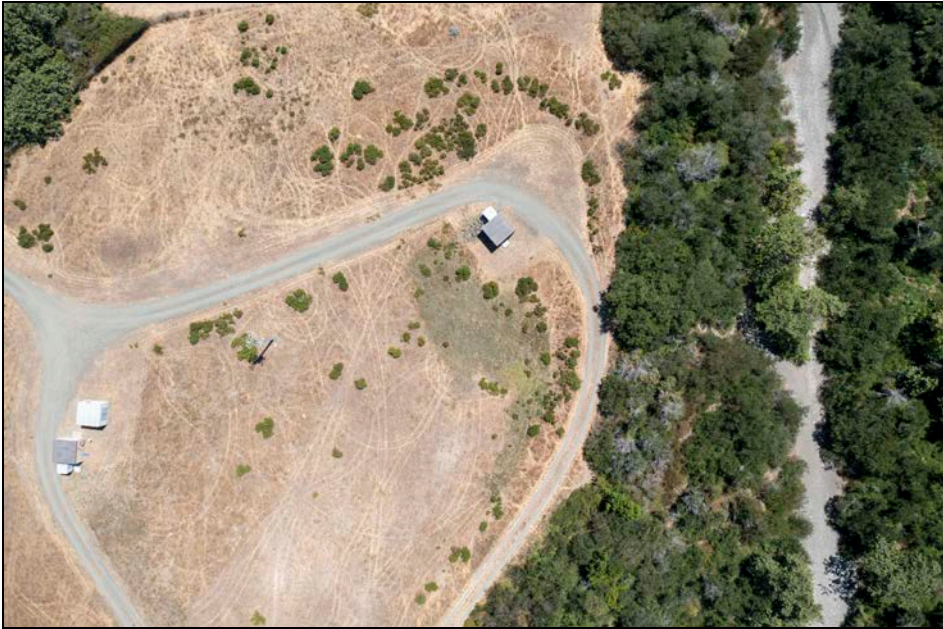


Site 7 Aerial



Site 8 Aerial

CCSD Monitoring August 4, 2022



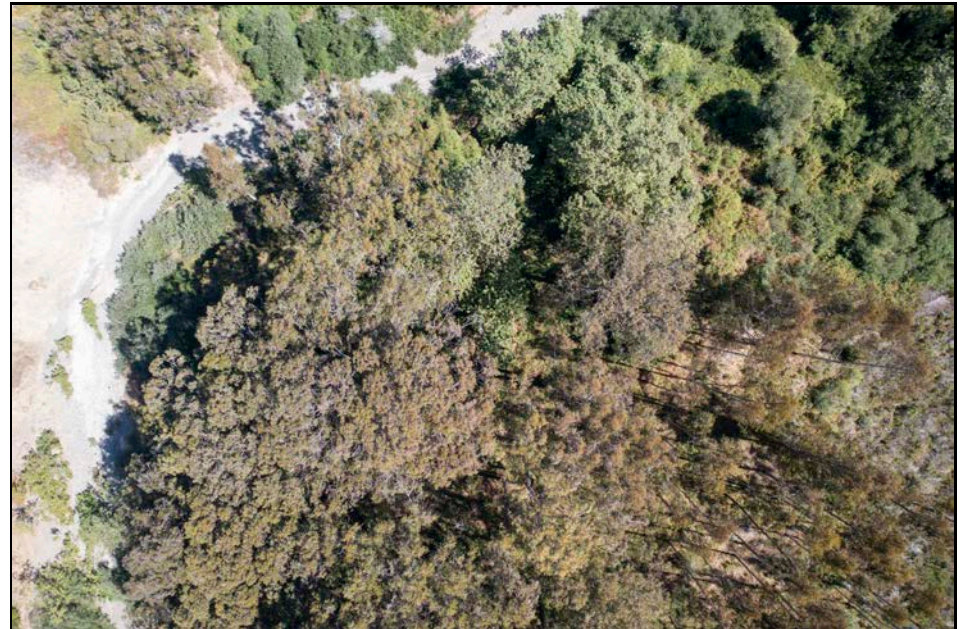
Site 1 Riparian Left



Site 1 Riparian Right



Site 2 Riparian Left



Site 2 Riparian Right

CCSD Monitoring August 4, 2022



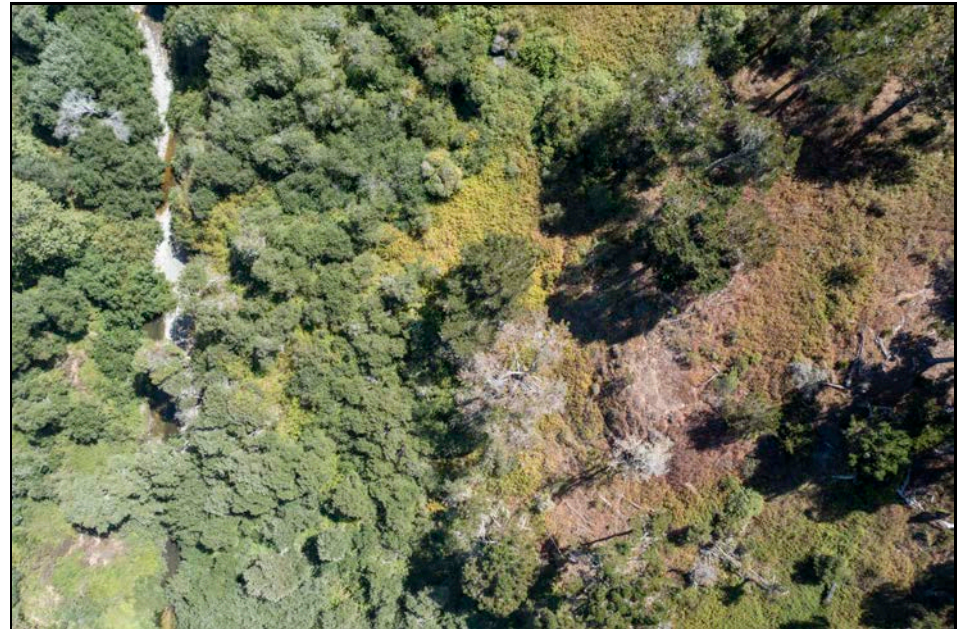
Site 3 Riparian Left



Site 3 Riparian Right



Site 4 Riparian Left



Site 4 Riparian Right

CCSD Monitoring August 4, 2022



Site 5 Riparian Left



Site 5 Riparian Right

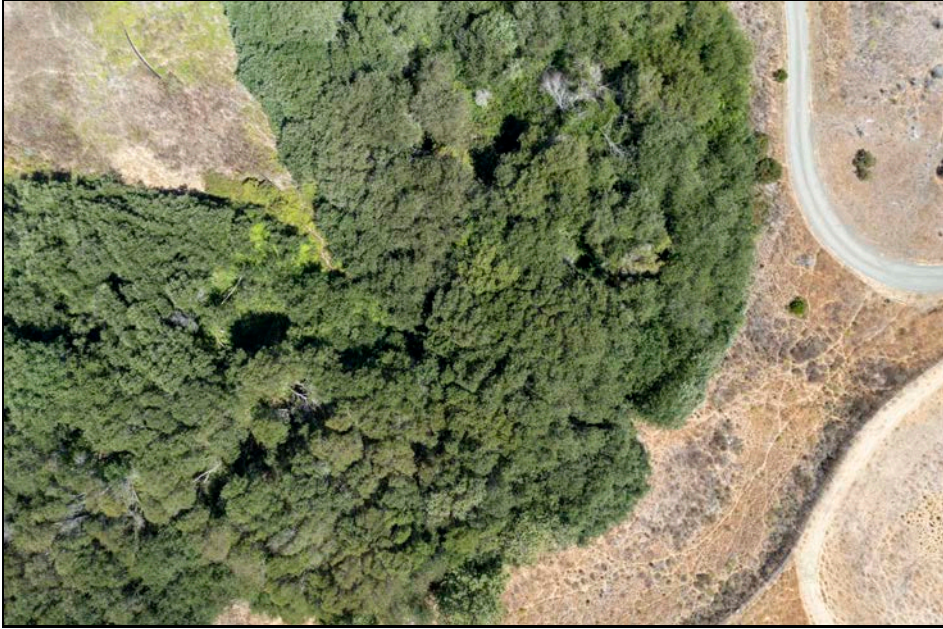


Site 7 Riparian Left



Site 7 Riparian Right

CCSD Monitoring August 4, 2022



Site 8 Riparian Left & Right